

DEVELOP 10 TIMES FASTER

64-bit Windows - 32-bit Windows - Linux - Mac - iOS - Android - Windows CE, Mobile - Windows Phone - .Net - Java - PHP - HyperFileSQL - Oracle - SQL Server - MySQL - DB2 - Informix - ...

918

NEW FEATURES

118 common new features

- Windows 8
- HyperFileSQL Android
- Secure FTP
- Surface chart
- rOLAP (pivot table)
- New Timeline control
- HTML printing
- CSS3
- Multi-site replication
- 88 new WLanguage functions
- 128 new iOS functions
- 58 new Android functions
- 18 new Java functions
- 38 new PHP functions
- 78 new Linux functions
- ...

www.windev.com



DEVELOP 10 TIMES FASTER



18

This new version brings new features to your teams that will make them even more efficient in our constantly evolving world.

New controls, improvements, support for Windows 8 and its new interface are all part of the 918 new features found in version 18.

Include features useful to your applications via a **simple re-compile**: this is the first benefit provided by version 18.

By switching to version 18, your applications **gain** new features, speed and quality and support recent technology evolutions.

WINDEV and WEBDEV are your work tools.

Thanks to you, your work tool is more efficient, more robust and faster.

The constant objective for our team is clear: your satisfaction and your success, on all the environments.

We are proud to introduce version 18 to you: a major version.

ORDER VERSION 18 TODAY!

918
NEW FEATURES



Documentation. **New features.** This document is intended for readers who are already familiar with version 17 of WINDEV, WEBDEV and WINDEV Mobile. If you're not familiar with them, don't hesitate to request their complete documentation (free).

Legend
In yellow background boxes, our experts draw your attention to special features.
WD WB WM: the legend shows in which product the new feature is available.



COMMON FEATURES

WINDEV. WEBDEV. WINDEV Mobile.

WINDOWS 8



002 new feature WD WB WM

WINDOWS 8: DESKTOP PC

WINDEV 18 lets you create applications for both types of interfaces. The code, windows, data model ... are compatible. See the details in new features #610 to #860.



Application using the new interface
Benefit provided by this version 18 new feature: Application portability, preserved team competency.

001 new feature WD WB WM

WINDOWS 8: OVERVIEW

Of course, WINDEV 18 supports Windows 8. The main new feature of Windows 8 is the presence of 2 distinct interfaces in the operating system. The first interface is the one we're used to under Windows, the "Desktop" interface. The new Windows 8 interface is intended for both PC and touch-based hardware (tablets, phones). The start menu of this new interface is based on tiles.

Benefit provided by this version 18 new feature: WINDEV18 supports all the Windows versions.



Native support for Windows 8 in the 2 types of interfaces is a key benefit of version 18: your applications are compatible.



WINDOWS 8 : TABLETS

WINDEV Mobile18 lets you create applications for tablets running Windows 8. On the processor side, the 2 types of processor (x86 and Arm) are of course supported by WINDEV Mobile.



Tablet running Windows 8

Benefit provided by this version 18 new feature:
Portability of your applications.

WINDOWS 8: SMARTPHONES

For smartphones, the OS is slightly different and is named Windows Phone 8. WINDEV Mobile 18 lets you create applications for smartphones running Windows Phone 8.



Benefit provided by this version 18 new feature:
Portability of your applications.

Version 18 ensures compatibility with all the Windows versions: Windows 8, Windows Server 2012, but also Windows 7, Vista, XP, 2008, in 32 and 64-bit.
Your teams use the same language (no APIs to load), the same windows, reports, ...
As for mobile versions, version 18 is compatible with Windows RT, Windows Phone, Windows Mobile, CE, ...
And of course, your code is also compatible with Linux, Mac, Android, iOS (iPhone, iPad)...

NEW CONTROLS

NEW PIVOT TABLE CONTROL: DECISION MAKERS LOVE IT

The Pivot Table control dynamically displays data coming from the aggregation of different files found in a database. For example: the volume of sales according to product families, products, regions, over time, with or without details. Everything, absolutely everything, is displayed dynamically, including row and column headers. The pivot table performs the calculation. All the results are automatically calculated. This pivot table control is also called ROLAP. ROLAP is the acronym for Relational OLAP. OLAP is itself the acronym for On-Line Analytical Processing. This is an extremely powerful control.

Benefit provided by this version 18 new feature:
Weeks of programming are avoided thanks to this new version 18 control!

PIVOT TABLE CONTROL: HOW TO DEFINE IT?

Defining a pivot table control is very simple with WINDEV 18: simply answer the wizard's questions.



The control definition is done in three steps: content (1), column headers (2), row headers (3)

THE NEW "PIVOT TABLE" CONTROL IN SUPPORT OF ANALYTIC DECISION MAKING

Dynamic: the list of countries comes from data files

The table is automatically filtered on the country

The headers can be expanded

Dynamic: the headers come from data files

Sum, mean, count, WLanguage function...
Several possible calculations

Country : France	Products	Period				2011	2012	Total
		1st trimester	2nd trimester	3rd trimester	4th trimester			
	eBooks	\$11 401 020 Qty : 250 051	\$18 985 617 Qty : 285 029	\$15 746 638 Qty : 255 883	\$14 984 142 Qty : 241 325	\$13 236 757 Qty : 226 729	\$13 225 798 Qty : 225 817	\$87 579 972 Qty : 1 484 834
	Books	\$16 512 800 Qty : 320 051	\$15 974 741 Qty : 315 038	\$15 446 54 Qty : 315 810	\$16 249 210 Qty : 330 211	\$14 286 321 Qty : 286 582	\$14 154 123 Qty : 286 582	\$92 623 742 Qty : 1 823 830
	Paper books	\$26 432 074 Qty : 512 890	\$24 287 453 Qty : 489 031	\$23 747 988 Qty : 412 700	\$22 018 055 Qty : 408 214	\$23 745 963 Qty : 410 520	\$23 843 710 Qty : 389 541	\$144 075 243 Qty : 2 622 896
	High-Tech	\$35 471 615 Qty : 198 003	\$27 859 634 Qty : 185 209	\$29 451 102 Qty : 120 817	\$28 014 999 Qty : 118 820	\$32 320 984 Qty : 156 729	\$28 141 123 Qty : 103 145	\$179 259 457 Qty : 882 723
	Sports and Leisure	\$9 503 178 Qty : 120 020	\$10 214 987 Qty : 285 028	\$11 124 832 Qty : 315 883	\$10 187 210 Qty : 298 012	\$8 129 823 Qty : 286 729	\$7 217 104 Qty : 175 758	\$56 377 134 Qty : 1 143 430
	Games	\$56 954 850 Qty : 812 015	\$51 875 327 Qty : 785 011	\$50 871 039 Qty : 775 712	\$49 012 444 Qty : 721 543	\$49 238 981 Qty : 699 541	\$49 238 981 Qty : 689 123	\$30 113 622 Qty : 482 945
	Music & DVD	\$34 123 198 Qty : 513 052	\$29 875 602 Qty : 465 027	\$31 954 214 Qty : 315 883	\$31 987 871 Qty : 310 140	\$30 017 985 Qty : 286 757	\$29 234 657 Qty : 252 984	\$187 93 527 Qty : 2 143 843
	Jewellery	\$19 421 144 Qty : 90 051	\$18 987 325 Qty : 84 029	\$18 786 147 Qty : 86 541	\$19 120 014 Qty : 88 014	\$18 951 051 Qty : 75 721	\$17 231 879 Qty : 68 012	\$112 97 560 Qty : 492 495
	Kitchen & House	\$65 867 602 Qty : 482 911	\$64 875 621 Qty : 475 214	\$59 526 749 Qty : 478 880	\$58 140 798 Qty : 471 741	\$63 146 847 Qty : 546 774	\$62 517 944 Qty : 512 417	\$374 75 561 Qty : 2 967 937
	Total	\$275 687 481 Qty : 3 299 044	\$262 936 307 Qty : 3 368 616	\$256 655 256 Qty : 3 078 109	\$249 714 714 Qty : 2 988 109	\$253 074 712 Qty : 2 976 082	\$242 805 319 Qty : 2 672 935	

Dynamic: the headers come from data files

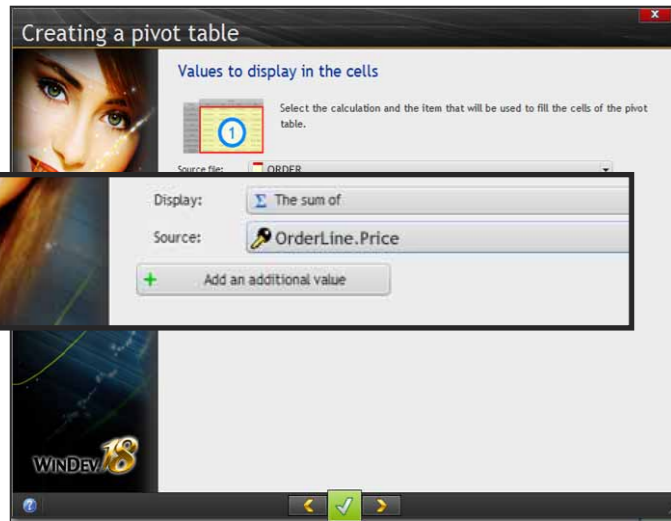
Total or mean, ...
Automatically calculated

Dynamic: the data is automatically calculated

The headers can be expanded

The first step consists in defining the main content for the table. The dynamic row and column headers will be defined in the next 2 steps.

The table's content is defined by one or more calculations to perform on one or more items, and/or by WLanguage code. For example the content of the table for displaying sales revenues can be: sum of the order lines. Another example can be: sum of the quantity sold. Several calculations can be displayed in the same cell. For example a cell can display both the sales revenues and the quantity sold.

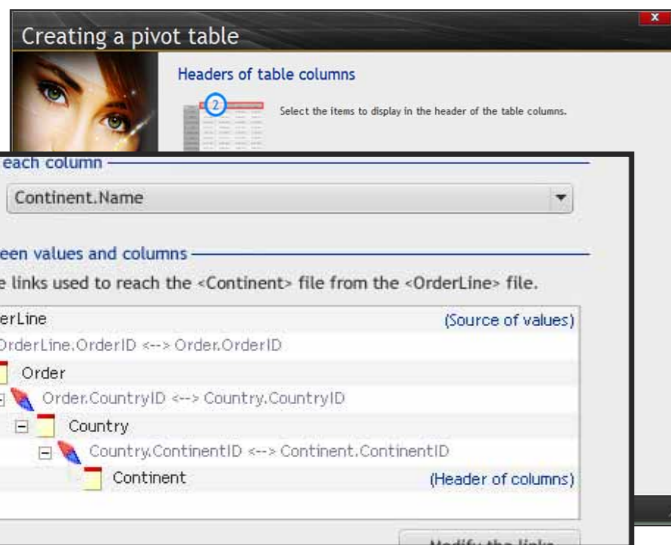


First step: content in the "center" of the table

The second step consists in defining the data file item used to create the column headers.

For example the order date, to display its year. A date can then be shown by semester, trimester, quarters, months, weeks...

You can define several header levels. For example, for each of the years displayed, you can display a list of continents, then a list of countries.



The column headers

The third step consists in defining the data file items to read for creating the row headers. There too, you can define some levels of details.



Row headers

A total of rows and/or columns, as well as an average or a count, can be automatically added. Like any control, the pivot table control benefits from the "7-tab" technology.

You can also create the control directly from the 7-tab.

Benefit provided by this version 18 new feature: Implementing a pivot table (rOLAP) is simple.

007 new feature W D W B W M

PIVOT TABLE CONTROL: AUTOMATIC FILL

Filling the table is very simple: It is automatic! The WINDEV 18 rOLAP engine automatically reads the data and performs the necessary calculations for all the possible levels of details. It automatically fills the row and column headers.

Benefit provided by this version 18 new feature: Programming a rOLAP cube is easy

008 new feature W D W B W M

PIVOT TABLE CONTROL: AT RUN TIME

The calculations of the pivot table control is started by the `PVTCalculateAll` function. The end user can choose at any time the level of details for the data displayed. The displayed result can be exported like any WINDEV table: Excel, Word, PDF, email,... Let's illustrate run time results with 4 examples:

Example 1

Products	Period			
	2012	2011	2010	2009
Books	\$14 707 315	\$24 491 446	\$20 313 163	\$17 076 416
High-Tech	\$21 301 512	\$20 607 416	\$19 926 046	\$18 429 354
Sports and Leisure	\$34 097 375	\$31 330 814	\$30 634 905	\$30 632 292
Games	\$45 758 383	\$35 938 928	\$37 991 922	\$41 694 069
Music and DVD	\$12 259 100	\$13 177 333	\$14 351 033	\$10 487 472
Jewellery	\$73 471 756	\$66 919 172	\$65 623 640	\$63 518 285
Kitchen and House	\$44 018 925	\$38 539 527	\$41 220 936	\$38 723 201
Beauty and Health	\$25 053 276	\$24 493 649	\$24 234 130	\$24 446 856

A basic pivot table control

Example 2

Products	2010				
	1st trimester	2nd trimester	3rd trimester	4th trimester	Year total
eBooks	\$11 401 020	\$18 985 617	\$15 746 638	\$14 984 142	\$13 236 757
Audio Books	\$16 512 800	\$15 974 741	\$15 446 54	\$16 249 210	\$14 286 321
Paper books	\$26 432 074	\$24 287 453	\$23 747 988	\$22 018 055	\$23 745 963
High-Tech	\$35 471 615	\$27 859 634	\$29 451 102	\$28 014 999	\$32 320 984

In this pivot table, the end user has expanded the details for the year 2010 in quarters format.

The months of the quarter can be expanded as well (+ button)

Example 3

Products	Period			
	2012	2011	2010	2009
eBooks	\$11 401 020	\$18 985 617	\$15 746 638	\$14 984 142
Books	\$21 301 512	\$20 607 416	\$19 926 046	\$18 429 354
Paper books	\$34 097 375	\$31 330 814	\$30 634 905	\$30 632 292
High-Tech	\$45 758 383	\$35 938 928	\$37 991 922	\$41 694 069
Sports and Leisure	\$12 259 100	\$13 177 333	\$14 351 033	\$10 487 472
Games	\$73 471 756	\$66 919 172	\$65 623 640	\$63 518 285
Music & DVD	\$44 018 925	\$38 539 527	\$41 220 936	\$38 723 201
Jewellery	\$25 053 276	\$24 493 649	\$24 234 130	\$24 446 856
Kitchen and House	\$84 969 207	\$83 689 551	\$76 789 506	\$81 459 433

This pivot table contains an additional dimension: the country, which automatically filters the table.

The end user has expanded the details of the "Books" product family

Example 4

Products	Geographical area	Period			
		2012	2011	2010	2009
Books	America	\$20 313 163	\$17 076 416	\$24 491 446	\$14 707 315
	Europe	\$19 926 046	\$18 429 354	\$20 607 416	\$21 301 512
High-Tech	Europe	\$30 634 905	\$30 632 292	\$31 330 814	\$34 097 375
	Asia	\$7 991 922	\$41 694 069	\$35 938 928	\$45 758 383
Sports and Leisure	America	\$14 351 033	\$10 487 472	\$13 177 333	\$12 259 100
	Europe	\$65 623 640	\$63 518 285	\$66 919 172	\$73 471 756
Games	America	\$41 220 936	\$38 723 201	\$38 539 527	\$44 018 925
	Europe	\$24 234 130	\$24 446 856	\$24 493 649	\$25 053 276
Jewellery	Europe	\$76 789 506	\$81 459 433	\$83 689 551	\$84 969 207
	Asia	\$84 969 207	\$83 689 551	\$76 789 506	\$81 459 433

In this pivot table the sales revenues for each product family is detailed by continent. If the end user expands the continent (by clicking "+"), each country will be displayed

Benefit provided by this version 18 new feature: Browsing through the data, changing axes, is very simple for the end user, who can easily analyze a ton of numbers.

009 new feature W D W B W M

PIVOT TABLE CONTROL: PERSISTENCE OF THE RESULT

The execution's result can be stored, and then reloaded later, without having to re-read the data files (`PVTSave` and `PVTLoad` functions). This allows you to avoid recalculating the entire cube for data that won't change anymore, such as last year sales figures for instance.

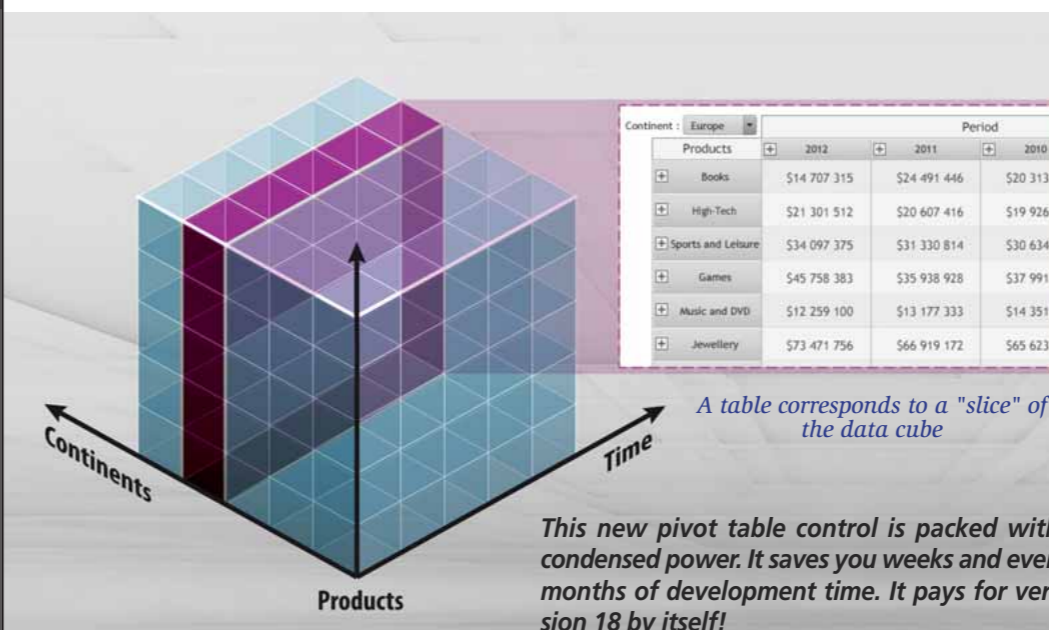
You can also reload a saved table, and update part of this table, such as the sales figures for the current year. This speeds up the display of the result.

Benefit provided by this version 18 new feature: Instant display of the results.

010 W D W B W M

THE CUBE IS FLAT!

Why is sometime a pivot table called a "cube"? It's because often it is used to view data in 3 dimensions. The visualized table corresponds then to a "slice" of the cube, knowing that all the slices based on all the axes can be visualized. Actually, the number of dimensions that a pivot table can handle is unlimited.



A table corresponds to a "slice" of the data cube

This new pivot table control is packed with condensed power. It saves you weeks and even months of development time. It pays for version 18 by itself!



NEW TIMELINE CONTROL

The Timeline control is used to represent the chronology of close events, which can happen in parallel.

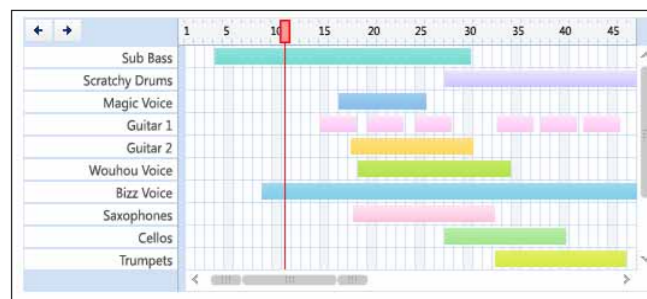
This control is used for example to:

- create a video montage
- represent elements on an automate
- build an animation
- ...

The granularity can be up to the micro second.

The scale of the displayed timeline can be modified by the end user through a slider.

The marker can be moved with the mouse or by programming.



The new Timeline control

Benefit provided by this version 18 new feature:
Easily represent timelines.

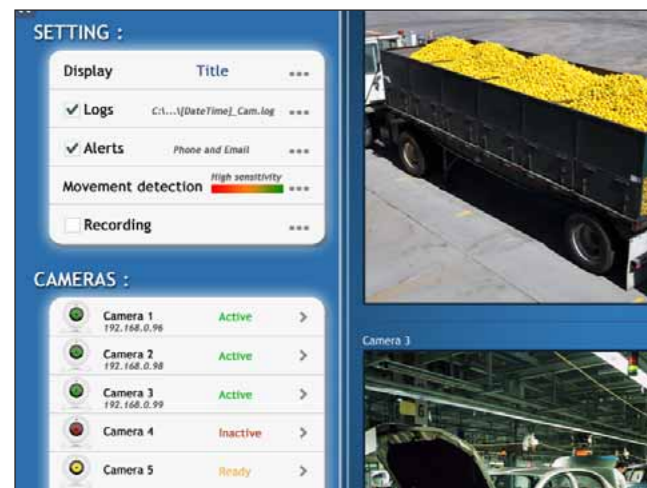
NEW MULTILINE ZONE CONTROL

This new WINDEV control type is a multiline control.

It allows you to place controls of different types on each line.

This allows you to customize each line, for example by offering a check box on a line to change the status, a progress bar on another line, etc.

By programming, you can add several occurrences of a same type of line.



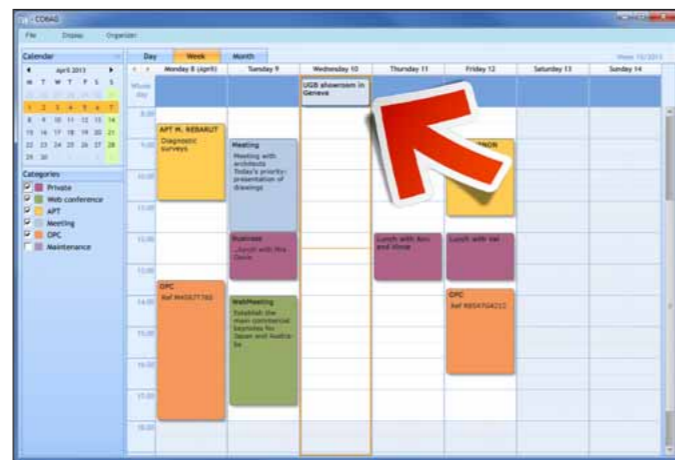
Benefit provided by this version 18 new feature:
Even more advanced customized interfaces.

ORGANIZER CONTROL: ALL DAY MEETING

In version 18, in addition to all the already-offered granularity, you can now define an all day meeting.

The meeting's representation is more intuitive for the end user.

This feature is also available for the scheduler control.



Wednesday, an all-day meeting!

Benefit provided by this version 18 new feature:
Better representation of organizer and scheduler controls.

CHART CONTROL

NEW "SURFACE" CHART CONTROL

A new type of chart is being introduced in version 18: the surface chart.

A Surface chart is used to represent correlated analogical data, according to 3 axes.

For example, represent the resistance of a material according to pressure and temperature.

Another example, for an engine, represent the opening time of the injectors according to the volume of incoming air and engine throttle.

Of course, the surface chart also lets you represent a mathematical function in 3 dimensions.

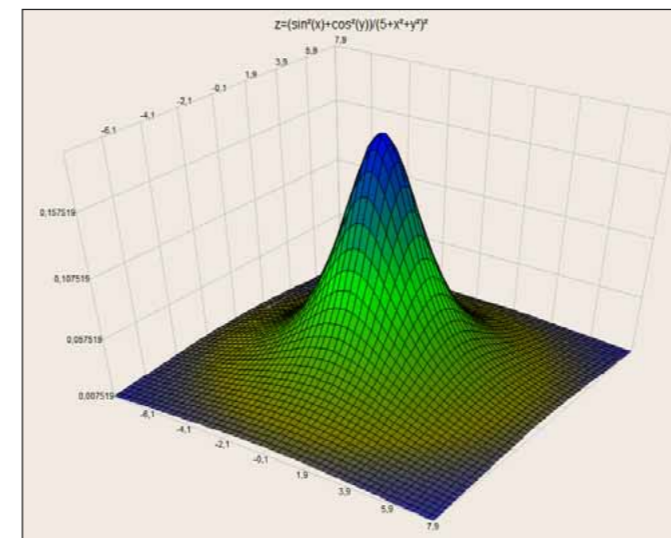
The surface chart is filled by specifying the known points (X, Y, Z) of the chart using the `grSurfaceAddData` function;

The functionalities of the surface chart control are sophisticated:

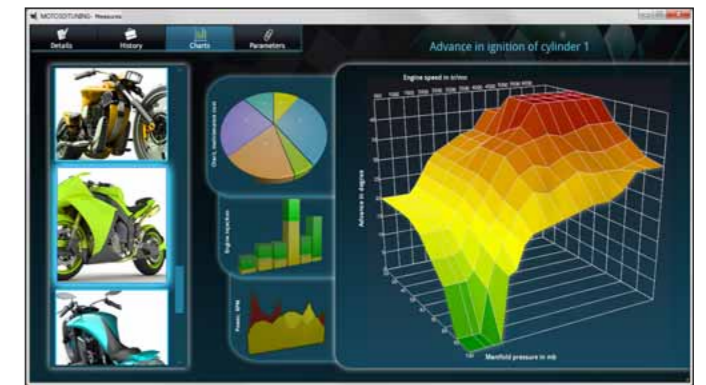
- the control extrapolate the value that are not provided;
- you can display a mesh or not;
- the color can be specified by the Z axis: the color gradient is automatically calculated;
- the visualization axis can be modified;

- grids can be displayed or not on each of the 3 axis planes;
- the axes can be orthonormal (or not);
- ...

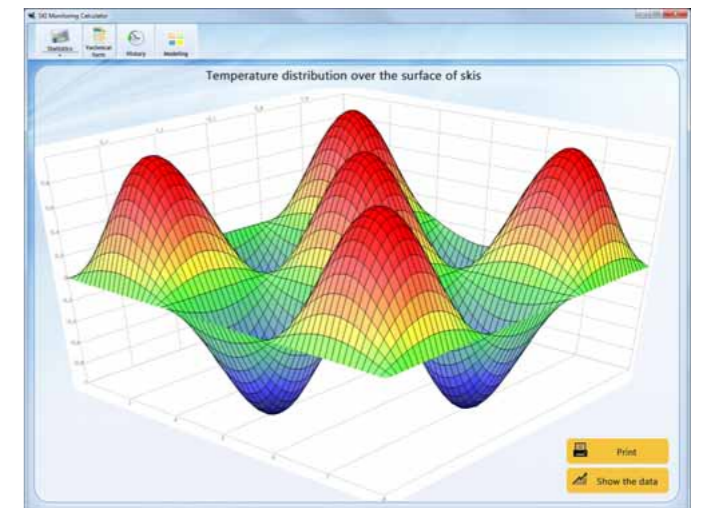
The end user can turn the chart with the mouse (this option can be disabled).



The Surface chart offers spectacular display



A Surface chart included in a window



Other spectacular display...

Benefit provided by this version 18 new feature:
New ability to synthesize data and assist decision makers.

FULLY COMPATIBLE WITH EARLIER VERSIONS



WINDEV 18 respects your existing assets.

No migration is needed between WINDEV 7.5, 8, 9, 10, 11, 12, 14, 15, 16 or 17 and WINDEV 18: all you have to do is recompile the application for it to work in version 18.

It is the same for switching from WEBDEV 7, 9, 10, 11, 12, 14, 15, 16 or 17 to WEBDEV 18. Simply recompile.

Existing components (version 8, 9, 10, 11, 12, 14, 15, 16 or 17) work directly (without the need to recompile) with applications in version 18.

Version 18 directly opens a project in version 7.5, 8, 9, 10, 11, 12, 14, 15, 16 or 17. The older projects (5.5, ...) must be migrated.

And of course, different versions of your environments can coexist on your PC; a version 18 license can also run older versions (17, 16, 15, 14, 12, 11, 10, 9, 8, 7.5, 5.5...).

Version 18 is of course compatible with Windows 8.

IPHONE, IPAD

015 new feature W D W B W M

88 EVOLUTIONS FOR IOS

As you know, WINDEV Mobile version 18 lets you create applications for iPhone and iPad.

This version 18 is packed with new features: the environment's new features, of course, but also dozens of new features for the WLanguage controls.

See all these new features starting on page 43.

Benefit provided by this version 18 new feature:

Easily develop rich apps for iPhone or iPad, reusing your existing code.

ANDROID

016 new feature W D W B W M

188 NEW EVOLUTIONS FOR ANDROID

Android is used more and more often on mobile devices. WINDEV Mobile allows you, of course, to create applications for Android, and it also evolves tremendously in version 18. The environment of course, but also over a dozen new features for controls, the language, HyperFileSQL, ... See these new features starting from #512.

Benefit provided by this version 18 new feature:

Easily develop sophisticated apps for Android, reusing your existing code.

WINDOWS PHONE 8

017 new feature W D W B W M

ASSURED COMPATIBILITY

To take advantage of the new graphic interface for Windows 8, simply create or adapt your applications using version 18 of WINDEV Mobile.

Programming is still done using WLanguage, of course, windows are created as usual with the window editor...

See these new features starting from #610.

Benefit provided by this version 18 new feature:

Support for all the mobile environments of Windows.

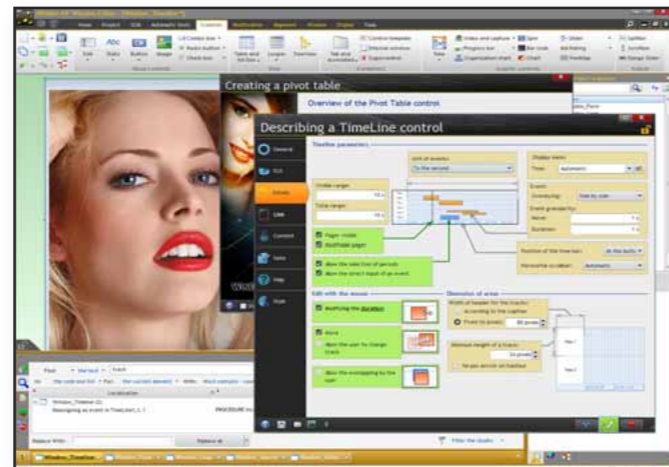
ENVIRONMENT

018 new feature W D W B W M

AN EVEN MORE EFFICIENT ENVIRONMENT

In version 18, the development environment evolves for a better ease of use and efficiency.

Among the main evolutions, the presence of a "ribbon" is the most significant: choices become clearer. Note that the presentation via pull-down menu is still available.



Benefit provided by this version 18 new feature:
More intuitive editors, team efficiency improved.

019 new feature W D W B W M

NEW "RIBBON" INTERFACE

In version 18, a Ribbon type interface is being introduced in the editors: This type of interface allows us to present more information over a reduced amount of space.

It makes it easier to see and predict the result of a choice.

With this interface, your developers easily discover all the editors' options. Options that were scattered before are now grouped together.

The interface for creating controls is more visual: the icons are larger, more visible, and grouped by themes.

When a control is selected, a context-sensitive edit pane specific to the control comes up. For example, hovering a type of control lets you instantly see the result of applying this style to the control in the window.

The ribbon adapts to the available space on the screen.

A search field is available at any time inside the ribbon and lets you find a specific option.

A "compatible with older version" mode displays the traditional menu.

Once you've tested the efficiency of the ribbon in version 18, you won't be able to do without!

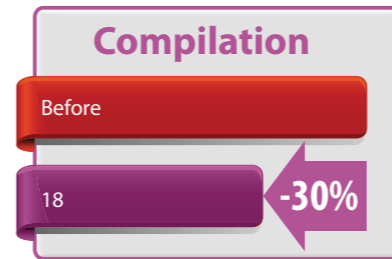
Benefit provided by this version 18 new feature:

The various possible actions are grouped and easy to find.

020 new feature W D W B W M

FASTER COMPILATION: 30% IMPROVEMENT

In version 18, the compilation processes have been improved. The compilation and recompilation of applications is 30% faster on average.



Benefit provided by this version 18 new feature:
More time saved.

021 new feature W D W B W M

FASTER PROJECT OPENING 30% TO 80% IMPROVEMENT

The opening of large size projects is noticeably faster. The average gain for a project with a 1,000 elements is 38%. Improvements of up to 80% have even been recorded on very large projects. This gain is very noticeable for developers.

Opening projects



Benefit provided by this version 18 new feature:
Lots of time saved when opening projects.

022 new feature W D W B W M

PROJECT MONITORING CENTER

The Project Monitoring Center evolves in version 18. The display speed for the requirement lists is optimized. The visualization of the schedule has been improved: navigation is easier, printing is easy.

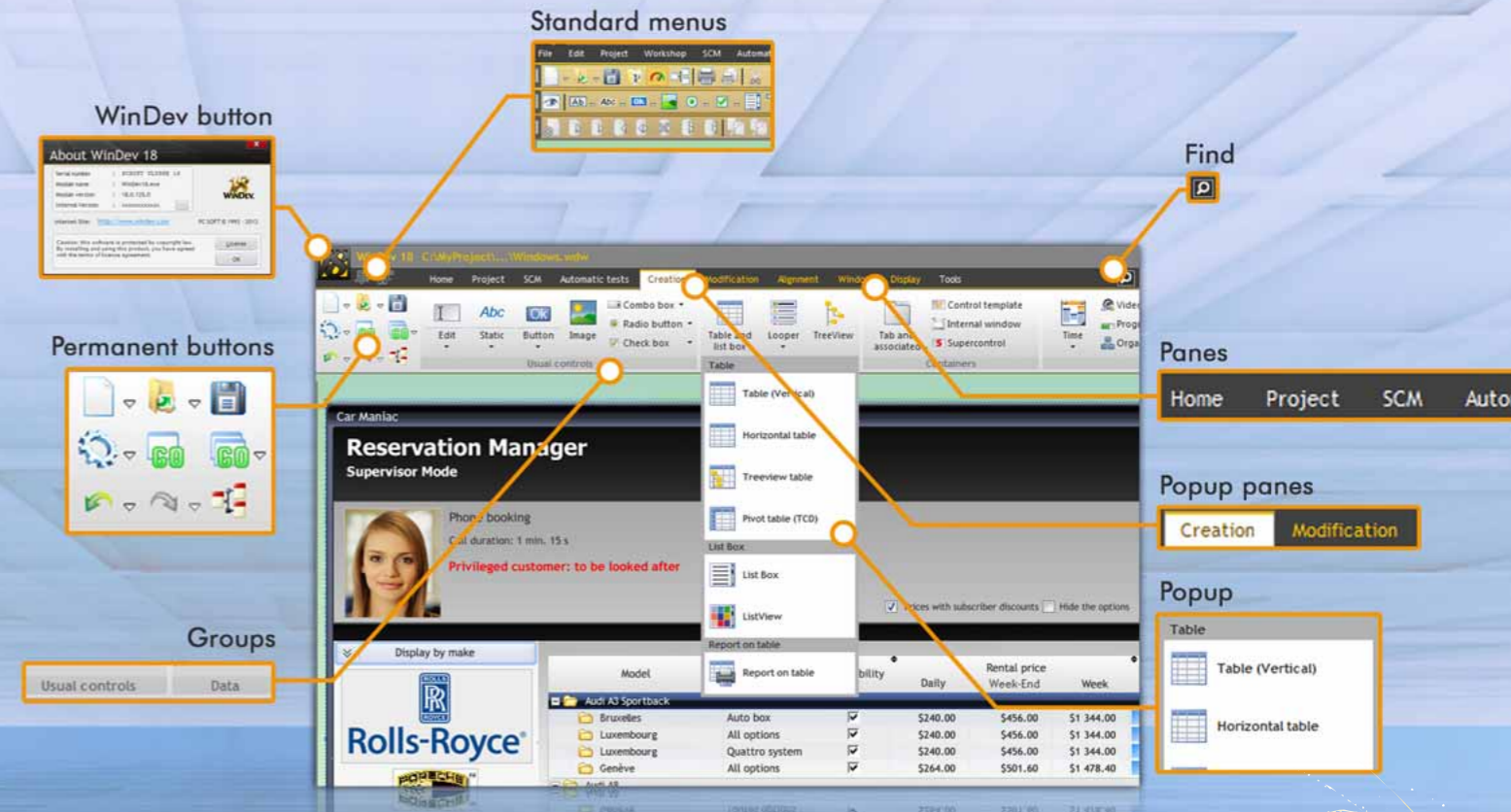
Benefit provided by this version 18 new feature:
Time savings for large projects.

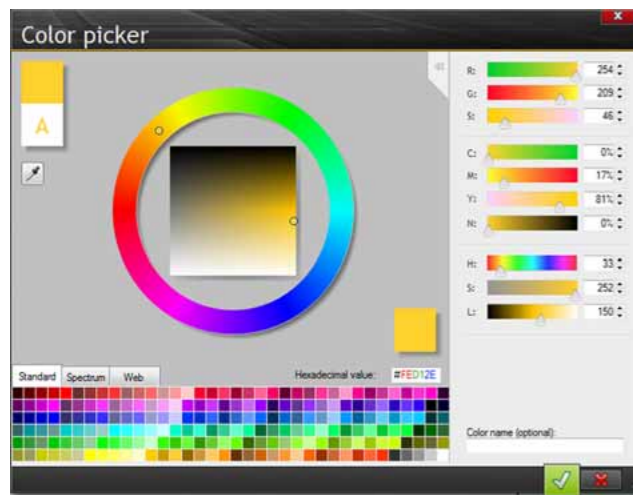
023 new feature W D W B W M

NEW COLOR SELECTOR: MORE PRECISE

The color selector for all the editors evolves in version 18. Its new interface makes it easier to define colors. There are also more colors visualized.

THE RIBBON IN THE EDITORS: EXTREMELY INTUITIVE





Benefit provided by this version 18 new feature:
Increased visual choices for selecting colors.

024 new feature WD WB WM

PROJECT HIERARCHICAL TREEVIEW

The analysis's items can now be displayed in logical order. A new project explorer display option lets you sort the elements by "last modified" date.

Benefit provided by this version 18 new feature:
Information easier to find in the project explorer.

025 new feature WD WB WM

DISPLAY OF CLASSES AND SETS OF PROCEDURE

The project explorer offers new sort options for classes and sets of procedures.

- Now you can sort:
- by last modified date
 - by alphabetical order
 - by color
 - by visibility (public, protected, private)

Benefit provided by this version 18 new feature:
Synthetic view.



026 new feature WD WB WM

DISPLAY THE BASE CLASS METHODS

In OOP, when a class derives from one or more classes, you can now view all the inherited methods of this class. A simple right click lets you create a virtual method's redefinition. You can choose to display only the public methods and members. This simplifies the display of classes. This option can be disabled.

Benefit provided by this version 18 new feature:
Synthetic view of the handled class.

027 new feature WD WB WM

"DIFF" ON IMAGES

Especially useful in SCM, images "diff" lets you view the difference between 2 versions of an image, icon, button...



The button lost its rounded corners between the 2 versions...

Benefit provided by this version 18 new feature:
It becomes easy to view the differences between 2 versions of a same image.

028 new feature WD WB WM

USE GOOGLE TRANSLATION IN THE EDITORS

As you know, WINDEV and WEBDEV let you support up to 64 languages in the same project: window, report, WLanguage... The translation of the different languages can be performed afterwards by using WDMMSG or in the editors directly. To simplify this translation, the editors offer to call "Google Translation" to perform these translations. Note: of course you must comply with the Google service usage rules, which are subject to change over time.

Benefit provided by this version 18 new feature:
Easier translation.

029 new feature WD WB WM

INTERNAL COMPONENT: ORGANIZED BY FOLDER

The visualization of an internal component's elements is now organized in a tree fashion: windows, reports, pages, ...

Benefit provided by this version 18 new feature:
Files are presented in a hierarchical way.

030 new feature WD WB WM

ADDITION OR DELETION OF A LANGUAGE: INSTANT SYNCHRONIZATION

For multilingual projects, when a language is deleted from the project, version 18 removes all the references to the deleted language in all the project's elements. This way the project is kept clean. When adding a language, this is done immediately and not just when each element is opened.

Benefit provided by this version 18 new feature:
Saves you from tedious operations.

031 new feature WD WB WM

IMAGE CATALOG: TRANSPARENCY LEVEL

The images and illustrations available from the clipart catalog now support a level of transparency (alpha layer). When an image is selected, a transparency percentage can be specified.

Benefit provided by this version 18 new feature:
Image sophistication.

EDITORS: 18 NEW SEARCH FEATURES



The editors' search feature is an important component contributing to your team's efficiency. Its user friendliness and efficiency are of primary importance.

A search feature is available in the code, window, page and report editors. Here's the list of the 18 improvements and evolutions made to the search feature in version 18.

032 new feature WD WB WM

SEARCH #1: REVAMPED SEARCH INTERFACE

The search window has evolved and is now even more user friendly. The entry of search criteria is intuitive.

Benefit provided by this version 18 new feature:
Ease of use.

033 new feature WD WB WM

SEARCH #2: JOKER (?) AND WILDCARDS (*)

You can now use Joker characters in your searches. The "?" character replace any other character in the place where it is used.

For example "Loui?" finds both "Louis" and "Louix". Or for instance, "mydll1?04" finds "mydll1204", "mydll1304", "mydll1404", etc.

Several joker characters (?) can be used in the same search. The "*" character can replace one or more characters. "Loui*" finds "Louis", "Louix", and "Louise" and "Louissette" for instance.

The joker character can be used anywhere in a word.

Benefit provided by this version 18 new feature:
Saves you from tedious operations.

034 new feature WD WB WM

SEARCH #3: REGULAR EXPRESSIONS

Version 18 lets you use regular expressions as search criteria. For example, with an email address:

`.*([-a-z0-9]+)[@]([-a-z0-9]+)[.][a-z]{2,4}).*`



You can specify several groups: each group will be underlined in the result table.
The "replace" feature lets you replace the groups that were found.

Benefit provided by this version 18 new feature:
Search based on very very precise criteria.

035 new feature W D W B W M

SEARCH #4: SEARCH INSIDE THE HELP

The search inside the help is now included as part of the editors: directly in the editor, without leaving the editor you can start a search in the help.

Benefit provided by this version 18 new feature:
No need to exit the editor to find information in the help.

036 new feature W D W B W M

SEARCH #5: SEARCH BY AUTHOR

In version 18, you can search for the modifications performed by a specific author.

This criteria can be combined with a date criteria.
You can search for the elements created or modified by Mickael between July 1st and August 31st...



Search by author

Benefit provided by this version 18 new feature:
You know what's been modified, when and by whom!

037 new feature W D W B W M

SEARCH #6: SEARCH IN THE PROJECT

The search feature inside a project lets you find information such as text, images, names, ... used by the project.

For example, the search will happen within the executable generation parameters, component, libraries, ... (error message, icon for the executable, etc.) and also in the project's properties (project description).

Benefit provided by this version 18 new feature:
New search capabilities.

038 new feature W D W B W M

SEARCH #7: INCLUDE OR EXCLUDE COMMENTS

In the code editor, you can specify that the search will be performed only in the comments, or not in the comments at all. Each option can prove useful!

Benefit provided by this version 18 new feature:
Limit the number of results.

039 new feature W D W B W M

SEARCH #8: INCLUDE OR EXCLUDE CODE STRINGS

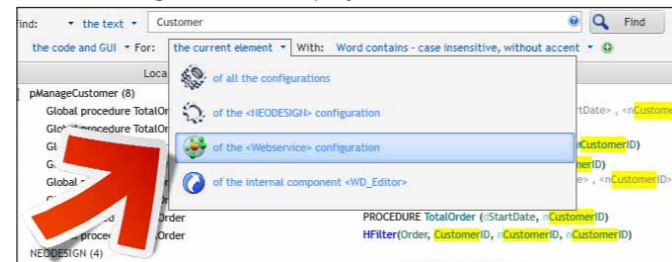
In the code editor, you can specify that the search will be performed only in the character strings found in the code, or you can exclude the code strings from the search.

Benefit provided by this version 18 new feature:
Limit the number of results.

040 new feature W D W B W M

SEARCH #9: SEARCH WITHIN A CONFIGURATION

A "configuration" is a type of project generation.
In version 18, a search can be limited to a specific configuration. The search can be performed, for instance, only within the "Linux" configuration of the project.



Search within a configuration

Benefit provided by this version 18 new feature:
Reduction of the number of operations in the editor.

041 new feature W D W B W M

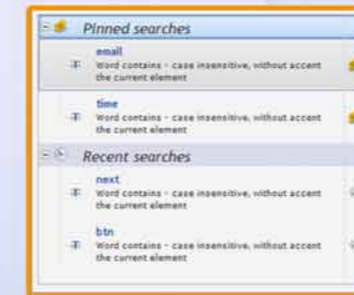
SEARCH #10: SEARCH LIMITED TO INTERNAL COMPONENTS

You can specify that the search will happen only in the elements found in internal components.

Benefit provided by this version 18 new feature:
The search will be performed in the internal components.

NEW SEARCH FEATURES SEARCHING? FIND IT!

Saving the criteria



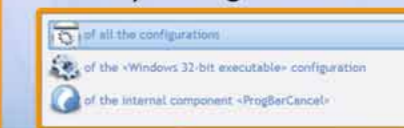
New search modes



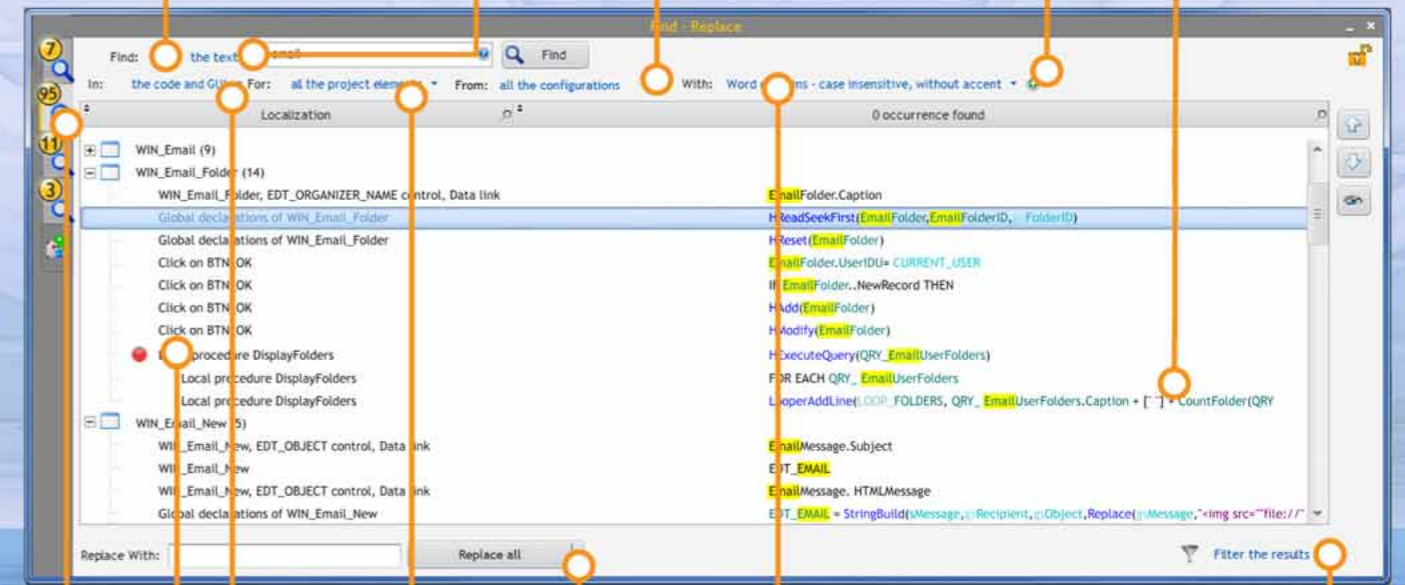
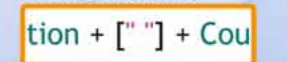
Advanced Code/GUI options



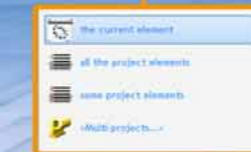
Filter by configuration



Syntactic coloring in the results



Inserting breakpoints



Precise search targeting

Simultaneous searches



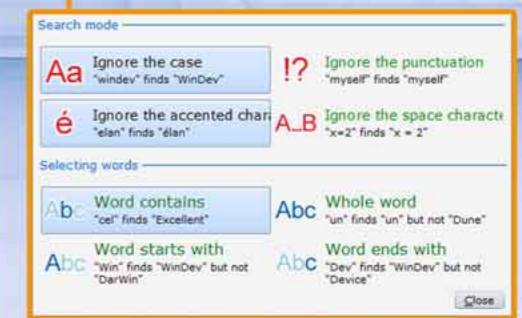
Search Code/GUI choice

Replace all
Replace the selection

Checked replacement

Filter the results

Adjustment without performing a search



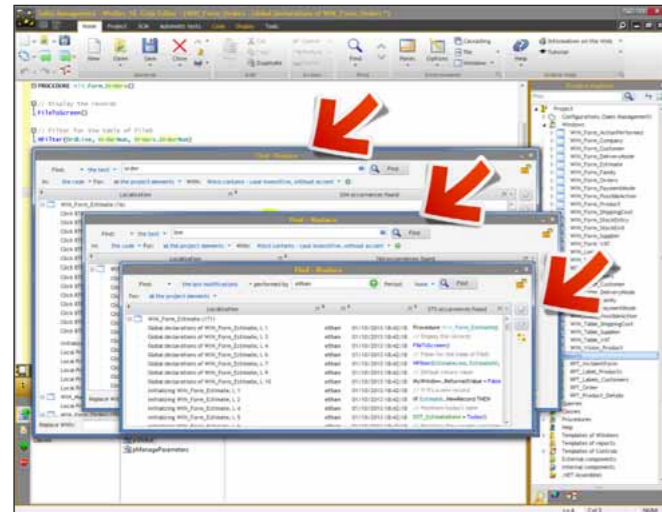
Options for case and characters

042 new feature WD WB WM

SEARCH #11: SEVERAL SIMULTANEOUS SEARCH WINDOWS

You can now have several search windows open at the same time.

This new features allows you to consult and use the result of several searches at the same time.



3 search windows opened at the same time

Benefit provided by this version 18 new feature:
Searching has become more powerful.

043 new feature WD WB WM

SEARCH #12: ABILITY TO DIRECTLY SPECIFY A BREAK POINT

Once a line of code has been found, it is common to want to mark it with a debugger break point.

In version 18, setting a break point can be done directly from the search result.

Benefit provided by this version 18 new feature:
Fewer operations for setting a break point.

044 new feature WD WB WM

SEARCH #13: SEARCH RESULTS IN TREEVIEW FORMAT

The search result is presented in a treeview format in version 18. The lines of code have more space to be displayed.

You can collapse the search results of the elements you're not interested in.

Benefit provided by this version 18 new feature:
The visualization of the result is better organized.

045 new feature WD WB WM

SEARCH #14: SEARCH HISTORY

In version 18, each search performed is stored in the history. All the selected criteria (search mode, range, filter, etc.) is stored. This history is very useful in the case of complex searches, especially the ones using regular expressions.

Criteria can be pinned to be kept as long as needed.

Benefit provided by this version 18 new feature:
Search and re-search!

046 new feature WD WB WM

SEARCH #15: IGNORE THE SPACE CHARACTERS

The ignore space character feature is introduced in version 18. When this option is enabled, spaces are ignored inside the expression to find.

"IF i = 1" and "IF i=1" are found the same way!

Benefit provided by this version 18 new feature:
Easier search.

047 new feature WD WB WM

SEARCH #16: COMBINE OR EXCLUDE WORDS

This new option is really very useful.

You can now search all the words in a list, but, even better, you can exclude from the search results that contain one or more specific words (by putting a minus sign in front of the word).

Benefit provided by this version 18 new feature:
Restrict the search result.

048 new feature WD WB WM

SEARCH #17: PRINT A SEARCH RESULT

You may want to print a search result: now you can do it with version 18.

Benefit provided by this version 18 new feature:
Some developers like to have hard copies.

049 new feature WD WB WM

SEARCH #18: SEARCHING CONDITIONAL TARGET CODE

A conditional target code enables you to write code specific to a platform in your project. For example, a piece of code will only be run if the project is running on Java.

Searching all the pieces of conditional target code is now offered in version 18.

Benefit provided by this version 18 new feature:
Modifications specific to a given target are easier to implement.

050 new feature WD WB WM

SEARCH #19: FILTER RESULTS

Once a search has been performed, often we need to refine the result, because too much information came back.

Version 18 enables you to add a criteria to the search: for example, do not search inside the comments...

Benefit provided by this version 18 new feature:
Refine the already performed search.

051 new feature WD WB WM

SEARCH #20: COLOR THE CODE IN THE SEARCH RESULT ACCORDING TO THE SYNTAX

Version 18 displays the code found using different color for each type of word! It makes the code easier to read.

Benefit provided by this version 18 new feature:
Easier to read code.



Deploy your applications without any hardware constraints.

052 new feature WD WB WM

THE CLOUD: AVAILABLE

The principle behind cloud computing is to outsource application running and data storage to remote compute platforms so you don't have to maintain them.

Resources (storage, memory, compute, bandwidth) are made available to users on demand.

The user is usually billed proportionally to his actual usage. The cloud for PC SOFT applications, offered by PCSCloud (www.pcsccloud.net) offers a large number of possibilities:

- automatic hosting of WEBDEV sites: one click is all you need to deploy
- hosting of web services
- hosting of HyperFileSQL databases, to use with a site or for remote access from any application
- hosting of installations: your team have access from anywhere in the world to their WINDEV and WINDEV Mobile applications, as well as to their updates.

Benefit provided by this version 18 new feature:
Deploy your applications in the cloud.

WLANGUAGE



053 new feature WD WB WM

SECURE FTP: SFTP PROTOCOL

SFTP is the acronym for Secure File Transfer Protocol. This protocol is based on a SSH channel (secure SSH connection).

The following symmetric encryption algorithms are supported: 3DES, Blowfish, AES and APRCFour.

This protocol is mainly used by the Unix and Linux servers.

Benefit provided by this version 18 new feature:
Support of a secure protocol for file transfer.

CLOUD COMPUTING



054 new feature WD WB WM

SECURE FTP: FTPS PROTOCOL

FTPS is the acronym for File Transfer Protocol Secure. The communication is secured by the SSL protocol. The following symmetric encryption algorithms are supported: 3DES, Blowfish, AES and ARCFOUR. This protocol is mainly used by the Web IIS servers.

Benefit provided by this version 18 new feature:
Support of a secure protocol for file transfer.

055 new feature WD WB WM

NEW FUNCTION: IPRINTHTML

The new `iPrintHTML` function lets you, as its names suggests, print HTML content.

You can specify a print width and/or height. If needed printing can be done over several pages (also see the new feature # 111 in the report editor).

Benefit provided by this version 18 new feature:
HTML printing without the need to program anything.

056 new feature WD WB WM

TYPE INFERENCE

Type inference makes it easier to declare variables. For example:

```
given x = "WinDev is great"
```

Benefit provided by this version 18 new feature:
The source code is even smaller

057 new feature WD WB WM

NATION FUNCTION: APPLIED INSTANTLY TO THE OPEN WINDOW

The `Nation` function lets you change language in an application. When the `Nation` function is applied in a WINDEV 18 application, the window is instantly refreshed with the new language (in older versions the application would restart and go back to the home screen).

Benefit provided by this version 18 new feature:
Improved ease of use for the end user.

058 new feature WD WB WM

JIT (JUST IN TIME COMPILATION): OOP AND STRUCTURES

Just in Time compilation is now available for OOP code: member access, method call...

Benefit provided by this version 18 new feature:
Applications are faster.

059 new feature WD WB WM

FLOADBUFFER: SPECIFY THE PIECE OF FILE TO LOAD

`fLoadBuffer` lets you load the content of a file (usually in binary format) into a variable.

To load only part of the file, before version 18, you had to program the operations in details: open the file, point to the section to read, read the block, ...

The new parameters of the function available in version 18 let you perform this type of operations in a single line of code.

Benefit provided by this version 18 new feature:
Reduces the number of lines of code.

060 new feature WD WB WM

BUFFERTOINTEGER, BUFFERTOREAL

The 2 new functions, `BufferToInteger` and `BufferToReal`, transfer in a single line of code the content of the buffer into an Integer or Real type variable.

This really simplifies your code, and prevents a lot of errors.

Benefit provided by this version 18 new feature:
Avoids a large number of code lines and prevents potential errors.

061 new feature WD WB WM

ARRAYCOPY: ONLY COPY A PIECE

The `ArrayCopy` function is very useful. In version 18, you can specify a range of indexes to copy.

Benefit provided by this version 18 new feature:
Simpler code, errors avoided.

062 new feature WD WB WM

ARRAYREVERSE

This function reverses all the elements of an array.

Benefit provided by this version 18 new feature:
Simpler code.

063 new feature WD WB WM

NEW FUNCTIONS FADDTXT, FADDBUFFER

To add some text at the end of an existing file, now all you have to do is use the new `fAddText` function and you're done! No need to open the file and point to the end!

The `fAddBuffer` function does the same thing for binary data.

Benefit provided by this version 18 new feature:
Easy handling of external files.

064 new feature WD WB WM

FFIND: FIND THE POSITION OF A BINARY BLOCK

The new `fFind` function lets you find the position of a binary buffer inside a file.

For example, this function is useful for finding 2 tags and reading the text in-between these tags.

This avoids having to load the entire file.

Benefit provided by this version 18 new feature:
The process is faster.

065 WD WB WM

SET THE TYPE OF A FUNCTION'S RETURN VALUE

The return value of a procedure can have a set type.

This allows the compiler to more strictly control the type of the variables handled.

Benefit provided by this version 18 new feature:
Better rigor.

066 WD WB WM

NEW TYPES: ENUMERATION AND COMBINATION

The new WLanguage type `enumeration` lets you easily work with a list of values.

Simply declare the list of values that a variable of this type can take, for example: "On", "Off", "Broken".

The compiler triggers a compilation error if the program tries to assign a value other than one from the list.

During the assignment process, the assisted entry offers the list of possible values. The `<`, `>`, `<>`, `>=`, `<=` operators are active.

The new WLanguage type `combination` also lets you easily handle a list of values, but also combine values.

For example: "Read", "Write". A variable can take the value "Read + Write".

This control has a mechanism to prevent data from a list to get out of sync between a host application and its internal components when the enumeration or combination is changed.

Benefit provided by this version 18 new feature:
Easy management of a list of values by programming.

067 new feature WD WB WM

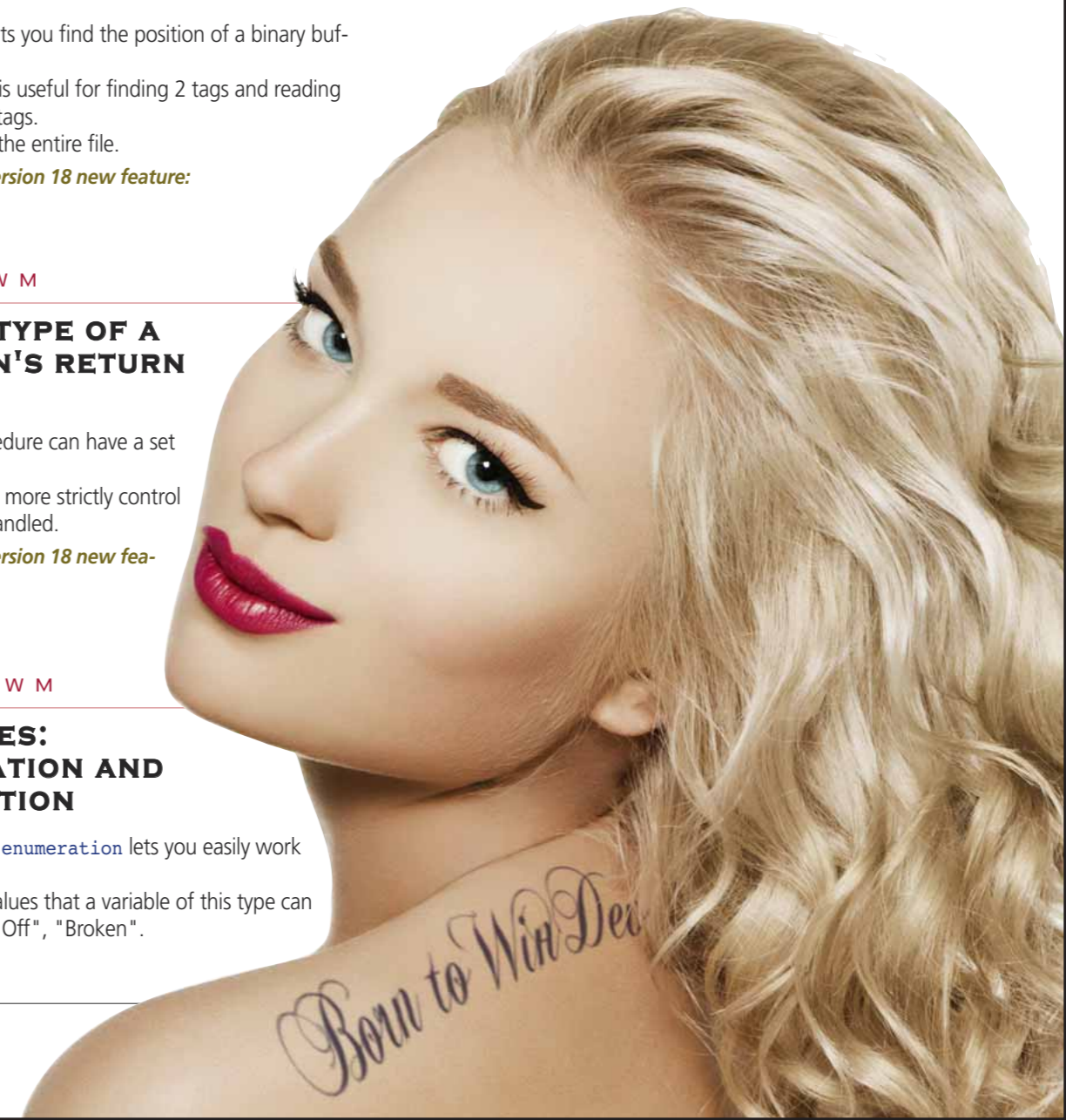
TEXTTORTF: BUILD AN RTF STRING

The `TextToRTF` function gives you an RTF string containing the text passed as parameters.

Benefit provided by this version 18 new feature:
Building RTF strings is easier.



On building sites, version 18 does the job!



068 new feature WD WB WM

TABLEDELETESELECT: DELETE THE SELECTED ROWS

Deleting rows from a table is a common source of error. For example, when the first row is deleted, all the following indexes are offset by one! Lots of developers forget that! Thanks to the new `TableDeleteSelect` function, all the selected rows are deleted in a single operation: no more risk of error, and the code is simpler.

Benefit provided by this version 18 new feature:
Reduced potential for error, simpler code.

069 new feature WD WB WM

EXTRACTLINE: RETURNS THE NTH LINE OF A TEXT

The new `ExtractLine` function is a very useful mnemonic function. It extracts a given line of text.

Benefit provided by this version 18 new feature:
Simplified extraction.

070 new feature WD WB WM

TREEVIEW TABLES: 3 NEW FUNCTIONS

These functions are useful for handling treeview tables.

`TableChildCount` lets you find out the number of children in a treeview table.

`TableMoveLine` moves a row in a treeview table.

`TableSwapLine` swaps the content of two rows in a treeview table.

Benefit provided by this version 18 new feature:
Saves you from writing lines of code.

071 new feature WD WB WM

GPS: DECIMALTOSEXAGESIMAL SEXAGESIMALTODECIMAL

GPS systems (among others) use a specific coordinate system: the sexagesimal system. For example 121°6' longitude corresponds to 121,135° longitude. Switching between the two systems is done automatically using the `DecimalToSexagesimal` and `SexagesimalToDecimal` functions.

Benefit provided by this version 18 new feature:
Easier programming of coordinates.

072 new feature WD WB WM

WEEKTODATE

The `WeekToDate` function returns the first day of the week whose number is passed as parameter.

Benefit provided by this version 18 new feature:
Less code!

073 new feature WD WB WM

"TRUNCATE" FUNCTION

The `Truncate` function lets you truncate a string to the number of characters specified.

The same result can be achieved by using the `Left` function, but a use study showed that the `Left` function is not perceived as providing this action. Beginners are doted on! A parameter lets you specify that you start truncating from the end.

Benefit provided by this version 18 new feature:
More intuitive.

074 new feature WD WB WM

LOCK THE WINDOWS SESSION

The new `sysLockSession` parameter for the `SysShutdown` function lets you lock the current Windows session. The user then needs to enter his or her Windows password to use the application.

This allows you to secure a sensitive application, when a user steps away from his desk for instance.

Benefit provided by this version 18 new feature:
Increased application security.

075 new feature WD WB WM

"REPLACE" FUNCTION: A SET OF STRINGS AS PARAMETERS

You can now replace a set of strings with another string in a single line of code.

The example below replaces the `\\`, `\`, and `/` characters with a space:

```
Text = Replace(Text, ["\\", "\\", "/"], " ")
```

Benefit provided by this version 18 new feature:
More powerful function.

076 new feature WD WB WM

FUNCTION FOR GENERATING A PASSWORD

Sometimes an application needs to generate password for a user. The new `GeneratePassword` function lets you generate a ran-

dom secure password.

The function accepts several elements as parameters: a size, set of characters accepted...

Benefit provided by this version 18 new feature:
Saves you from writing more code and results in greater security.

077 new feature WD WB WM

THE DATETOSTRING FUNCTION RETURNS THE DATE IN NATURAL LANGUAGE

A new parameter of the `DateToString` function lets you obtain a result in natural language.

For example, if it is 2:00 pm and the time to display is 2:10 pm, the function can return a string containing "In 10 minutes".

The result can be "2 days ago", "In 1 year", "In one week", "2 hours ago"...

The function now accepts `DateTime` type parameters, including for the regular formats.

Benefit provided by this version 18 new feature:
The result is easier to understand for the user.

078 new feature WD WB WM

TRANSFORM NUMBERS INTO TEXT

The new `NumberInWords` function spells out a number. The most common use is for filling out checks!

`NumberInWords(238)` returns `Two hundred thirty eight`.

Benefit provided by this version 18 new feature:
Instant conversion to text.

079 new feature WD WB WM

STRINGTODATE AND DATETOSTRING: DATETIME PARAMETER

The `StringToDate` and `DateToString` functions were accepting `Date` type parameters.

Now in version 18 these functions also accept `DateTime` type parameters.

For example:

```
d is DateTime
```

```
s is string=DateToString(d,"MM/DD/YYYY HH: MM")
```

s is set to "12/18/2012 18: 00" (for example).

Benefit provided by this version 18 new feature:
More code avoided.

080 new feature WD WB WM

WI-FI FUNCTION FAMILY



Wi-Fi is now mainstream. The new WiFi function family lets you easily program the processes you want.

The 8 functions are easy to use: `WiFiActivate`, `WiFiAddNetwork`, `WiFiConnect`, `WiFiDetectAccessPoint`, `WiFiStatus`, `WiFiConnectionInfo`, `WiFiListNetwork`, `WiFiDeleteNetwork`.

Benefit provided by this version 18 new feature:
Wi-Fi communication is made easier.

WINDEV in Chinese.

文待悟

A Chinese version of WINDEV is distributed in China. The environment, as well as the WLanguage are of course in Chinese.

```
点击订单
H//添加订单
H重置(订单)
订单.订单日期=输入框_订单日期
订单.客户号=组合框_客户
订单.无税总额=输入框_无税总额
订单.含增值税总额=输入框_含增值税总额
订单.总额=输入框_总额
H添加记录(订单)

H//添加订单行
对于所有表格_订单行
H重置(订单行)
订单行.订单号=订单.
订单行.价格=列_单
订单行.数量=列_数量
订单行.参数=列_产品
H添加记录(订单行)
结束
```

7Z COMPRESSION

The compression formats supported by WLanguage gain the "7z" format, which compression rate is often amazing in capacity.

Benefit provided by this version 18 new feature:
Support for new compression format.

PROCEDURES: PASSING ARRAYS OF VALUES

In version 18, you can pass arrays of values as parameters to a procedure.

For example:

```
proc([5,12,"Albert"])
```

Benefit provided by this version 18 new feature:
Function overloading is simpler.

+ = AND -= OPERATORS ON PROCEDURE

The += and -= operators are very useful.

In version 18 they're allowed on `Procedure` type variables.

This allows you to easily manage a list of procedures to call, to add and delete procedures, and call this list of procedures in a single call.

```
p is Procedure
p += proc1 // add proc1
p += proc2 // add proc2
p(1) // call proc1(1) then proc2(1)
```

Benefit provided by this version 18 new feature:
Powerful code.

IMAGE MANAGEMENT FUNCTIONS: 6 TIMES FASTER

There is an `image` type in WLanguage.

The assignment operations between `image` type variables or between `image` type variables and `image` type controls have been optimized: the operations' speed is 6 times faster.

Benefit provided by this version 18 new feature:
Improved image processing speed.

EAN128 (GS1-128) BAR CODES

The control characters are not displayed under the bar code anymore.

The displayed or printed label is then much easier to read by a human!

Note that the EAN-128 bar code has changed name and is now called GS1-128.

Benefit provided by this version 18 new feature:
Print the bar code content in clear below the bar code itself.

WEBSERVICES

WEBSERVICE: ARRAY TYPE RESULTS (SOAPARRAY)

Webservices can return a result or pass a parameter as an array (`SoapArray`).

To automatically manage this type of return, version 18 offers support for automatic arrays.

The array structure is visible in the editor explorer, access by programming is easy thanks to the bracket operator.

Benefit provided by this version 18 new feature:
Simplified WebServices result in array format.

DATA BINDING ON ARRAY: WEBSERVICES

If a Webservice returns a result in the form of an array, you can perform data binding on the result, and display it without having to code anything.

Benefit provided by this version 18 new feature:
Automatic display.

INCLUDE WEBSERVICES

A WDSL file is a WebServices description file.

A WDSL file can include other WDSL files, via the "Import" tag. WebServices are now managed automatically.

The project explorer shows the WebServices included.

The types and functions of the WebServices are automatically declared in WLanguage.

Benefit provided by this version 18 new feature:
Support for including WebServices.

ATTRIBUTE SUPPORT IN THE WDSL

The WebServices' attributes are automatically accessible without having to analyze the XML document.

These attributes are recognized by WLanguage as properties of the WebServices' parameters.

Benefit provided by this version 18 new feature:
A lot of coding avoided.

MULTIPLE RESPONSES

A Webservice can return several results at the same time. Retrieving these results is now automatic.

Benefit provided by this version 18 new feature:
No need to analyze the XML result.

SUPPORT FOR MULTIPLE HEADERS

Some WebServices require to be called with several header. The `SOAPAddHeader` function lets you add as many headers as you want.

Benefit provided by this version 18 new feature:
Better support for WebServices requiring multiple headers.

EBAY WEBSERVICE



A call to a Webservice triggers the execution of a standard http request. In WINDEV this execution is automatic and transparent. Some WebServices require a special header in this http request: it is notably the case for a popular eBay Webservice. In version 18, you can add elements in the http request of a query.

Benefit provided by this version 18 new feature:
Easy support for some specific WebServices.

MESSAGE SIGNATURE

You can add a certificate and sign XML requests sent to the server.

This insures the integrity of the messages received by the server.

Benefit provided by this version 18 new feature:
Better security for WebServices.

MANAGEMENT OF WS-ADDRESSING

The WS-Addressing (WSA) header is intended for synchronous or asynchronous exchanges requiring identification of the target server.

The "Action" element of the WSA header lets you specify the action to perform.

The "Action" header of the WSA standard is taken into account by the WebServices starting with version 18.

Benefit provided by this version 18 new feature:
Better security for WebServices.

CIRCULAR REFERENCES IN SCHEMAS

The "schema" defines the types handled by the Webservice.

A type can use the definition of another type.

The declarations can be "circular": the first type uses the second type which in turns uses the first.

Version 18 supports these circular references.

Benefit provided by this version 18 new feature:
Advanced type support in WebServices.

SESAM VITALE

All the new features provided by version 18 for WebServices allow for easy and secure management of the interface for the new Vitale cards.

Benefit provided by this version 18 new feature:
Your application have easy access to the Sesam Vitale card.

CODE EDITOR: 8 NEW FEATURES

CONVERT A TEXT'S CASE

Sometimes you need to capitalize a text: a variable name for instance.

The new Ctrl M key combination allows it.

You can also convert a text to all lower case (Ctrl Shift M).

Benefit provided by this version 18 new feature:
Easily change case.

INSTANT ACCESS TO A PROCEDURE

In version 18, it is now possible to access a procedure or a method by typing only part of its name.

Benefit provided by this version 18 new feature:
Quick access to the procedures.

ALT-ENTER OPENS THE 7-TAB WINDOW OF THE CURRENT CONTROL

In the code editor, when the cursor is positioned on a control's name, the Alt Enter key combination (like in the window editor) directly opens the "7-tab" window of this control. Very useful!

Benefit provided by this version 18 new feature:
Avoids some operations.

THE TOOLTIP DISPLAYS THE CONDITION FOR THE "IF"

In an IF THEN ELSE END statement, hovering the ELSE or END keyword brings up the condition set in the IF statement. If the code is a little long, or when there are several nested IF statements, this feature is really appreciated.

Benefit provided by this version 18 new feature:
Easier code understanding.

THE TOOLTIP DISPLAYS ALL THE LANGUAGES OF A MULTI LANGUAGE STRING



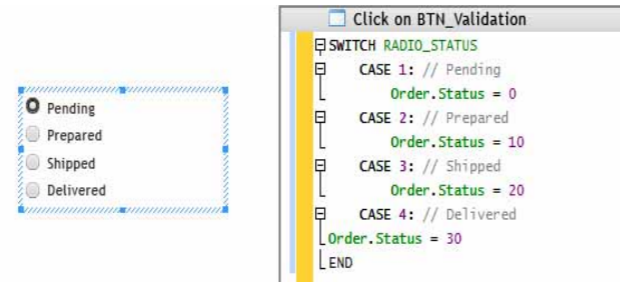
The tooltip displays the text translated into the project's language

When hovering a multilingual string, the value of the string in all the project languages is displayed in a tooltip.

Benefit provided by this version 18 new feature:
Avoids some operations.

"SWITCH" PRE-FILLED IN RADIO BUTTON CONTROLS

Creating a SWITCH statement on a radio button is greatly simplified. The code editor in version 18 automatically adds the CASE statements corresponding to each option of the radio button. The caption for each option is automatically added in comments for the line.



The code is automatically pre-filled based on the control

Benefit provided by this version 18 new feature:
Time savings, and piece of mind.

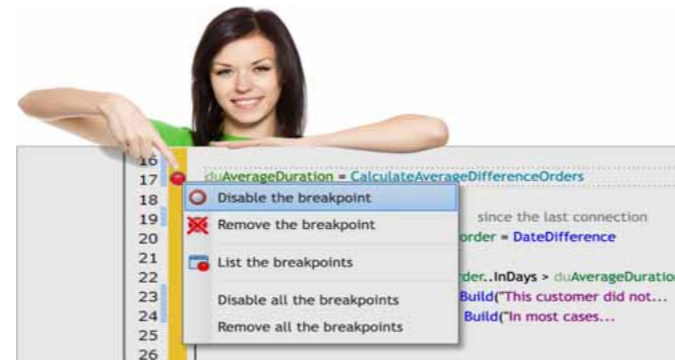
DEBUGGER: OPTION TO PREVENT MINIMIZING DURING A GO

By default, when performing a GO operation, the editor is minimized. Depending on your hardware configuration (large screen, 2 screens, etc.), this is not needed. With the new option in version 18, you can keep the editor open.

Benefit provided by this version 18 new feature:
No need to restore the environment during the GO.

DISABLE OPTION FOR BREAKPOINTS

Breakpoints can be disabled in the code editor. A hollow circle identifies them.

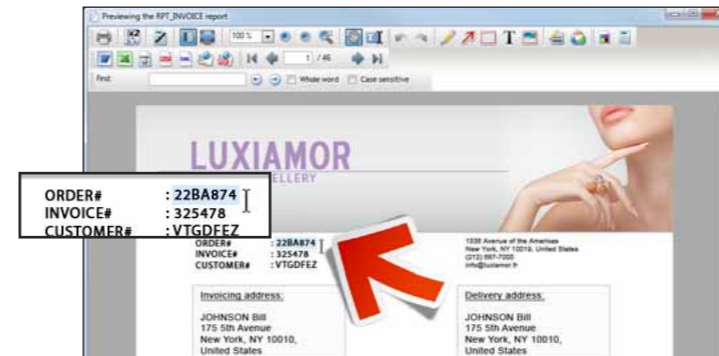


Manage breakpoints

Benefit provided by this version 18 new feature:
Allows you to keep a breakpoint for later use.

REPORT EDITOR AND PRINTING

PREVIEWING: TEXT SELECTION (COPY/PASTE)



Text selection from the preview: here the order number, which can be copied then pasted

Text selection inside the preview is now available. It allows you to perform copy/paste operations from the preview. This is very useful to the end user.

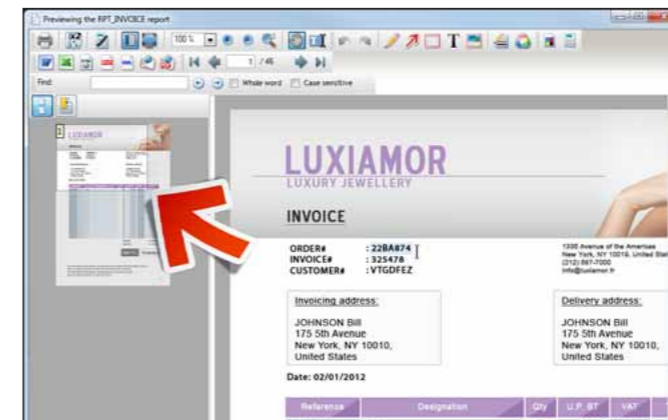
Note that if needed (confidentiality, etc.) this functionality can be disabled by the `iParameterPreview.WLanguage` function.

Benefit provided by this version 18 new feature:
Easy Copy/Paste from the preview.

PREVIEW: ZOOM AND POSITIONING AREA

In the print preview window, you can display, on the left, thumbnails corresponding to the pages.

The part of the report visualized is shown in the thumbnail. The zoom and positioning area can be resized and moved in the thumbnail, the zoom factor can be modified...

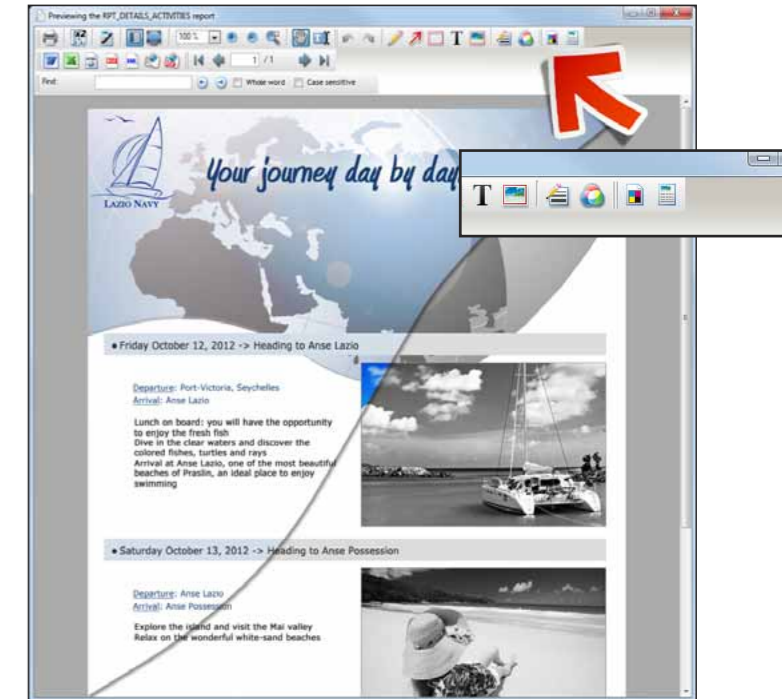


On the left, the "selection and zoom" area, which marks the part of the report visualized

Benefit provided by this version 18 new feature:
Easy positioning and zoom.

PRINT IN BLACK & WHITE FROM THE PRINT PREVIEW

A new option lets the user directly change the type of printing, color or Black & White, from the print preview window.



Print in Color or in Black & White? The end user chooses from the preview!

Benefit provided by this version 18 new feature:
Saves on ink cartridge refill!

SWITCH BETWEEN LANDSCAPE AND PORTRAIT MODE FROM PRINT PREVIEW

Sometimes the end user wants to choose or modify the orientation of a report.

Since the layout depends on the format, the developer will need to plan for both layouts when creating the report.

In this case, an icon comes up when previewing the report allowing the end user to choose the orientation best suited for printing depending on the printer, etc.

Benefit provided by this version 18 new feature:
Increased choices for the end user.

DOUBLE-SIDED PRINTING FROM PRINT PREVIEW

A new option lets you change the print mode from "single sided" to "double sided" from the print preview window.

Benefit provided by this version 18 new feature:
The developer doesn't need to program anything.

ADAPT THE PRINTING TO A4, A3, US LETTER FORMAT FROM THE PRINT PREVIEW WINDOW

The developer doesn't necessarily know what type of printer the end user has access to.

End users who have access to an A3 format printer usually want to take advantage of it.

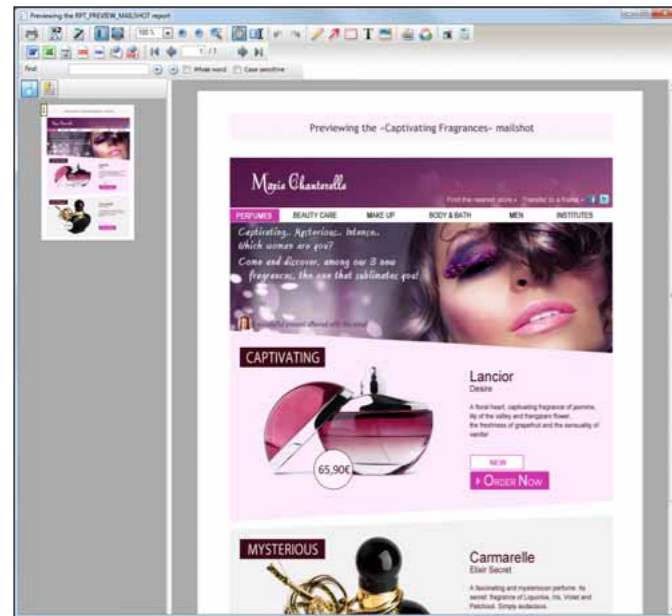
This is possible with version 18.

The developer simply needs to plan the report for each of the offered versions when he creates it.

A report can be prepared for different print formats: A4, A3, US Letter.

Benefit provided by this version 18 new feature:
Optimization for each paper format.

PRINT HTML CONTENT



Print HTML content

Today a lot of content is stored or handled in HTML format. WLanguage offers a large number of functions for handling this content.

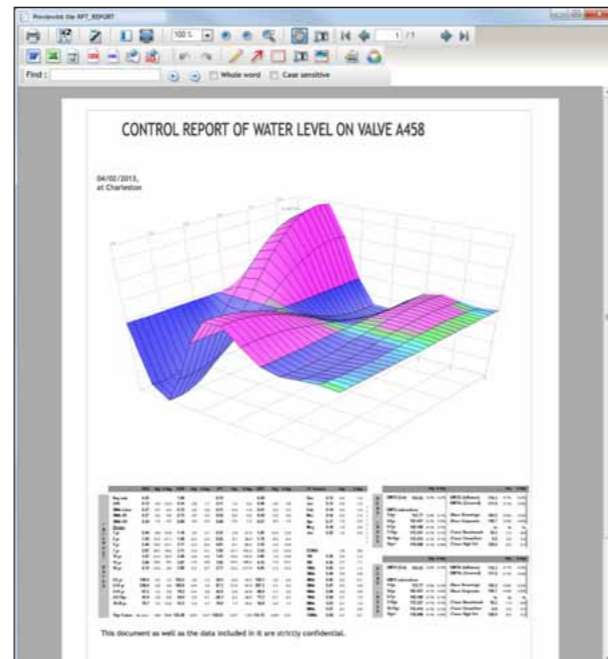
In version 18, the report editor gains a new type of very powerful and useful control: the HTML control.

Thanks to this new control, printing HTML content (with tags, images, etc.) is done directly without any programming. The HTML content can be static, and directly copied into the report editor when creating the report, or it can be dynamic (found in a .HTM file, in a HyperFileSQL data file memo, etc.) and read when printing.

Benefit provided by this version 18 new feature:
Radical simplification of HTML printing.

SURFACE CHART PRINTING

The new "surface" type chart can be printed directly in reports.



A "Surface" type chart in a report.

Benefit provided by this version 18 new feature:
The developer doesn't need to program anything.



Version 18: a key advantage for the industry

CONTINUOUS INTEGRATION

The integration consists in automatically compiling (up to the setup procedure creation) one or more projects at regular time intervals (usually everyday) in order to instantly detect (and correct) potential defects in the project: compilation errors, errors detected by the automated tests, missing files, missing resources, ... The setup of the integration continues to be very simple with WINDEV and WEBDEV and saves you a lot of time and organizational headaches.

The larger your teams and projects are, the larger the gains.

PRODUCTION CONTROL: SPECIFY THE ACTION PLANS' ORDER

An action plan spool may contain a large number of action plans (several hundreds or thousands).

An action plan may have priority.

The coordinator now lets you change the order of the action plans inside the spool.

Benefit provided by this version 18 new feature:
Prioritize the action plans.

PRODUCTION CONTROL: SPECIFY THE AUTOMATE PRIORITY

The coordinator supports a priority order among automates. When several machines are available, this allows for the selection of a specific machine to execute the action plans (the fastest machine for instance).

Benefit provided by this version 18 new feature:
Take advantage of your machines' power.

USER GROUPWARE (PASSWORD)

IMPORTANT: the former format of User Groupware is still fully available.

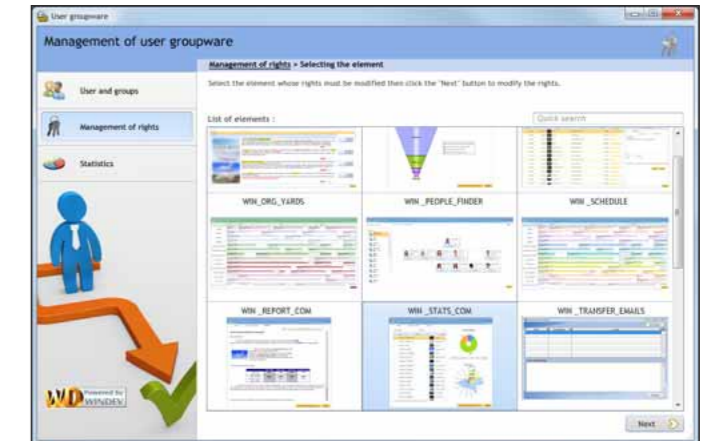
In a version 18 application you can still use the former version of User Groupware.

As always the compatibility of your applications is ensured.

MODERNIZED INTERFACE

The User Groupware windows have been modernized.

Their look has evolved.



The User Groupware's look has changed quite a bit!

Benefit provided by this version 18 new feature:
The definition of the rights is more visual.

APPLY A SKIN TEMPLATE AT RUN TIME



The User Groupware's look conforms to the application's skin template

The default look for the User Groupware has evolved, but in version 18 it is now possible to apply the application's skin template to the User Groupware windows.

If you want, the application will offer the same look for all the processes!
Reminder: the old interface is still available for backward compatibility.

Benefit provided by this version 18 new feature:
Better visual harmony for your application.

117 new feature WD WB WM

GROUP AND USER HIERARCHY

The User Groupware lets you define user groups (profiles).
A group may contain groups and/or users.
A user may belong to multiple groups.
Right management is much faster.

Benefit provided by this version 18 new feature:
Structured information makes it faster to define rights.

118 new feature WD WB WM

EDIT: CUSTOMIZATION VIA "INTERNAL COMPONENT" INCLUDED

The User Groupware can be customized: the User Groupware windows are then included in the project. In order to better organized processes, all the windows (and the code) are centralized in an "internal component", which is added to the project.
The User Groupware's analysis is included in this internal component.

Benefit provided by this version 18 new feature:
Easier handling of User Groupware data.

119 new feature WD WB WM

EXECUTION: DEFINE THE RIGHTS ON A COMPONENT'S ELEMENTS

A project often uses several components.
Version 18 of the User Groupware lets you define the rights on the component elements used in an application.

Benefit provided by this version 18 new feature:
Increased customization.

120 new feature WD WB WM

USE WINDOWS AUTHENTICATION

The User Groupware can use the user's Windows login and password.
The application will automatically use this information.
If the user changes his/her Windows password, it will also automatically be changed for accessing the application (or part of the application).

Benefit provided by this version 18 new feature:
Increased ease-of-use for the end user.

121 new feature WD WB WM

SSO: SINGLE SIGN ON

SSO (acronym for Single Sign On) enables you to enter your password only once per session, regardless of the number of applications run.

The end user only needs to log in once, and his or her login is applied to all the applications.

Of course, the applications must share the same database for the User Groupware right management.

Benefit provided by this version 18 new feature:
Increased comfort for the end user.

HYPERFILESQL

HYPERFILESQL

122 new feature WD WB WM

EMBEDDED NATIVE ANDROID HYPERFILESQL



In version 18, HyperFileSQL is also available for the Android operating system.

HyperFileSQL is now available for Windows, Linux, Mac, Windows Mobile, iOS (iPhone, iPad) and Android platforms.

The format of the data files and index files is identical, which allows for inter-system copies without any conversion.

The new features allows for more standard and portable development for your applications.

(Supported starting with Android 3.2, ARMv7 processor, for example Samsung Galaxy S3, Galaxy Tab, etc.).

Benefit provided by this version 18 new feature:
Your data are even more portable, you code is even simpler.

123 new feature WD WB WM

HYPERFILESQL ANDROID CLIENT/SERVER



In version 18, access to a HyperFileSQL server can be done from an Android device.

This allows you, for instance, to access the company's IS from a tablet over Wi-Fi.

(Android version 3.2 and higher, ARMv7 processor, for example Samsung Galaxy S3, Galaxy Tab, etc.).

Benefit provided by this version 18 new feature:
Your data are even more portable, you code is even simpler.

124 new feature WD WB WM

IN WHICH ORDER IS AN SQL QUERY IS RUN? EXPLAIN!

An SQL query can involve a lot of tasks: read, filter, sort, union, selection, ...

HyperFileSQL optimizes the order in which these actions are performed based on the available indexes and the data distribution. In some case a developer, a project manager or a data administrator may want to know what this order is.

The **Explain** function provides the details of a query's execution plan.

Benefit provided by this version 18 new feature:
You have visibility on how SQL queries are run.

125 new feature WD WB WM

SECURITY: ACCESS RESTRICTION BASED ON IP ADDRESS

In Client/Server mode, each computer accessing the server has an IP address, even on a local area network without Internet!

Access to the HyperFileSQL server can be restricted to predetermined addresses or range of addresses.

Other addresses are rejected.

Authorization can also be granted to one or more DNS names.

For example www.windev.com can be authorized.

Sub-domains are supported.

Benefit provided by this version 18 new feature:
Better access securit.

126 new feature WD WB WM

CLUSTER: EVOLUTIONS

As you know, the HyperFileSQL cluster enables you to synchronize several servers in real time (as opposed to the replication that lets you preform scheduled synchronization).

In version 18, the HyperFileSQL cluster offers practical evolutions: user right management is supported.

Adding users, changing a table's rights, ... is now automatically synchronized between all the cluster's nodes.

Changing a user password is therefore very easy.

Benefit provided by this version 18 new feature:
The cluster can be more customized.

127 new feature WD WB WM

INDEX OPTIMIZATION WHILE SERVER IS IDLE

A HyperFileSQL data server may have periods of low usage or be idle: at night or during the week-end for instance.

The server automatically detects low activity time.

During these periods, the HyperFileSQL server can trigger the opti-



All the databases are supported:

- SQL Server
- Oracle
- MySQL
- AS/400
- Access
- PostgreSQL
- DB2
- SQLite
- Informix
- ODBC, OLE DB
- HyperFileSQL
- ...

mization procedure to reorganize indexes based on the actual data, which will speed up subsequent accesses. Database access and modification performances are still optimal.
Benefit provided by this version 18 new feature:
Your databases' performance is improved without you having to do anything.

128 new feature W D W B W M

NEW SQL COMMANDS: ALTER TABLE, CREATE INDEX

The SQL **Alter Table** order lets you modify a table's structure. **Create Index** also lets you dynamically add indexes to an existing table.

Benefit provided by this version 18 new feature:
Act on the analysis via programming.

129 new feature W D W B W M

SQL: NATURAL AND USING IN JOINS

Natural lets you create joins using all the items with the same name in the 2 tables to link.

Using lets you create joins using the name of the item specified in the 2 tables.

Benefit provided by this version 18 new feature:
More powerful SQL programming.

130 new feature W D W B W M

INCIDENT HISTORY FOR A SERVER, EMAIL NOTIFICATION

A server may encounter various problems without any user (or developer) noticing.

For example, in a cluster, if a node becomes disabled, this will go unnoticed and the application will still work (this is the essence of clustering!).

Another example, a scheduled task may fail, or an automated backup may fail.

Version 18 offers 2 interesting new features in this area:

- keep an history of all incidents
- ability to be notified by email (and control center internal messaging) in case of a problem.

The incident history (and warnings) can be viewed from the HyperFileSQL Control Center.

The incidents are classified in 3 categories: low, medium and high. In version 18, it is now possible to be notified by email (or message) when an incident occurs, based on a severity level criteria.

Benefit provided by this version 18 new feature:
Better server monitoring.

131 new feature W D W B W M

INFORMATION ON THE EXECUTED QUERY

You can retrieve the number of added, modified, deleted elements for Insert, Update or Delete queries.

Benefit provided by this version 18 new feature:
You have an order of magnitude for operations.

REPLICATION OF HYPERFILESQL SERVERS

A very powerful new replication feature is being introduced in version 18: server replication. Data are replicated automatically from server to server, in an asynchronous way.

132 W D W B W M

MULTISITE SERVER REPLICATION

A company can have several HyperFileSQL servers in different locations, a server in each branch for example.

This company may want to replicate the data on each server.

It's now very easy thanks to version 18!

Benefit provided by this version 18 new feature:
Automatically synchronize remote servers.

133 W D W B W M

LINEAR REPLICATION

Linear replication is the simplest mode: 2 servers (or more) are linked 2 by 2.

Replication can be unidirectional or bidirectional (see later).

Benefit provided by this version 18 new feature:
Support all sites topologies.

134 W D W B W M

STAR REPLICATION

Star replication corresponds by default to a headquarter and branches (points of sales, ...). At regular time intervals (every evening, continuously, ...) branches synchronize their data with

the headquarter.
 Replication can be unidirectional or bidirectional (see below).

Benefit provided by this version 18 new feature:
Replication for branch offices is easy.

135 new feature W D W B W M

REPLICATION IN TREE STRUCTURE

A tree-like replication (by level) corresponds for instance to a global enterprise that synchronizes each national headquarter first, then the individual countries.

Replication can be unidirectional or bidirectional (see later).

Benefit provided by this version 18 new feature:
Replication for highly structured organizations is easier.

136 W D W B W M

UNIDIRECTIONAL REPLICATION

In an unidirectional replication, data travel only in one direction. Updates are only performed from one server to the other. The type of replication is defined per server pairs.

Benefit provided by this new feature:
It is easy to send data to a remote site.

137 W D W B W M

BIDIRECTIONAL REPLICATION

In a bidirectional replication data are synchronized both ways. The updates are performed on each one of the servers. Conflict resolution for updates is automatic. You can also manage conflicts by programming. The type of replication is defined per server pairs.

Benefit provided by this version 18 new feature:
Flexibility, load balancing.

138 new feature W D W B W M

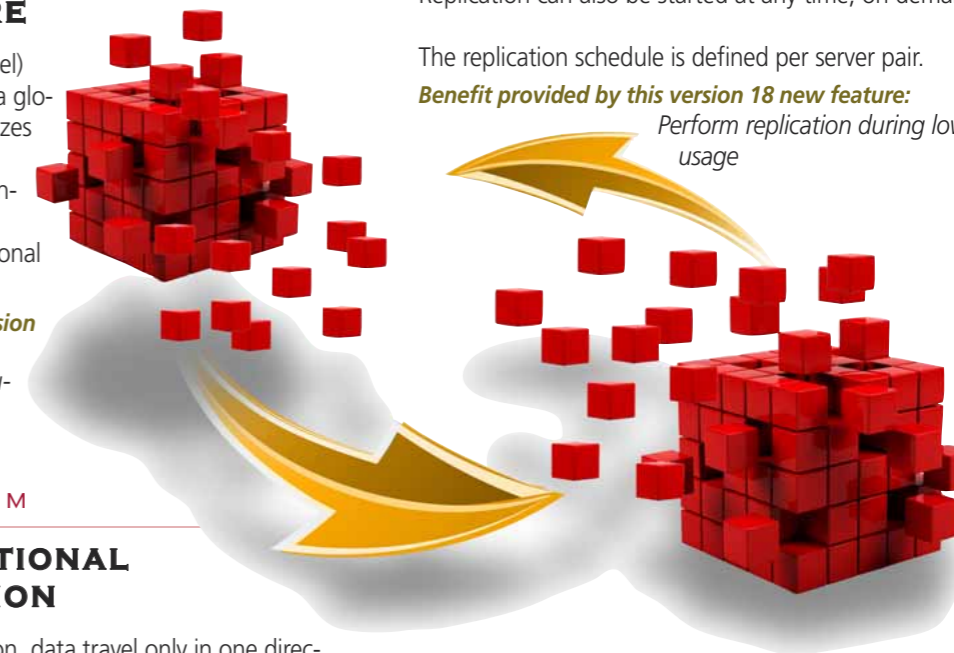
REPLICATION FREQUENCY: SCHEDULED

The replication can be scheduled, which means it happens at pre-set time intervals: in the evening at 8:00PM, every 2 hours, Saturday only, etc.

Replication can also be started at any time, on demand.

The replication schedule is defined per server pair.

Benefit provided by this version 18 new feature:
Perform replication during low server usage



139 new feature W D W B W M

REPLICATION FREQUENCY: CONTINUOUS MODE

Replication can be performed in "continuous" mode, that is for each modification of the database.

Note that the replication is performed in asynchronous mode, which means there can be a delay between the database modification on the server and the carry over of this modification to the other server.

For a synchronous modification, i.e. in real time, you need to use the Cluster mode, also available.

The replication schedule is defined per server pair.

Benefit provided by this version 18 new feature:
Continuous server synchronization. Ability to have a backup server.

140 new feature W D W B W M

REPLICATION SECURITY

During a replication, if one of the servers is not available (ADSL link offline), the replication will be re-tried automatically: in 10 seconds, in a minute, in 3 minutes, in 10 minutes, in an hour, or after the following time interval, etc.

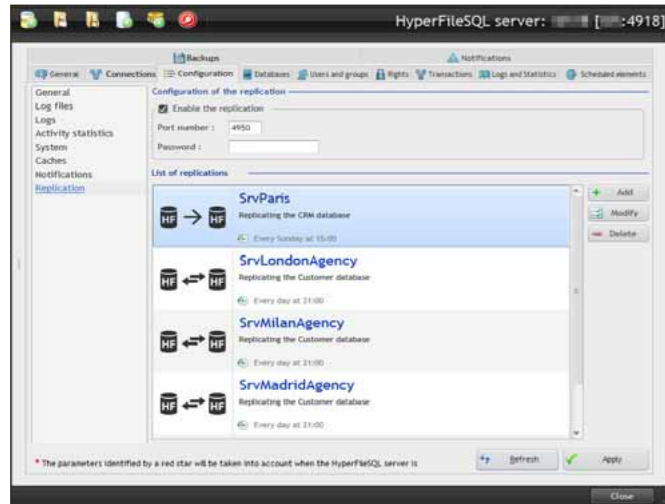
You can request to be notified (via email, ...) when a replication is delayed (see new feature # 130).

Benefit provided by this version 18 new feature:
Protection against potential network weaknesses.

141 new feature W D W B W M

SELECTION OF THE DATA TO REPLICATE

Replication may apply to all the databases found on a server, specific tables or parts of tables (data files).



Replication configuration in the Control Center

Benefit provided by this version 18 new feature:
Configurable granularity.

HYPERFILESQL CONTROL CENTER



142 new feature W D W B W M

EXECUTION OF STRUCTURE MODIFICATION TYPE QUERIES

You can now execute queries that modify the database structure from the HyperFileSQL Control Center. Update, Insert, Delete, Alter Table, Create Index type queries are now authorized.

Benefit provided by this version 18 new feature:
Make database maintenance operations easier.

143 new feature W D W B W M

DISPLAY THE NUMBER OF RECORDS PROCESSED BY A QUERY

When executing a query, the number of records (rows) impacted by the modification query is displayed. This provides feedback on the action's scope.

Benefit provided by this version 18 new feature:
Avoid unwanted operations.

144 new feature W D W B W M

DIRECTLY CONSULT SERVER INCIDENTS

If incidents happened on the server, you can view them directly from the HyperFileSQL Control Center. The configuration of the notification emails (that are sent automatically in case of a major incident) can also be done here.

Benefit provided by this version 18 new feature:
Easy event monitoring on the server.

145 new feature W D W B W M

CONFIGURE SERVER REPLICATION

The entire configuration of the server replication: link among servers, priority, schedule, files to replicate, etc. is easily done from the HyperFileSQL Control Center.

Benefit provided by this version 18 new feature:
Easy replication configuration.



WINDEV®



146 new feature W D W B W M

118 COMMON NEW FEATURES

WINDEV 18 benefits from all the common new features of version 18.

You benefit from the new controls (see below), from the evolution of the controls, from the evolution of WLanguage, from the evolution of HyperFileSQL, your end users benefit from new AAF, you keep on top of new technologies ...

The environment is more productive, more efficient and more pleasant to use.

CONTROLS

147 new feature W D W B W M

NEW ROLAP CONTROL: PIVOT TABLE

This new control allows the end user (in this case a decision maker) to analyze mountains of data automatically. Data are aggregated as you want, and the results can be consolidated according to several "axes" (see new features #005 to #010 for more details).

Benefit provided by this version 18 new feature:
Decision makers' heaven!

148 W D W B W M

NEW TIMELINE CONTROL

This new type of control enables you to represent event chronology, or to modify such representation (see details in new feature #011).

Benefit provided by this version 18 new feature:
New control.

149 new feature W D W B W M

NEW MULTILINE ZONE CONTROL

This type of control lets you place controls of different types in each line.

This allows you to customize each line, for example by offering a check box on a line to change the status, a progress bar on another line, etc. (see the details in new feature #012).

Benefit provided by this version 18 new feature:
More sophisticated interface without any programming.

150 new feature W D W B W M

TAB: ROW WITH ARROWS

A new display option for tabs is introduced: if the number of tabs is greater than what can be displayed on one row, you can ask to add scroll arrows instead of displaying the tabs over several rows.





Panes in version 17



Panes in version 18 with the "1 row only" option.

Benefit provided by this version 18 new feature:
Tab headers are more readable.

151 new feature WD WB WM

TABLE: COLUMN SUB-HEADER

Tables can now have a column sub-header. Several columns can have a unique title, located below the usual column titles. Table readability is improved in version 18.

Service	2012		2013	
	December	January	January	February
Massages	\$260 840	\$280 410	\$260 840	\$280 410
Hand beauty	\$658 050	\$551 210	\$658 050	\$551 210
Face care	\$341 220	\$364 036	\$341 220	\$364 036
Relaxing care	\$120 600	\$135 621	\$120 600	\$135 621
Fresh care	\$100 130	\$100 162	\$100 130	\$100 162

The 2013 header covers two columns

Benefit provided by this version 18 new feature:
Even more advanced table customization.

152 new feature WD WB WM

TABLE: BREAK HEADER ALWAYS VISIBLE (OPTION)

If there was a large number of data displayed in a table, the break header could disappear during scrolling. In version 18, you can request that the header always be visible: it won't be moved during the scrolling.



The break header (the swimsuit size in our case) always remains visible when the end user scrolls down the window.

Benefit provided by this version 18 new feature:
Break header always visible.

153 new feature WD WB WM

"OPEN" FUNCTION FOR INTERNAL WINDOW

A new internal window that must be used by itself can be opened directly like a regular window.

Benefit provided by this version 18 new feature:
No need to insert an internal window into a blank window.

154 new feature WD WB WM

RADIO BUTTON/CHECK BOX: ADD OPTIONS BY PROGRAMMING

In version 18, you can add options to a radio button or a check box via programming. You can also delete some options.

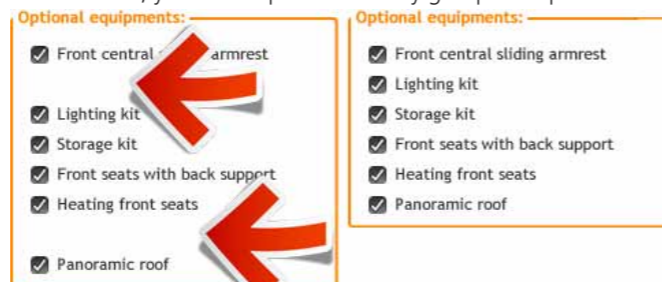
Benefit provided by this version 18 new feature:
Customizing radio button and check boxes is easier.

155 new feature WD WB WM

RADIO BUTTON/CHECK BOX: NO MORE HOLES FOR HIDDEN OPTIONS

A radio button or check box option can be temporarily hidden. In WINDEV's previous versions, this would leave a "hole" in the displayed options.

In version 18, you can request to visually group the options.



Before version 18, with version 18: no more holes

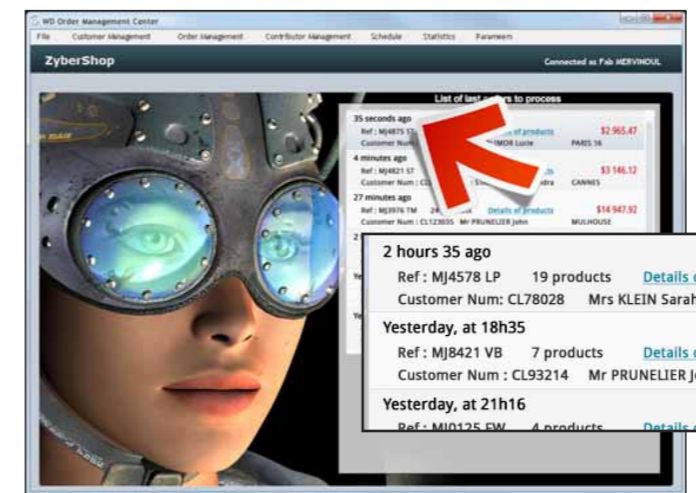
Benefit provided by this version 18 new feature:
Radio buttons and check boxes that are dynamically modified look better.

156 new feature WD WB WM

DATE/TIME MASK: "2 HOURS AGO", "YESTERDAY", ETC.

For representing dates and times, a large number of applications use a terminology based on the spoken language. Instead of displaying "This event occurred at 2:48 pm", the application displays "This event happened 2 hours ago" (or 2 days ago, or 3 weeks ago, etc.)

This type of display is offered for edit and static controls. No code line is required to do so, simply use the new mask. It is also useful when displaying news streams.



Orders are taken ...

The user is informed in real time

Benefit provided by this version 18 new feature:
The data displayed are easier to interpret, which limits the risk of errors.

157 new feature WD WB WM

HEXADECIMAL MASK

Edit and static controls offer a new "Hexadecimal" mask. This lets you display a buffer in binary format in a readable way.

Benefit provided by this version 18 new feature:
Easy display.

158 new feature WD WB WM

2 NEW SKIN TEMPLATES

Version 18 offers 2 new skin templates that can be freely used in your applications. This increases the customization possibilities for your applications.



Benefit provided by this version 18 new feature:
New graphic possibilities for your application.

With WINDEV 18 you build great programs



AAF



The AAF (Automatic Application Features) are a set of features automatically benefiting the end users of applications developed with WINDEV, WEBDEV or WINDEV Mobile. Your users certainly appreciate exporting to Word, Excel, sending emails, setting up timers on buttons, etc. Without any programming, AAFs instantly add a set of rich features to your applications and make users more efficient. In version 18, new AAFs are added to the already large list of existing AAFs.



159 new feature WD WB WM

NEW AAF: AUTOMATIC LINE BREAK (MULTILINE)

A table cell may contain text that is much longer than the available cell size, or text with carriage returns. An end user can change the table display: he can decide to convert a single-line table into a multiline table, and be able to see the entire text this way.

Product	Description
Sofa	Convertible angle sofa LEMINDA in black leather. Take advantage of this beautiful sofa that will please you with its comfort and modern style.
Sofa	Angle sofa TINTANA in luxury leather from Italy. Take advantage of this beautiful sofa that will please you with its comfort and modern style.
Sofa	Angle sofa MELINO in luxury brown fabric. Take advantage of this beautiful sofa that will please you with its comfort and modern style.
Sofa	3-seat sofa BEPIGNA luxury leather Venesettini. Take advantage of this beautiful sofa that will please you with its comfort and modern style.
Sofa	2-seat or 3-seat sofa KEZA with light wood. Take advantage of this beautiful sofa that will please you with its comfort and modern style.
Coffee table	Coffee table MANILLE in glass and black wood. Take advantage of this beautiful coffee table that will please you with its comfort and modern style.

Single line table the text is truncated on the right

Product	Description
Sofa	Convertible angle sofa LEMINDA in black leather. Superb sofa with beautiful desing and comfort. Convertible feature very useful, easy opening and closing. - Luxury leather, thickness between 1.3 and 1.5 mm. - Chrome fitting
Sofa	Angle sofa TINTANA in luxury Italian leather. Ecru. Take advantages of this beautiful sofa that will please you with its comfort and modern style.

Table converted to multiline format: the entire text is displayed

Benefit provided by this version 18 new feature:
The end user can easily read the cells' content.

160 new feature WD WB WM

NEW AAF: PASSWORD ENTRY, IN CLEAR

Usually when entering a password, the characters entered are masked by a generic character in the control. Now, a new trend is to display the characters in clear on the screen (there aren't usually ill-intentioned people standing behind you). This allows users to check that they've typed the right characters.



The user chooses (or not) to display the password in clear

Benefit provided by this version 18 new feature:
Easier password entry in secure environment.

161 new feature WD WB WM

NEW AAF: SEARCH IN MENU AND WINDOW CAPTIONS

When a user discovers a new rich interface, he may want to quickly find a specific piece of information, such as the name of a control to enter, or a collapsed menu option.

This new AAF allows him to instantly find what he's looking for!

Benefit provided by this version 18 new feature:
The end user find his choices faster.

162 new feature WD WB WM

NEW AAF: EXPAND ALL THE BRANCHES OF A TREE

In a treeview or a tree-like table, branches are expanded one by one.

In some cases the end user wants to see the entire tree.

This new AAF allows you to do this in one click!

Benefit provided by this version 18 new feature:
The user sees the entire content in one click.

163 new feature WD WB WM

NEW AAF: STORE TODAY'S

In a Date type control, you can already store a given date. Now you can store the fact that it is today's date that must be displayed by default.

Benefit provided by this version 18 new feature:
Input without any room for error.

164 new feature WD WB WM

NEW AAF: COPY A COLUMN'S CONTENT

In a visualization table, the user can currently copy a cell, a row or the entire table.

With version 18, the user can now also copy a column only.

Benefit provided by this version 18 new feature:
Easy column copy.

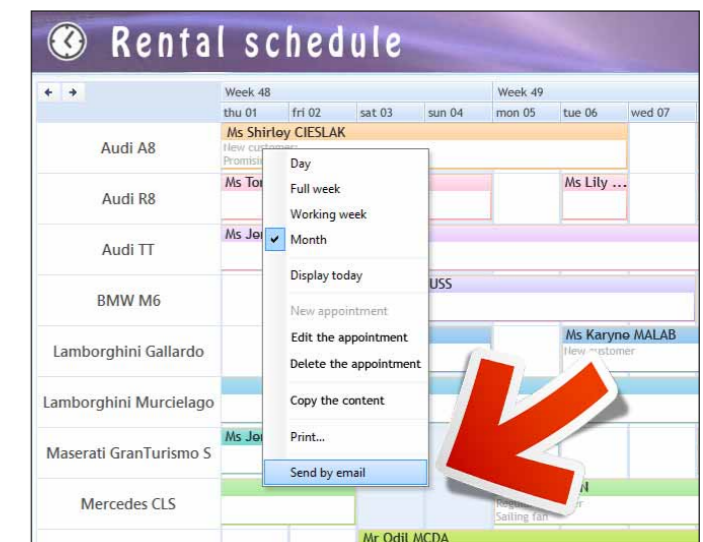
165 new feature WD WB WM

NEW AAF: SEND THE SCHEDULE VIA EMAIL

An application can display a schedule. In version 18, the end user can directly send this schedule via email, for a given set of dates of his choice.

The schedule will be attached to the email as a PDF document.

As with all AAF, this feature can be disabled by programming.



The end user can send the schedule via email, no coding for the developer!

Benefit provided by this version 18 new feature:
Information is more easily shared.

INSTALLER

166 new feature WD WB WM

INSTALLATION FROM THE CLOUD

In version 18 it is possible to put a reference install in the cloud (in one click).

This way all your authorized users can install and update their applications from anywhere in the world, without you having to worry about anything!

Note that it is also possible to place your HyperFileSQL Client/Server databases in the cloud.

Benefit provided by this version 18 new feature:
Easy installations and updates for distributed teams.

167 new feature WD WB WM

INSTALL SIGNATURE

Version 18 lets you sign the installs created with WINDEV. Just select a certificate in the setup creation wizard. The integrity of the installation pack is guaranteed.



In version 18 your installs can easily be signed

Benefit provided by this version 18 new feature:
The user is reassured about the installation: he knows the program's publisher!

JAVA



168 new feature WD WB WM

SUPPORT FOR THE IMAGE TYPE

The WLanguage `Image` type is supported in Java: programming of images and photos is much faster.

Benefit provided by this version 18 new feature:
Increased speed.

169 new feature WD WB WM

AUTOMATIC PHOTO ORIENTATION

A Java application now displays a photo based on the orientation (portrait or landscape) in which the photo was taken (uses the file's Exif information).

Benefit provided by this version 18 new feature:
No more neck ache for the user!

170 new feature WD WB WM

SUPPORT FOR HTRANSACTION

The `hTransaction` functions are supported with HyperFileSQL Client/Server, SQL Lite, MySQL, SQL Server.

Benefit provided by this version 18 new feature:
Transaction programming is more consistent.

171 new feature WD WB WM

HYPERFILESQL: SUPPORT FOR UNICODE ITEMS

The Unicode type HyperFileSQL items are supported in version 18 (support for non Latin character sets, since each character is coded on 2 bytes).

Benefit provided by this version 18 new feature:
Support for non-Latin character sets.

172 new feature WD WB WM

SUPPORT OF THE PROJECT'S LINGUISTIC OPTIONS (MASKS, DATES, ETC.)

A WINDEV project can define the formats to use to display dates, currency type control masks, etc... Depending on the applications, these parameters can be different from the operating system's ones. A Java application developed in version 18 takes these parameters into account.

Benefit provided by this version 18 new feature:
Increased customization of Java applications.

173 to 190 new feature WD WB WM

18 NEW FUNCTIONS AVAILABLE IN JAVA

Java gets 18 new WLanguage functions:

StringReverse	ChronoReset	dLoadImage	dCopyScreenImage
dCrop	dMerge	dEncrustColor	GetGUID
InWinRTMode	fBuildPath	HDuplicateRecord	HTransactionStartt
HTransactionEnd	NoRightCharacter	NoLeftCharacter	WeekToDate
Truncate	UTF8ToAns	UTF8ToUnicode	

Benefit provided by this version 18 new feature:
More use for your existing code.

MAC

191 new feature WD WB WM

ALL THE NEW JAVA FEATURES

All the new Java features are of course available for building Mac applications.

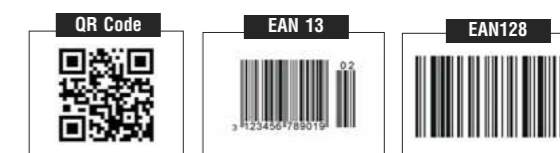
Benefit provided by this version 18 new feature:
Much more powerful Mac applications!

NATIVE LINUX



192 new feature WD WB WM

BAR CODE CONTROLS



Bar codes can now be displayed and printed in Linux applications using the `iPrintBarcode` functions or using a PDF report. The supported formats are: QR, UPCA, UPCE, EAN13, EAN8, EAN128, CODE128, CODE39, CODE93, CODE11, CODE128, Interved 2 of 5, CODABAR, CB_MSI, Datamatrix, PDF417,...

Benefit provided by this version 18 new feature:
Bar codes under Linux.



Support for images and photos has become stronger in version 18.

DEVELOP

10 TIMES

FASTER



INCLUDING THE .WDL LIBRARY IN THE EXECUTABLE

A new option offered when generating the Linux executable allows you to integrate the .WDL library directly into the executable.

This allows you to reduce the number of files to deploy.

Benefit provided by this version 18 new feature:
Reduces the number of files to deploy.

FTP FUNCTIONS

The **FTP** family of functions is available on Linux. File transfer is simpler.

Benefit provided by this version 18 new feature:
Programming file transfers under Linux is simple.

64-BIT EXE CONSOLE

In version 18, you can now create 64-bit Linux executables, in addition to the 32-bit executable.

Benefit provided by this version 18 new feature:
Better support for 64-bit Linux.

64-BIT DAEMONS

In version 18, you can create 32-bit and 64-bit daemons for Linux.

Benefit provided by this version 18 new feature:
Daemon creation in Linux.

78 NEW FUNCTIONS AVAILABLE FOR LINUX

Linux programming gains 78 new WLanguage functions in version 18:

BufferToInteger	Extracts a coded integer into a binary buffer at a given position
BufferToReal	Extracts a coded real into a binary buffer at a given position
CalendarPosition	Returns the month displayed in a Calendar control..
CalendarSelect	Returns the date selected in a Calendar control.
CalendarSelectMinus	Deselects a date in a multi-selection Calendar control.
CalendarSelectOccurrence	Returns the number of days selected in a Calendar control.
CalendarSelectPlus	Selects a date in a Calendar control.
CharactTypeOccurrence	Returns the number of characters matching the informa-

CharactType	Returns information about the type of a character.
StringInsert	Inserts a character string into another one
ControlEnabled	Ungrays a control or a group of controls found in a window. During this operation, an animation can be performed on the controls.
ControlAlias	Identifies, modifies or restores the file link of a control or group of controls.
ControlPopupOwner	Identifies the control on which the popup menu was opened.
ControlCurrent	Returns the name of the control currently in edit.
ChronoReset	Reset the stopwatch to zero
dbgError	Triggers an assert or a test error
DecimalToSexagesimal	Returns the decimal angle in degrees corresponding to a sexagesimal angle.
dModifyOpacity	Modifies an image's opacity
SwapLine	Swaps two rows in an array
InWinRTMode	Returns True if in WinRT mode
ErrorWithTimeout	Displays an error message in a system error window for a specific amount of time
ExtractLine	Extracts a line from a string
fAddBuffer	Adds a buffer's content at the end of a file
fAddText	Adds the content of a character string at the end of a file.
FTPAttribute	Identifies the attributes of a file found on an FTP server (File Transfer Protocol).
FTPConnect	Connects the current computer to an FTP server (File Transfer Protocol).
FTPDate	Returns the different dates (creation, modification or access) associated with a file found on an FTP server (File Transfer Protocol).
FTPDisconnect	Closes the connection between the current computer and the FTP server (File Transfer Protocol).
FTPSend	Transfers a file or directory to an FTP server (File Transfer Protocol).
FTPTime	Returns the various times (creation, modification or access) associated with a file found on an FTP server (File Transfer Protocol).
FTPListFile	Lists the files (and/or the directories) found in a directory of an FTP server and returns the number of listed files (and/or directories).
FTPName	Returns the name of the last file accessed by an FTP function (File Transfer Protocol).
FTPGet	Transfers a file or a directory from an FTP server (File Transfer Protocol) to the current computer.
FTPRenameFile	Renames or moves a file found on an FTP server (File Transfer Protocol).
FTPMakeDir	Creates a directory on an FTP server (File Transfer Protocol).
FTPCurrentDir	Identifies or modifies the current directory on an FTP server (File Transfer Protocol).
FTPRemoveDir	Deletes a directory and its content (files and sub-directories) from an FTP (File Transfer Protocol) server.
FTPDeleteFile	Deletes a file from an FTP server (File Transfer Protocol).
FTPSize	Returns the size (in bytes) of a file found on an FTP server (File Transfer Protocol).
gToText	Deletes the graphic elements from a character string that uses gLink, gImage, ...
HDuplicateRecord	Duplicates the record read in a data file
HListFullTextIndex	Returns the list of full-text indexes for a file (a query or a view) recognized by the HyperFileSQL engine.
HNotifAddCCRecipient	Adds recipients for the notifications sent via the WDBal messaging tool.
HNotifAddEmailRecipient	Adds recipients for the notifications sent by email.
HNotifConfigure	Configures the SMTP server and/or the Control Center used to send notifications.
HNotifListCCRecipient	Lists the notification recipients via the WDBal messaging

HNotifListEmailRecipient	Returns the list of recipients for a notification by email.
HNotifDeleteCCRecipient	Deletes the recipients of a notification sent via the WDBal messaging tool
HNotifDeleteEmailRecipient	Deletes the recipients of an email notification
HRSAddConfig	Adds a replication between two HyperFileSQL servers
HRSInit	Initializes a replication between two HyperFileSQL servers
HRSListConfig	Lists the replications available on a server.
HRSModifyConfig	Used to modify some parameters of an existing replication between two HyperFileSQLs servers.
HRSDeleteConfig	Deletes a replication between two HyperFileSQL servers.
iPrintBarCode	Prints a bar code (inside a rectangle).
iPrintPDF	Prints the content of a PDF file
InfoWithTimeout	Displays an information message in a system information window for a set amount of time
iColumnNum	Returns the column number of the current column in a multi-column report.
iColumnEnd	Forces a column break in a multicolumn report.
BankHoliday	Indicates whether a day is a bank holiday or not.
BankHolidayAdd	Indicates that a day (or a list of days) is a holiday.
BankHolidayDeleteAll	Clears the list of all bank holidays.
NumberToString	Coonverts a number into words "for checks"
PropertyExist	Returns True if a property exists
RestartProgram	Ends the application and restarts it.
NoRightCharacter	Deletes the given characters at the end of the string
NoLeftCharacter	Deletes the given characters at the beginning of the string
SexagesimalToDecimal	Returns the decimal angle in degrees corresponding to a sexagesimal angle.
SQLTable	Transfers the result of a query to a memory table (or list box or combo box), with possibility of Partial Fetch (the result is retrieved by blocks of lines).
ArraySwapLine	Swaps two rows in an array
ArrayReverse	Reverses the content of a one-dimensional array
TableRestorePositionAndSelection	Restores the position of the scrollbar in a table as well as the selected elements..
TableSavePositionAndSelection	Saves the position of the table scrollbar as well as the selected elements.
TableSelectToFile	Positions on the HyperFileSQL record corresponding to the row selected in a multi-selection browsing table.
TableDeleteSelect	Deletes the selected elements from a table.
Truncate	Truncates a string
UTF8ToAnsi	Converts a UTF8 string to Ansi
UTF8ToUnicode	Converts a UTF8 strings to Unicode

WLANGUAGE 88 NEW FUNCTIONS

THE NEW FUNCTIONS AVAILABLE IN WINDEV

WLanguage gains 88 new functions:

AnimationCancel	Cancels the current animation and the animations prepared by AnimationPrepare.
BufferToInteger	Extracts a coded integer into a binary buffer at a given position
BufferToReal	Extracts a coded real into a binary buffer at a give position
StringInserts	Inserts a character string into another one
ControlInfoXY	Returns information on the control at a given position
ControlHighlightSearch	Highlight the caption of the control containing the text to find
ControlTypeInfo	Retrieves an image corresponding to a type of control
ChronoReset	Reset the stopwatch to zero
dbgError	Triggers an assert or a test error
DecimalToSexagesimal	Returns the decimal angle in degrees corresponding to a sexagesimal angle.
dModifyOpacity	Modifies an image's opacity
SwapLine	Swaps two rows in an array
InWinRTMode	Returns True if in WinRT mode
ErrorWithTimeout	Displays an error message in a system error window for a specific amount of time
ExtractLine	Extracts a line from a string
fAddBuffer	Adds a buffer's content at the end of a file
fAddText	Adds the content of a character string at the end of a file.
ffind	Finds a character string or a buffer in a file opened by fOpen(?).
fScanFile	Allows you to be notified in case a window is modified
fScanDirectory	Allows you to be notified in case a directory is modified
GeneratePassword	Generates an automatic password
gpwEnumControl	Lists controls from a window or a page, whose state (invisible, grayed, disabled) can be modified by the user groupware
grRotation	Lets you rotates a surface chart on one of its axes
grSurfaceAddData	Adds a point to trace on a surface chart



Quick,
my version 18!

grSurfaceAltitudeColor Lets you specify the colors for the various Z levels of a surface chart.

grSurfaceMesh Enables or disables the gridline on a surface chart

grSurfaceGridlines Lets you adjust the gridline for the various planes of a surface chart

grSurfaceDeleteAltitudeColor Lets you delete the Z levels color specified with grSurfaceAltitudeColor

gToText Deletes the graphic elements from a character string that uses gLink, gImage,...

HDuplicateRecord Duplicates the record read in a data file

HNotifAddCCRecipient Adds recipients for the notifications sent via the WDBal messaging tool.

HNotifAddEmailRecipient Adds recipients for the notifications sent by email.

HNotifConfigure Configures the SMTP server and/or the Control Center used to send notifications

HNotifListCCRecipient List of notification recipients via the WDBal messaging tool.

HNotifListEmailRecipient Returns the list of recipients for a notification by email.

HNotifDeleteCCRecipient Deletes the recipients of a notification sent via the WDBal messaging tool

HNotifDeleteEmailRecipient Deletes the recipients of an email notification

HRSAddConfig Adds a replication between two HyperFileSQL servers.

HRSInit Initializes a replication between two HyperFileSQL servers

HRSListConfig Lists the replications available on a server.

HRSModifyConfig Used to modify some parameters of an existing replication between two HyperFileSQLs servers.

HRSDeleteConfig Deletes a replication between two HyperFileSQL servers.

iPrintHTML Prints HTML content

iPrintPDF Prints the content of a PDF file

iPrintRTF Prints RTF content

iPrintZoneHTML Prints HTML content into a zone

InfoWithTimeout Displays an information message in a system information window for a set amount of time

NumberToString Converts a number into words

PVTAxisX Specifies the dimension of the OLAP cube on the X axis

PVTAxisY Specifies the dimension of the OLAP cube on the Y axis

PVTCalculateUpdate Partially recalculates the OLAP cube

PVTCalculateAll Recalculates the entire OLAP cube

PVTLoad Loads the result of an OLAP cube calculations from the disk.

PVTFilter Filters the dimensions displayed in an OLAP cube

PVTSave Saves the results of an OLAP cube calculation on the disk.

OpenSSLCheck Checks using a public key that the data signature is valid

PropertyExist Returns True if a property exists

RibbonEndExpandedMode Collapses a ribbon that is temporarily expanded

RibbonHighlightPane Highlight the top of a ribbon found in a pane.

NoRightCharacter Deletes the given characters at the end of the string

NoLeftCharacter Deletes the given characters at the beginning of the string

WeekToDate Returns the date for the Monday in the week of a given year

SexagesimalToDecimal Returns the decimal angle in degrees corresponding to a sexagesimal angle.

ArraySwapLine Swaps two rows in an array

ArrayReverse Reverses the content of a one-dimensional array

TableFilteredColumn Returns the list of columns filtered by the user (AAF use)

TableSwapLine Swaps two rows in a table.

TableChildCount Returns the number of children in a treeview table

TableDeleteSelect Deletes the selected elements from a table.

TextToRTF Creates an RTF string from a text

TimelineAddEvent Adds an event into a TimeLine control

TimelineAddTrack Adds a new track in a Timeline control

TimelineChangeMode Modifies the period displayed in a Timeline control.

TimelineListEvent Lists the events of a Timeline control

TimeLineDeleteEvent Deletes an event from a TimeLine control

TimelineDeleteAll Deletes all the events and all the tracks of a Timeline control

Truncate Truncates a string

UTF8ToAnsi Converts a UTF8 string to Ansi

UTF8ToUnicode Converts a UTF8 strings to Unicode

WiFiActivate Enables or disables Wi-Fi on the device.

WiFiAddNetwork Adds a new network to the list of networks configured on the device.

WiFiConnect Connects the device to the specified Wi-Fi network.

WiFiDetectAccessPoint Starts detecting the Wi-Fi access points currently accessible from the device.

WiFiStatus Returns the current activation status of Wi-Fi on the device or asks to be notified when the activation status of Wi-Fi changes.

WiFiConnectionInfo Returns the requested information about the current Wi-Fi connection of the device.

WiFiListNetwork Returns the list of networks currently configured on the device.

WiFiDeleteNetwork Deletes a network from the list of networks configured for the device.

mIzAddLine Adds a new dynamic line into a multiline zone.

mIzInsertLine Inserts a new dynamic line into a multiline zone.

mIzDelete Deletes a dynamic line from a multiline zone.

mIzDeleteAll Deletes all the dynamic lines from a multiline zone.



ENVIRONMENTAL POLICIES

When PC SOFT prints "paper" documents, PC SOFT, the paper supplier or the printer, (FSC - Forest Stewardship Council - certified and PEFC - Program for the Endorsement of Forest Certification - certified) replants as many trees as used for the printing. The FSC label was created by the FSC NGO, which includes among others Greenpeace, Friends of the Earth and the WWF. For example printing 100,000 copies of a 68-page documentation on glossy paper consumes 10 trees: PC SOFT or the

printer has 10 trees replanted immediately. Also, we favor pulp coming mainly from recycled wood (from furniture mills for instance) and from controlled forest clearing. Also our products are available without packaging or paper documentation on request. A license for 10 developers can be supplied upon request with only 2 sets of paper documentation for instance.



WINDEV Mobile

363 new feature W D W B W M

118 COMMON NEW FEATURES

WINDEV Mobile 18 benefits from all the common new features of version 18. You benefit from the new controls, from the evolution of the controls, from the evolution of WLanguage, from the evolutions of HyperFileSQL, ... The global development environment is even more efficient, more friendly, and on top of recent evolutions.

364 new feature W D W B W M

COMMON IOS/ANDROID SKIN TEMPLATES: MAKES MULTI-TARGET DEVELOPMENT EASIER

In order to ensure better portability of your applications between iOS (iPhone, iPad) and Android devices, 2 specially adapted skin templates are provided. By using one of these skin templates, you optimize the graphic compatibility of your applications.

NATIVE IOS: IPHONE, IPAD



iPhone, iPad, Android, Windows Phone, Windows Mobile... : all the devices on all the systems are supported by WINDEV Mobile 18



Benefit provided by this version 18 new feature:
The development of portable mobile applications has never been simpler!

NEW CONTROLS SUPPORTED ON IOS IN VERSION 18

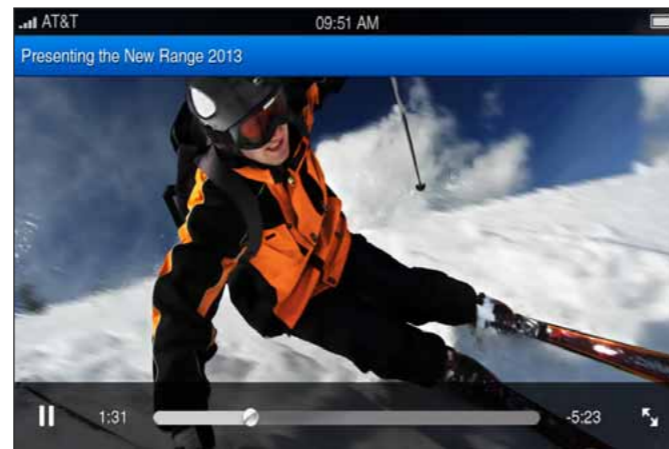
Version 18 of WINDEV Mobile offers new controls useful for developing professional applications on iOS:

- Map
- Multimedia
- Calendar

These controls are in addition to the already existing ones.

Benefit provided by this version 18 new feature:

You have access to additional controls, giving you more opportunities for customization.



Playing a video is very easy!

Benefit provided by this version 18 new feature:
On demand video!

CONSTANT FEATURE ADDITIONS

PC SOFT's software constantly evolve. You can often pick up new features during a routine update, in-between versions.

During the intermediate updates of the previous WINDEV Mobile version, a lot of new features have been provided for iOS: **Image** function, window opening animation, multiline areas, alternate text on edit controls, decoding of QR code using the **BCCapture** and **BCDecode** functions, **Html** control, hourglass, **sound** functions, internal window, **zip** functions, **recorder** functions, native calls, **EmailRunApp** and **EmailOpenMail**, breaks on loopers, native radio button, vibrate functions, **tapiDialerCall** function, configure the button on the right of the keyboard, date/time control in the form of a band, object oriented programming.

Benefit provided by this version 18 new feature:

Ever increasing possibilities.

SUPPORT FOR IPHONE 5 AND IOS 6

The iPhone 4 had a screen resolution of 640 x 960 pixels. The iPhone 5 offers a resolution of 640 x 1,136 pixels.

Thanks to the window anchoring technology for windows created with WINDEV Mobile, the windows developed for an iPhone 4 screen size come up and automatically adapt to an iPhone 5 display, without any black band.

iOS6 is of course supported.

Benefit provided by this version 18 new feature:

Better interoperability.

NEW MULTIMEDIA CONTROL

The new Multimedia control lets you play a video in one of the formats supported by the iPhone.

The standard iOS buttons can be displayed and enabled: pause, play, volume setting, ...

NEW MAP CONTROL

The Map control is used to display a map in the formats supported by the iPhone (Google Maps and Apple maps of iOS 6). The map displayed can be used in your applications, markers can be set, the display mode (map or satellite) can be changed, etc.



Locations on a map

Benefit provided by this version 18 new feature:
Maps on the go!

CONTACT ACCESS

The WLanguage **Contact** family of functions lets you read, write and modify the contacts found on a device.

The application can also use the phone's native interface to allow the selection and modification of a contact.

Benefit provided by this version 18 new feature:

Your applications use the end user's data.

NEW CALENDAR CONTROL

The Calendar control makes it easier to select a date or a set of dates.



The new Calendar control

Benefit provided by this version 18 new feature:
The selection of a set of dates is easier.

DEPLOY ON THE APPLE STORE



Your applications can be deployed via the Apple Store (after validation of the application by Apple), or directly to the mobile device (In House and Ad Hoc).

Benefit provided by this version 18 new feature:

Deploy the way you want.

MULTITOUCH ON THE IMAGE CONTROL

Multitouch is automatically supported on Image controls.

An image can be resized and moved by a finger gesture. The following new events have been added: **Scroll**, **Inertial scroll**, **Moved**, **Touched**, **Released**.

Benefit provided by this version 18 new feature:

Your applications are even more intuitive.

WINDOW SCROLLING GESTURE

Going from one (internal) window to another is now possible with a finger gesture.



Benefit provided by this version 18 new feature:
Friendly operations for the user.

MULTITOUCH ON HTML CONTROLS

You can zoom in HTML type controls.

This feature can be disabled by programming.

Benefit provided by this version 18 new feature:

New possibilities for the end user.

128 NEW WLANGUAGE FUNCTIONS SUPPORTED FOR IOS (IPHONE, IPAD)

128 new WLanguage functions are being introduced for iOS in version 18.

Non exhaustive list of supported new WLanguage functions:

BufferToInteger	BufferToReal	CalendarPosition	CalendarSelect
CalendarSelectMinus	CalendarSelectOccurrence	CalendarSelectPlus	MapDisplayPosition
MapAddMarker	MapEndOfMove	MapInfoPosition	MapInfoXY
MapModifyMarker	MapGetPosition	MapFollowMovement	MapDeleteMarker
MapDeleteAll	ControlCurrent	ContactDisplay	ContactAdd
ContactSearch	ContactCreate	ContactLast	ContactEdit
ContactList	ContactListSource	ContactRead	ContactModify
ContactFirst	ContactReset	ContactSelect	ContactNext
ContactDelete	dCopyImage	DecimalToSexagesimal	dFill
InWindowsMobileMode	fAddBuffer	fAddText	FTPAttribute
FTPConnect	FTPDate	FTPDisconnect	FTPSend
FTPTime	FTPListFile	FTPName	FTPGet
FTPRenameFile	FTPMakeDir	FTPCurrentDir	FTPRemoveDir
FTPDeleteFile	FTPSize	GeneratePassword	GestureNbPointer
GestureCurrentPointer	GesturePosX	GesturePosY	gToText
HDuplicateRecord	HFreeQuery	HCheckStructure	iBorder
iChangeSubReportSource	iConfigure	iInitReportQuery	iCreateFont
iDestination	iCloseReport	iEndReport	iEndPrinting
iForceComplement	iNestedHeaderFooter	ilmahHeight	iPageHeightLeft
iPageHeightLeft	iTextHeight	iTextHeight	iTextHeight
iPrintBlock	iPrintBodyComplement	iPrintImage	iPrintWord
iPrintPDF	iPrintZone	iPrintReportQuery	iInitReportQueryConnection
ilnitSubReport	ilmageWidth	ilPageWidth	ilTextWidth
iNewLine	ilListNestedReports	ilMargin	ilMMToPica
iColumnNum	iParameterReport	iPicaToMM	iFont
iDidotFont	iXPos	iYPos	iSkipLine

iSkipPage	iReportPrintingStatus	iSubstBlock	iColumnEnd
iPageEnd	iLine	iHLine	iVLine
BankHoliday	BankHolidayAdd	BankHolidayDeleteAll	MultimediaStop
MultimediaBeginning	MultimediaDuration	MultimediaStatus	MultimediaClose
MultimediaEnd	MultimediaPlay	MultimediaOpen	MultimediaPause
MultimediaPosition	NumberToString	WeekToDate	SexagesimalToDecimal
TextHeight	TextWidth		

504 new feature W D W B W M

WINDOW CREATION WIZARD FOR IPAD

The window creation wizard is adapted for the iPad. Predefines areas are offered. An application can be optimized for the iPad automatically.
Benefit provided by this version 18 new feature:
The size of the windows is optimized for the iPad.

505 new feature W D W B W M

POPUP ON IPAD

The opening of popup windows on the iPad is now supported. You can also create non-maximized windows.
Benefit provided by this version 18 new feature:
Interface adapted for the iPad.

506 new feature W D W B W M

PDF REPORTS

Version 18 of WINDEV Mobile lets you create reports using the report editor. The report created is in PDF format. The power of reports to the service of iOS applications: bar codes, graphics, table, multi-column, etc. A report can be printed or sent via email.
Benefit provided by this version 18 new feature:
PDF reports are easy to build.

507 new feature W D W B W M

FTP FUNCTIONS

The WLanguage FTP family of functions is supported on iOS. This opens up possibilities for data and document exchange via programming.
Benefit provided by this version 18 new feature:
File transfer is easier.

508 new feature W D W B W M

ARM V7

Applications developed using WINDEV Mobile 18 take advantage of the power of the Arm v7 and higher processors.
Benefit provided by this version 18 new feature:
Code is optimized for the Arm V7 processors.

509 new feature W D W B W M

NEW EVENT: ENABLE/DISABLE APPLICATION

The new **Enable** and **Disable** application event lets you define a process when the application goes into the background and is then re-activated by the user. This allows you for instance to automatically refresh data.
Benefit provided by this version 18 new feature:
The data displayed are always up to date.

510 new feature W D W B W M

"CLOSE CHILD WINDOW" EVENT

A new event is available to facilitate programming of child windows. The **Close child window** event is called when closing a child window opened from this window. The name of the closed child window is accessed by the **My-ChildWindow..Name** variable. The returned value of the child window is retrieved via the **My-ChildWindow..ReturnedValue** variable.
Benefit provided by this version 18 new feature:
Programming is easier.

511 new feature W D W B W M

LOOPERS: EVOLUTIONS

On iPhone and iPad, finger gestures on a line (towards the right or the left) let you start a custom process or automatically bring up the "Delete" button. An option enables you to specify that the "break header" always remain visible. Horizontal loopers are being introduced for iOS.



Applications at your fingertip

Benefit provided by this version 18 new feature:
Natural interface for your applications.

PORTABILITY



Your code is compatible: Windows 8 - 64-bit Windows - 32-bit Windows - Linux - Mac - iOS - Android - Windows CE, Mobile - Windows Phone - .Net - Java - PHP - HyperFileSQL - Oracle - SQL Server - MySQL - DB2 - Informix - ...

ANDROID



In version 18, WINDEV Mobile adds increased support for Android. You can create always more powerful applications. Your applications are freely deployed, via direct installation or via the Google Play. Of course you benefit from the 118 common new features of version 18.

512 new feature W D W B W M

NEW CALENDAR CONTROL

The new Calendar control is being introduced for Android. The calendar offers a lot of functionalities:

- Single or multiple selection
- Choice of the first day displayed
- Presence of the "Today" button
- Load a month via a gesture



The new Calendar control on Android

Benefit provided by this version 18 new feature:
Choosing a date or a set of dates is easier.

MULTILINE ZONE CONTROL

The Multiline Zone control lets you place controls of different types on each line.

This allows you to customize each line, for example by offering a check box on a line to change the status, a progress bar on another line, etc.

Benefit provided by this version 18 new feature:
The presentation becomes more sophisticated.

NFC: DATA TRANSFER AND TOUCHLESS PAYMENT

NFC, acronym for Near Field Communication, lets you transfer data between two devices without touching, or a mobile device and a machine, or with a chip that can be integrated almost anywhere (in a label, in a poster or in materials...).

The NFC standard lets you read and write data. WINDEV Mobile 18 brings easy support for NFC to your applications.

The new NFC function family is being introduced.

`NFCReadTag`, `NFCWriteTag`, `NFCSendTag` and `NFCStatus` are used to manage NFC.

Thanks to this standard, it is now possible to exchange data between 2 smartphones just by having them close to each other.

This is also thanks to this standard that touchless payment can happen.

Benefit provided by this version 18 new feature:
The telephone becomes a way of paying, phones exchange data by being close, and much more!

EMBEDDED NATIVE ANDROID HYPERFILESQL

HYPERFILESQL

In version 18, HyperFileSQL is now available for the Android operating system. Your Android applications benefit from the power of HyperFileSQL.

HyperFileSQL is now available for Windows, Linux, Mac, Windows Mobile, iOS (iPhone, iPad) and Android platforms.

The format of the data files and the index files is identical, which allows for inter-system copies without any conversion.

The new feature allows for more standard and portable development for your applications.

(Android version 3.2 and higher, ARMv7 processor; for example Samsung Galaxy S3, Galaxy Tab, etc.).

Benefit provided by this version 18 new feature:
Your Android applications benefit from the power of HyperFileSQL.



NFC: touchless payment

HYPERFILESQL ANDROID CLIENT/SERVER

In version 18, access to a HyperFileSQL server can be done from an Android device.

This allows you for instance to access a company's IS from a tablet via Wi-Fi.

(Android version 3.2 and higher, ARMv7 processor; for example Samsung Galaxy S3, Galaxy Tab, etc.).

Benefit provided by this version 18 new feature:
Your Android applications benefit from the power of HyperFileSQL in Client/Server mode.

SUPPORT FOR UNICODE ITEMS IN HYPERFILESQL ANDROID

The Unicode standard lets you manage all types of characters (Russian, Chinese, ...) and therefore the non-Latin character sets. HyperFileSQL supports the Unicode standard.

Therefore you can store data in Unicode format.

Version 18 of WINDEV Mobile lets you easily handle data in Unicode format.

Unicode type items are supported natively.

Benefit provided by this version 18 new feature:
Internationalization of your Android applications is simpler.

RUN AN APPLICATION IN THE BACKGROUND

An application can be in the "foreground", visible, in use, or can be in the "background". An application in the background is by default suspended by the system (to save the battery).

But in some cases, an application's creator may want some processes to keep running even though the application is in the background, for instance to display notifications, or to play music. This is possible in version 18 thanks to the notion of "Global Threads".

Simply place the processes that need to run all the time in a procedure, and execute this procedure in a global thread.

Note that this process also runs when the device is asleep (except for the display operations, of course!).

Benefit provided by this version 18 new feature:
Your applications can run in the background.

START AN APPLICATION WHEN STARTING THE DEVICE

When generating the application, you can specify that the application must automatically start when turning on the machine.

Benefit provided by this version 18 new feature:
Saves time for the end user.

RECALL AN APPLICATION FROM A NOTIFICATION

An application running in the background can send a notification to the system.

Clicking this notification can reactivate the application.

Simply set the `WLanguage..ActivateApplication` property of the `Notification` type.

Benefit provided by this version 18 new feature:
Saves time for the end user.

WIDGET CREATION

A widget is a window that can be pinned to a home screen.

An application created with WINDEV Mobile 18 can contain one or more Widget type windows.



WINDEV Mobile 18 lets you create widgets

Benefit provided by this version 18 new feature:
Easily create widgets.

TAB CONTROL: EVOLUTIONS

Loading panes by a gesture (finger movement) is supported. A new display mode lets you display only the caption of the active pane (in the center) and the caption of the previous and next panes to the left and the right.

You can also modify the height of the zone that displays the captions, hide this zone, displays the captions at the top or bottom, customize the pane icons.

The pane's background can be an image.

Benefit provided by this version 18 new feature:
More granular pane support for Android

SELECTION IN LOOPER CONTROLS

To ensure better compatibility with WINDEV, the looper interface gains simple and multiple selection modes.

It is now possible to perform a multi-selection in a looper without any programming.

Benefit provided by this version 18 new feature:
Increased compatibility with WINDEV.

LOOPER WITH HORIZONTAL SCROLLING

In addition to the vertical mode, loopers can be displayed horizontally.

Benefit provided by this version 18 new feature:
Ever increasing possibilities for customizing your interface.

QUICK MOVEMENT AND POSITIONING IN LOOPERS

Moving and positioning within a list is now faster thanks to a scroll bar on the side of the list. In the case of a looper or a sorted list, the scroll bar can display an alphabetical index using the first letter of one of the attributes of the looper for quicker access.



The end user drives his applications with one finger

Benefit provided by this version 18 new feature:
Quick navigation through forms.

LOOPER: PROCESS STARTED BY GESTURE



The end user drives his applications with one finger

On some phones, when the list of contacts is displayed, sliding a finger from right to left on the contact name starts a call, and sliding from left to right lets you enter a message.

In a looper, a finger gesture on a line from right to left or left to right lets you start a given process.

Benefit provided by this version 18 new feature:
The end user has access to intuitive operations.

MOVE LINES BY GESTURE ON A LOOPER

In the same looper, the end user can now move an element via a gesture: keep the finger pressed on the element, then move it.

Benefit provided by this version 18 new feature:
The end user can use a touch interface.

LOOPER CONTROL CREATION WIZZARD

To easily create loopers, a wizard is available on Android to facilitate the positioning of the controls.

Benefit provided by this version 18 new feature:
Creating sophisticated loopers becomes easier.

LOAD IMAGES IN BACKGROUND TASKS

An option of the `Image` control lets you load the image in a background task. For example if the image to display must be found on a site, the application doesn't wait until the entire image is loaded to continue.

A "loading" animation is automatically displayed in the image control if needed.

End user operations are more fluid.

Benefit provided by this version 18 new feature:
Image display is no longer blocking for the application.

ACCESS TO THE PHONE DIRECTORY

Android applications can now directly access the content of the contact directory of the device.

Read and write functions are available.

An application can create, modify and delete appointments (events).

These functions also allow you to develop a synchronizing application for data of various origin (Outlook for instance) and a phone's data.

Benefit provided by this version 18 new feature:
This functionality opens a large number of opportunities.

OPEN A COMBO BOX BY PROGRAMMING

The `ComboOpen` function lets you open a combo box via programming.



Switching to the next window with a finger gesture

Benefit provided by this version 18 new feature:
The end user intuitively navigates between the forms.

DISPLAY PHOTOS ACCORDING TO THEIR ORIENTATION

By default, a photo is displayed in the right orientation (portrait or landscape). The `Exif` data of the photo are automatically analyzed for this positioning.

Benefit provided by this version 18 new feature:
Photos are always properly oriented when displayed

PRINT FUNCTIONS GOOGLE CLOUD PRINT

The `GglPrintDocument` function lets you print an existing document via Google's cloud print.



Benefit provided by this version 18 new feature:
Document printing is easy.

MENU OPENING VIA PROGRAMMING

The `OpenMainMenu` function lets you expand the main menu by programming.

Benefit provided by this version 18 new feature:
Your applications' interface can be further customized.

CHANGING THE CONTENT OF A WINDOW BY GESTURE

Browsing through internal windows with a finger gesture is available in version 18. Going to the next record in a database can be accomplished with a simple gesture!

"CLOSE CHILD WINDOW" EVENT

In the code editor, a new element is available to facilitate the programming of child windows.

The `Close child window` event is called when closing a child window opened from this window.

The name of the closed child window is accessed by the `My-ChildWindow..Name` variable.

The returned value of the child window is retrieved via the `My-ChildWindow..ReturnValue` variable.

Benefit provided by this version 18 new feature:
Programming is easier.

AUTOMATIC RESOURCE EXTRACTION

The application's installation file (.APK file) can contain additional elements other than the program, such as HyperFileSQL data files. The `fExtractResource` function lets you extract and install these additional elements on the device.

A new parameter of the setup wizard lets you specify that the extraction must be done automatically the first time the application is run.

Benefit provided by this version 18 new feature:
Reduction of the number of operations during the installation.

CUSTOMIZE THE VIRTUAL KEYBOARD

The Android virtual keyboard comes up when entry is needed. A button from this keyboard can be customized: this button is called "action button".

The detail window of the edit control's 7-tab lets you customize this action button with the text you want, or with an image chosen from the list provided.



Here a magnifying glass is displayed for a search...



... and here a send button

Benefit provided by this version 18 new feature:
Your applications are customized.

SPLASH SCREEN WHEN STARTING THE APPLICATION

A splash screen can be automatically displayed when starting the application.

Several parameters can be used to customize the launching of the splash screen.

Benefit provided by this version 18 new feature:
Applications make an entrance!

MULTILINGUAL SUPPORT IN APPLICATIONS

When an application is distributed in several countries, its name may change depending on the country.

Version 18 of WINDEV Mobile automatically supports the management of these different names.

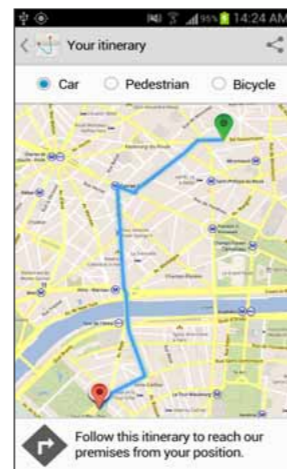


The application has a different name depending on the country

Benefit provided by this version 18 new feature:
Simplification of the creation of multilingual applications.

CREATE AN ITINERARY ON THE MAP CONTROL

On a Google map, the `MapAddItinerary` function lets you easily define an itinerary.



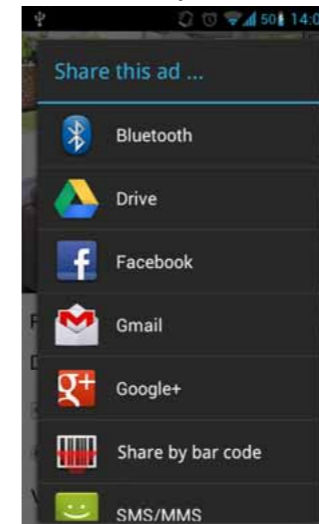
The itinerary is drawn by the WINDEV Mobile 18 application

Benefit provided by this version 18 new feature:
Map customization.

SHARING FUNCTIONS (EMAIL/SMS/FACEBOOK, ETC.)

A window allowing you to share content via social media can be displayed automatically.

Selecting the social media is easily done.



Users can share, and the developer has no additional work!

Benefit provided by this version 18 new feature:
End users easily share.

DISPLAY A MENU IN THE ACTION BAR

Pressing longer on a control can bring up a popup menu. In version 18, the popup menu comes up in the Action Bar.

Benefit provided by this version 18 new feature:
Support for the new use standards.

PREVENT THE DEVICE FROM GOING TO SLEEP

The `sysStandby` function lets you prevent a device from going to sleep.

A parameter lets you authorize or not the device to go to sleep depending whether it is connected to the power or running on batteries. Therefore an application can remain active and visible all the time or during the amount of time allowed.

Benefit provided by this version 18 new feature:
The phone doesn't go to sleep anymore while the application is processing!

IMAGE VARIABLE

The `Image` type is available on Android. This allows you to easily manage images by programming: resizing, apply a filter, overlay, re-framing, ...



With version 18, your teams build innovative applications in the medical field

Benefit provided by this version 18 new feature:
Programming is simpler, clearer, execution is faster.

546 new feature WD WB WM

ALBUM ACCESS (PHOTOS AND VIDEOS)

The `AlbumSave` and `AlbumPicker` functions let you select and save photos and videos on the device.

Benefit provided by this version 18 new feature:
Photo and video management is simple.

547 new feature WD WB WM

ANIMATIONS

An animation is a change of position or property for one or more controls.

The `AnimationPrepare` function lets you specify the concerned controls, the properties to modify and the modifications to make. Once all the preparations have been made, the `AnimationPlay` function lets you trigger all the animations.

Benefit provided by this version 18 new feature:
Interfaces are more lively!

548 new feature WD WB WM

FUNCTION FOR GETTING A DEVICE'S UNIQUE IDENTIFIER

Each Android device (phone, tablet) has a unique number embedded by the manufacturer (the ROM provider specifically).

The `sysIdentifier` function lets you read this number. This number can be used to increase an application's security: an application can be set to work only on set devices. This number can also be used to protect the unauthorized distribution of applications.

Benefit provided by this version 18 new feature:
Each device can easily be identified by an application.

549 new feature WD WB WM

GOOGLE PLAY IS YOUR FRIEND



Applications created with WINDEV Mobile 18 can be distributed for a fee or for free via Google Play (formerly known as Android Market). If you charge for your applications, you generate revenue for each sale.

Benefit provided by this version 18 new feature:
Distribute your free or paying applications on the Google Play store.

550 new feature WD WB WM

SUPPORT FOR HTRANSACTION

The `hTransaction` functions are supported by HyperFileSQL Client/Server Android and SQL Lite.

Benefit provided by this version 18 new feature:
Transaction programming is more consistent.

551 new feature WD WB WM

ENABLE/DISABLE APPLICATION

The new `Activate` and `Deactivate` application event lets you define a process when the application is in the background or reactivated by the user.

This allows you for instance to automatically refresh data.

Benefit provided by this version 18 new feature:
The data displayed are always up to date.

552 to 609 new feature WD WB WM

58 NEW WLANGUAGE FUNCTIONS FOR ANDROID

Android gains 118 new WLanguage functions (58 new general functions, and 60 new HyperFileSQL functions):

<code>AlbumSave</code>	<code>AlbumPicker</code>	<code>AnimationCancel</code>	<code>AnimationPlay</code>
<code>AnimationPrepare</code>	<code>CalendarPosition</code>	<code>CalendarSelect</code>	<code>CalendarSelectMinus</code>
<code>CalendarSelectOccurrence</code>	<code>CalendarSelectPlus</code>	<code>MapAddItinerary</code>	<code>MapDeleteItinerary</code>
<code>StringReverse</code>	<code>ChronoReset</code>	<code>ComboOpen</code>	<code>dLoadImage</code>
<code>dCrop</code>	<code>dMerge</code>	<code>dEncrustColor</code>	<code>GetGUID</code>
<code>dFill</code>	<code>InWinRTMode</code>	<code>fBuildPath</code>	<code>Gg(Print)Document</code>
<code>HActivateFilter</code>	<code>HAdd</code>	<code>HAlias</code>	<code>HCancelAlias</code>
<code>HCancelDeclaration</code>	<code>HCancelSeek</code>	<code>HLinkMemo</code>	<code>HForward</code>
<code>HLockRecNum</code>	<code>HChangeKey</code>	<code>HChangeConnection</code>	<code>HChangeName</code>
<code>HChangeDir</code>	<code>HBuildKeyValue</code>	<code>HCopyRecord</code>	<code>HCreation</code>
<code>HCreationIfNotFound</code>	<code>HUnlockRecNum</code>	<code>HDescribeConnection</code>	<code>HLast</code>
<code>HDeactivateFilter</code>	<code>HDuplicateRecord</code>	<code>HOut</code>	<code>HError</code>
<code>HErrorLock</code>	<code>HErrorDuplicates</code>	<code>HErrorInfo</code>	<code>HErrorIntegrity</code>
<code>HErrorPassword</code>	<code>HExecuteQuery</code>	<code>HExecuteSQLQuery</code>	<code>HExtractMemo</code>
<code>HClose</code>	<code>HCloseConnection</code>	<code>HFilter</code>	<code>HFilterStartsWith</code>
<code>HFilterContains</code>	<code>HFilterIdentical</code>	<code>HFlush</code>	<code>HFreePosition</code>
<code>HFreeQuery</code>	<code>HListConnection</code>	<code>HListItem</code>	<code>HRead</code>
<code>HReadLast</code>	<code>HReadPrevious</code>	<code>HReadFirst</code>	<code>HReadSeek</code>
<code>HReadSeekLast</code>	<code>HReadSeekFirst</code>	<code>HReadNext</code>	<code>HMode</code>
<code>HModify</code>	<code>HNbRec</code>	<code>HRecNum</code>	<code>HOpen</code>
<code>HOpenConnection</code>	<code>HPass</code>	<code>HGetCurrentPosition</code>	<code>HPrevious</code>
<code>HFirst</code>	<code>HReset</code>	<code>HSeek</code>	<code>HSeekLast</code>
<code>HSeekFirst</code>	<code>HBackward</code>	<code>HRetrieveRecord</code>	<code>HRestorePosition</code>
<code>HSavePosition</code>	<code>HNext</code>	<code>HDelete</code>	<code>HTransactionStart</code>
<code>HTransactionEnd</code>	<code>HFound</code>	<code>HCheckStructure</code>	<code>HVersion</code>
<code>NFCWriteTag</code>	<code>NFCSendTag</code>	<code>NFCStatus</code>	<code>NFCReadTag</code>
<code>OpenMainMenu</code>	<code>AppointmentAdd</code>	<code>AppointmentModify</code>	<code>AppointmentReset</code>
<code>AppointmentDelete</code>	<code>NoLeftCharacter</code>	<code>NoLeftCharacter</code>	<code>WeekToDate</code>
<code>SysStandby</code>	<code>Truncate</code>	<code>UTF8ToAnsi</code>	<code>UTF8ToUnicode</code>
<code>mIzAddLine</code>	<code>zmlInsertLine</code>	<code>zmlDelete</code>	<code>zmlDeleteAll</code>

WINDOWS 8 NEW GRAPHIC INTERFACE



610 new feature WD WB WM

WINDOWS 8 NEW INTERFACE: LIST OF SUPPORTED FILES

For applications in "desktop" mode, the mode we're familiar with from Windows 7, nothing changes for the applications. For applications in the "new interface" mode for mobiles, WINDEV Mobile 18 already supports the following controls:

- static
- edit
- button
- check box
- radio button
- list box
- combo box
- image
- loopers
- ...

Benefit provided by this version 18 new feature:
Portability of your applications

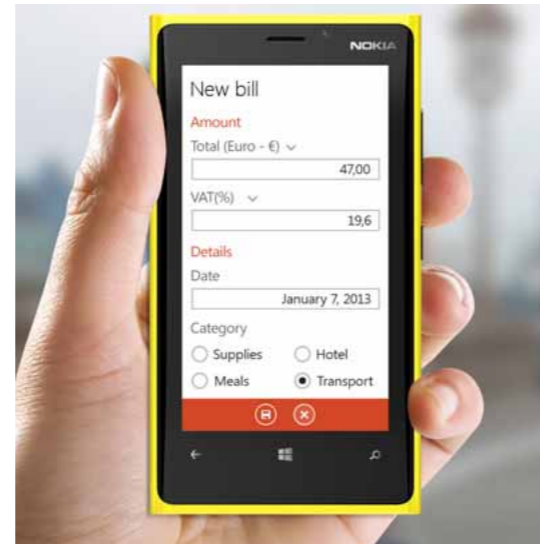
611 to 858 new feature WD WB WM

248 NEW WLANGUAGE FUNCTIONS FOR WINDOWS 8 NEW INTERFACE

WLanguage gains functions aimed for native Windows 8 applications (WinRT API):

<code>Abs</code>	<code>Add</code>	<code>AddColumn</code>	<code>AddLine</code>
<code>AnsiToUnicode</code>	<code>ArcCos</code>	<code>ArcSin</code>	<code>ArcTan</code>
<code>ArcTan2</code>	<code>Round</code>	<code>RoundDown</code>	<code>RoundUp</code>
<code>Asc</code>	<code>BufferToInteger</code>	<code>BufferToReal</code>	<code>Charact</code>
<code>CharactType</code>	<code>CharactUnicode</code>	<code>StringStartsWith</code>	<code>StringCompare</code>
<code>StringBuild</code>	<code>StringEndsWith</code>	<code>StringFormat</code>	<code>StringInsert</code>
<code>StringReverse</code>	<code>StringCount</code>	<code>StringRetrieve</code>	<code>StringDelete</code>
<code>StringToUTF8</code>	<code>ControlVisible</code>	<code>ChangeCharset</code>	<code>Seek</code>
<code>SeekByProcedure</code>	<code>SeekProcedure</code>	<code>ChronoStart</code>	<code>ChronoEnd</code>
<code>ChronoPause</code>	<code>ChronoReset</code>	<code>ChronoResume</code>	<code>ChronoValue</code>
<code>Complete</code>	<code>MakeInteger</code>	<code>Contains</code>	<code>Conversion</code>
<code>Cos</code>	<code>CoTan</code>	<code>dbgEnableAssert</code>	<code>dbgAssert</code>
<code>dbgError</code>	<code>dbgInfo</code>	<code>dbgCheckDifferent</code>	<code>dbgCheckEqual</code>
<code>dbgCheckFalse</code>	<code>dbgCheckNotNull</code>	<code>dbgCheckNull</code>	<code>dbgCheckTrue</code>
<code>DecimalToSexagesimal</code>	<code>Dequeue</code>	<code>Pop</code>	<code>Move</code>
<code>MoveColumn</code>	<code>MoveLine</code>	<code>Deserialize</code>	<code>Dimension</code>
<code>GetColor</code>	<code>Right</code>	<code>SwapLine</code>	<code>Push</code>
<code>Enqueue</code>	<code>In64bitMode</code>	<code>InAJAXMode</code>	<code>InAndroidMode</code>
<code>InAWPMode</code>	<code>InComponentMode</code>	<code>InAndroidEmulatorMode</code>	<code>InIOEmulatorMode</code>
<code>InWindowsPhoneEmulatorMode</code>	<code>InReportsAndQueriesMode</code>	<code>InFactoryMode</code>	<code>InIOSMode</code>
<code>InJavaMode</code>	<code>InLinuxMode</code>	<code>InUMCMode</code>	<code>InPHPMode</code>
<code>InPocketMode</code>	<code>InStoredProcedureMode</code>	<code>InUMCMode</code>	<code>InSimulatorMode</code>
<code>InAndroidSimulatorMode</code>	<code>InIOSSimulatorMode</code>	<code>InPHPSimulatorMode</code>	<code>InPocketSimulatorMode</code>
<code>InWindowsPhoneSimulatorMode</code>	<code>InTestMode</code>	<code>InAutomaticTestMode</code>	<code>InTSEMode</code>
<code>InWebMode</code>	<code>InWebserviceMode</code>	<code>InWindowsMode</code>	<code>InWindowsMobileMode</code>
<code>InWindowsPhoneMode</code>	<code>InWinRTMode</code>	<code>Error</code>	<code>ErrorChangeParameter</code>
<code>ErrorBuild</code>	<code>ErrorThrow</code>	<code>ErrorInfo</code>	<code>ErreurPropagate</code>
<code>ErrorPropagate</code>	<code>ErrorRestoreParameter</code>	<code>BinaryAND</code>	<code>ExceptionEnable</code>
<code>ExceptionChangeParameter</code>	<code>ExceptionThrow</code>	<code>ExceptionInfo</code>	<code>ExceptionPropagate</code>
<code>ExceptionRestoreParameter</code>	<code>Execute</code>	<code>ExecuteProcess</code>	<code>Exp</code>
<code>ExtractString</code>	<code>ExtractLine</code>	<code>Factorial</code>	<code>CurrentWin</code>
<code>WinInput</code>	<code>WinInitialized</code>	<code>Close</code>	<code>FinRedemption</code>
<code>FinDecreasingRedemption</code>	<code>FinLinearRedemption</code>	<code>FinError</code>	<code>FinValFuture</code>
<code>FinPeriodInterest</code>	<code>FinPaymentNb</code>	<code>FinInterestRate</code>	<code>FinCurrentVal</code>
<code>FinNetCurrentVal</code>	<code>FinFutureVal</code>	<code>FinRepayVal</code>	<code>fExeDir</code>
<code>Left</code>	<code>Info</code>	<code>InfoBuild</code>	<code>Insert</code>
<code>InsertColumn</code>	<code>InsertLine</code>	<code>LineToPosition</code>	<code>ListAdd</code>
<code>ListSeek</code>	<code>ListInsert</code>	<code>ListModify</code>	<code>ListCount</code>
<code>ListDelete</code>	<code>ListDeleteAll</code>	<code>Ln</code>	<code>Log</code>
<code>Upper</code>	<code>MatAdd</code>	<code>MatStack</code>	<code>MatCopy</code>
<code>MatCreate</code>	<code>MatDeterminant</code>	<code>MatWrite</code>	<code>MatError</code>
<code>MatExist</code>	<code>MatInvert</code>	<code>MatRead</code>	<code>MatReadColumn</code>
<code>MatReadLine</code>	<code>MatMultiply</code>	<code>MatNbColumn</code>	<code>MatNbLine</code>
<code>MatNbRow</code>	<code>MatFloatAdd</code>	<code>MatFloatMultiply</code>	<code>MatFill2</code>
<code>MatFill</code>	<code>MatDelete</code>	<code>MatTranspose</code>	<code>MessTranslate</code>
<code>Middle</code>	<code>Lower</code>	<code>WordOccurrence</code>	<code>WordToArray</code>
<code>Mean</code>	<code>Nation</code>	<code>BinaryNOT</code>	<code>BinaryOR</code>
<code>BinaryXOR</code>	<code>YesNo</code>	<code>OpenChild</code>	<code>DecimalPart</code>
<code>IntegerPart</code>	<code>StackInfo</code>	<code>LoWord</code>	<code>HiWord</code>
<code>Position</code>	<code>PositionOccurrence</code>	<code>PositionToLine</code>	<code>ProjectInfo</code>
<code>PropertyExist</code>	<code>Power</code>	<code>Root</code>	<code>Reset</code>

GetDefinition	GetTypeDefinition	Replace	Repeat
NoAccent	NoCharacter	NoRightCharacter	NoLeftCharacter
NoSpace	Serialize	SexagesimalToDecimal	Sin
Sum	StatCorrelation	StatCovariance	StatAverageDeviation
StatStandardDeviation	StatStandardDeviationP	StatError	StatMax
StatMin	StatAverage	StatSum	StatVariance
statVarianceP	Delete	DeleteColumn	DeleteLine
DeleteAll	ArrayAdd	ArrayAddLine	ArrayAddSorted
ArraySeek	ArraySeekByProcedure	ArrayCopy	ArrayMove
ArrayMoveLine	ArraySwapLine	ArrayInfo	ArrayInsert
ArrayInsertLine	ArrayReverse	ArrayCount	ArrayDelete
ArrayDeleteDuplicate	ArrayDeleteLine	ArrayDeleteAll	ArraySort
Length	CommonLength	Tangent	Sort
Truncate	TypeVar	DataType	UnicodeToAnsi
UTF8ToAnsi	UTF8ToString	UTF8ToUnicode	Val
VariableReset	WinDevVersion		



859 new feature WD WB WM

WINDOWS STORE

The Windows Store can accept your applications for Windows 8 built with WINDEV Mobile 18.

Benefit provided by this version 18 new feature:
Distribution of your applications.

860 new feature WD WB WM

WINDOWS PHONE 8

Windows Phone 8 is specifically meant for smartphones. WINDEV Mobile 18 offers native programming for Windows Phone 8.

Benefit provided by this version 18 new feature:
Portability of your applications.

WINDOWS CE & MOBILE

861 new feature WD WB WM

COMMON NEW FEATURES

The development for Windows Mobile and Windows CE benefits from the environment's evolutions.

Benefit provided by this version 18 new feature:
All the mobile operating systems from Microsoft are supported.

Each update to version 18 entitles you to 15 inquiries with the free PC SOFT Technical Support*. In version 18, your teams benefit from the free technical support! You're safe...

SUPPORT

(during the commercial availability of the version).



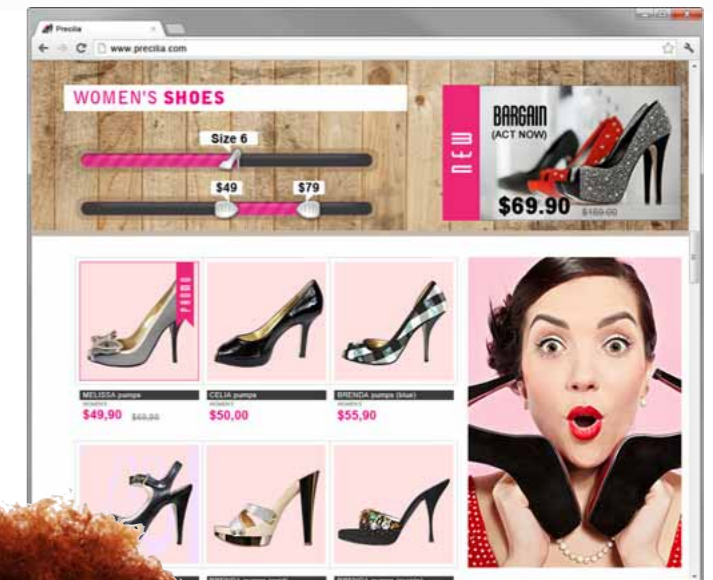
118 COMMON NEW FEATURES

862 new feature WD WB WM

118 COMMON NEW FEATURES

WEBDEV 18 benefits from all the common new features of version 18.

Your teams benefit from the new common controls (see below), from the control evolutions, from WLanguage evolutions, from the report evolutions, from HyperFileSQL evolutions: you remain at the forefront of technology. The environment is more productive, more efficient and more pleasant to use.



The slider and range slider controls

Benefit provided by this version 18 new feature:
Slip sliding away ...

NEW CONTROLS

863 WD WB WM

LINEAR SLIDER CONTROL

Version 18 offers a graphic linear slider control. It is fully customizable. The control is made of a ruler and a cursor. The slider control is very useful for offering the user to enter a value within a given interval. This control is provided with a choice of styles and can be modified by programming: lower bound, upper bound...

864 WD WB WM

RANGE SLIDER CONTROL

The new range slider control is a linear slider with two cursors.

It allows the user to define an interval of values.

On an eCommerce site, it allows the user to enter a price bracket to filter the products displayed.

The range slider is fully configurable, comes with a large number of styles and can be modified by programming.





Customization examples of linear slider and range slider controls

Benefit provided by this version 18 new feature:
Slide, space ranger.

865 new feature WD WB WM

ORGANIZER CONTROL

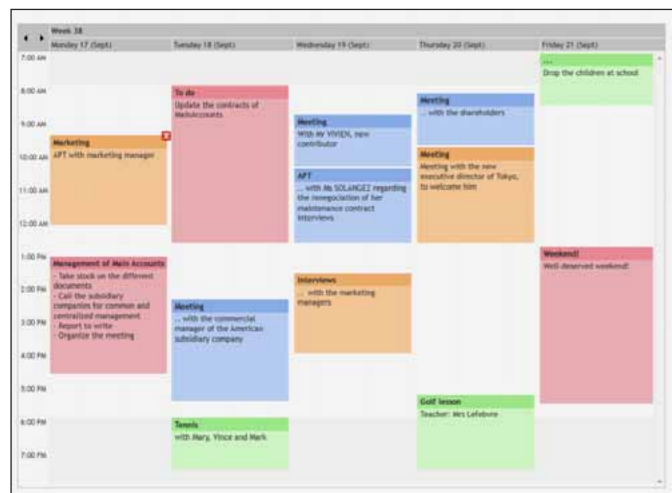
New control in version 18 of WEBDEV, the Organizer control lets you very simply display and work with organizers. The display is done by day, week or month.

You can configure the time period, the first day of the week, as well as the number of days displayed. The Organizer control has its own style for configuring colors, fonts, alignment, and so on, for the various elements displayed.

The new `organizer` function family, and the `Appointment` type make it easier to program this control.

The link with the data is done easily via programming, or automatically via data binding.

The Organizer control is adapted for gesture operations: create, delete, move appointments with finger gestures.



An organizer in a WEBDEV 18 site

Benefit provided by this version 18 new feature:
An organizer in your site in just a few clicks!

866 new feature WD WB WM

SOCIAL NETWORK CONTROL

The "Social Network" control is a toolbar made of icons that link to the main social networks on the Web: Facebook, Tweeter, Google+, LinkedIn.

This control is usually inserted in a site or in the margin of an article.

This control mainly offers two types of action to the user:

- share one's experience with one's social network community.
- provide feedback on a page or a site using the "Like" feature of Facebook, or "+1" feature of Google+.

You can choose the icons to display, as well as their size.



The "Social Network" control

Benefit provided by this version 18 new feature:
Users are more likely to share their experience, and therefore the site becomes more visible.

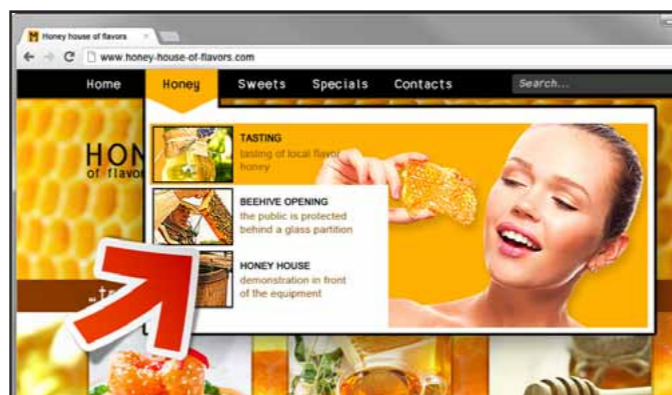
867 new feature WD WB WM

POPUP MENU CONTROL

In version 18, the menu control now lets you open a popup. Hovering an option in the menu bar opens a fully customizable popup.

This allows you to build graphic menus.

You can insert any type of control in the popup, which offers limitless interactive possibilities for your menus.



The menu choice is expanded as a "Popup"

Benefit provided by this version 18 new feature:
Menus are fully configurable.

868 new feature WD WB WM

TOAST CONTROL (NON MODAL FURTIVE MESSAGE)

A Toast is an non-blocking message that pops up on the screen at a given position and for a set amount of time. The toast control is being introduced in WEBDEV 18.

The `ToastDisplay` function lets you display a message inside a non-blocking furtive popup.

The popup is customizable.



A mobile site displays a furtive message

Benefit provided by this version 18 new feature:
Notify the user without interrupting his activity and without annoying him.

869 new feature WD WB WM

TREEVIEW TABLE CONTROL

In version 18, a new table control is being introduced in WEBDEV:

the "treeview table".

It is a table using a treeview type column. Thanks to the expand and collapse properties of this column, the user can hide or show specific tables rows.

You can also interact with this feature via programming.

This type of table allows for great compatibility with existing WINDEV applications.

Benefit provided by this version 18 new feature:
The user can easily collapse the table rows.

CONTROLS: EVOLUTIONS

870 new feature WD WB WM

MENU CONTROL: INTERESTING EVOLUTIONS

In addition to the ability to use popups in menus (see new feature # 867), menus are revamped in WEBDEV version 18 and offer several improvements:

- more modern styles are offered
- animation effects are available when expanding sub-menus (see new feature # 961).
- new `Selection` process on the main options
- ability to create "submit" type links on options
- ability to switch to secure mode from an option (Active SLL).

Benefit provided by this version 18 new feature:
Menus are becoming more attractive.



Develop 10 times



Version 18 brings serenity to your teams: guaranteed success!



times

STYLE FOR THE INPUT AREA

In version 18, edit, combo box and list box controls offer additional style choices allowing you to customize the input area. For example, you can customize the internal border of the edit control, to display rounded corners and shadows. Of course, the skin templates offer these new styles.



6 examples of input borders

Benefit provided by this version 18 new feature:
Data entry forms look better.

LOOPER: BORDER STYLE

The Looper control's style gets richer in version 18. In older WEBDEV versions, you could only specify a style for the general border that framed the entire looper control. In version 18, it is now possible to specify a style of border for each row in the looper control. The page layout of graphically sophisticated looper controls is simpler.

Benefit provided by this version 18 new feature:
Good looking looper controls, easily.

DATE EDIT CONTROL: CUSTOMIZATION

The date edit control lets you display a calendar button. This calendar button ... opens a calendar to make date entry easier. In version 18, several types of calendar buttons are offered. Colors respect the color palette of the skin used for the page.



Customization examples

Benefit provided by this version 18 new feature:
The control matches the site.

PAGER

The pager control now offers several presentation styles (link, button). You can also customize the pager's graphic elements.



Pager examples in version 18

Benefit provided by this version 18 new feature:
Pagers that match the site's graphic charter.

SCHEDULER CONTROL

The style of the WEBDEV Scheduler control gets refined in version 18. You can differentiate the title areas' look: day, month and week number. Refresh speed optimizations have been made to large size scheduler controls: re-displaying a modified scheduler is much faster. The scheduler control also evolves to adapt to touch devices (tablets, smartphones). The operating modes for creating, moving, deleting appointments are compatible with the "multi-touch" environment, and can be performed with one finger.

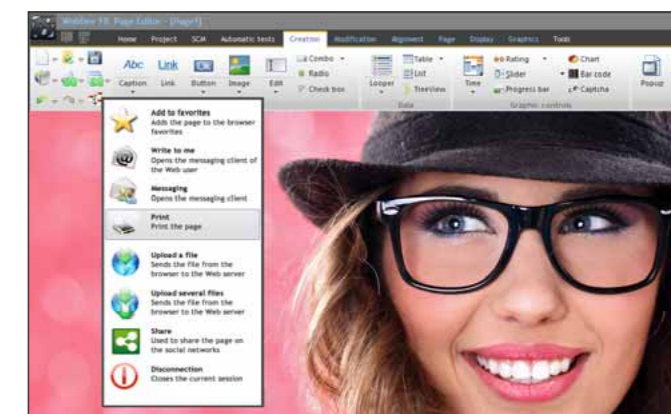
VARIOUS EVOLUTIONS

The chart control offers a specific style for chart legends, independent from the title's.

Benefit provided by this version 18 new feature:
Site finishing improves.

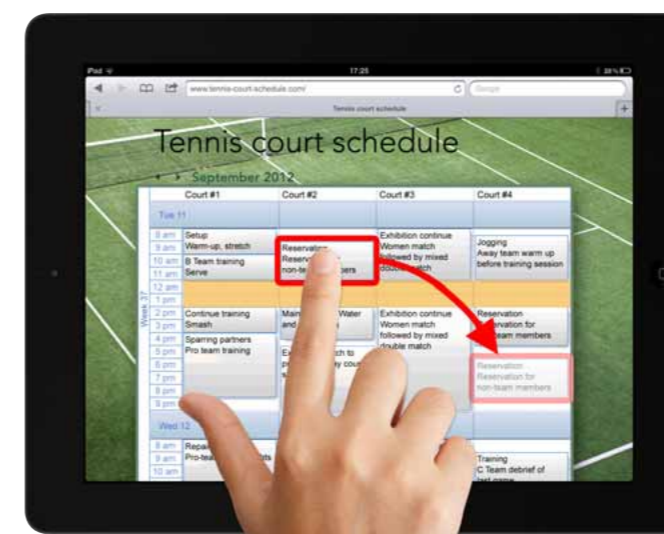
ENVIRONMENT

RIBBON: PRESENTING MORE CONTROLS IN CREATION



Selection of the button control

As you know, version 18 offers ribbons in the editors. In WEBDEV the most commonly used controls usually offered in the Kouglof are now located in the ribbon next to the standard controls. This way the developer can more easily discover and use the control corresponding to his needs. **Benefit provided by this version 18 new feature:**
The number of controls offered visually increases.



In a WEBDEV 18 site on a tablet, moving an appointment with the finger

Benefit provided by this version 18 new feature:
Schedules are easier to read and to manipulate on a touch screen.

PARTIAL BORDERS

WEBDEV lets you create sophisticated frames: rounded, beveled, with halo effect, shadow, 3 D, gradient background ... The color palette chosen for the site automatically applies to the border. These borders can be extended at run time. On a partial border, you can decide not to display pieces of the border. In version 18 it becomes easy to juxtapose several partial borders to create inserts.



The right insert is made of 3 borders (some borders have been removed before being combined)

Benefit provided by this version 18 new feature:
Presentation abilities increase.

PAGE CREATION

879 new feature W D W B W M

PAGE EDITION PHILOSOPHY

Version 18 of the WEBDEV editor simplifies page editing: no need to create a cell to define a page background. Everything is done in WYSIWYG fashion.

In version 18, a page has:

- its own style (see new feature #880),
 - an anchor within the navigation area (new feature #885),
 - internal and external images (new feature #881).
- The layout is easier to edit and comes up faster in the browser.

Benefit provided by this version 18 new feature:
Page editing is clearer, pages are lighter.

880 new feature W D W B W M

PAGE STYLES

In WEBDEV 18, pages have their own style.

This style allows you to define page elements:

- a sophisticated border
- a background (solid, gradient or image)
- default link colors.

It becomes very easy to apply a border to a page.

Page layout is more straightforward.

Other benefit, it makes it easier to share the same style among several pages.

Of course, the skin templates provided with WEBDEV 18 take the page style into account.

Benefit provided by this version 18 new feature:
Pages are much easier to edit.

881 new feature W D W B W M

PADDING AND MARGIN

Other new powerful feature of the WEBDEV page editor in version 18, the ability to define padding and margin.

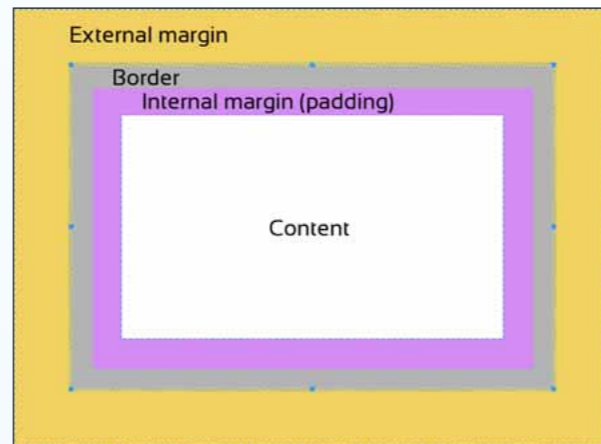
These margins make it very easy to simply set the spacing between the elements that make up the page.

There's no need to create cells to position areas, create backgrounds or frames!

The padding lets you build borders and colored background while respecting a consistent margin all around.

Positioning and aligning controls is easier in the editor.

The HTML architecture of the page is lighter and therefore it displays faster on the browser and is more WYSIWYG.



Margins and borders (see opposite page as well)

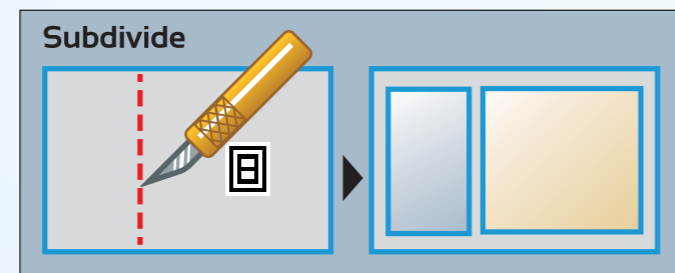
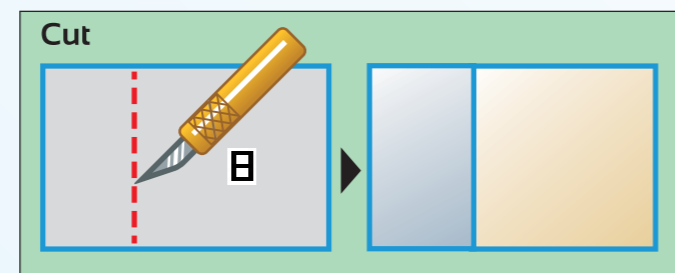
Benefit provided by this version 18 new feature:
No need to create cells anymore to position the content and no need to create color backgrounds and borders

882 new feature W D W B W M

ZONING: SUBDIVIDING TOOL

In version 18, the new "subdivide" tool is introduced to complete the "cut" tool.

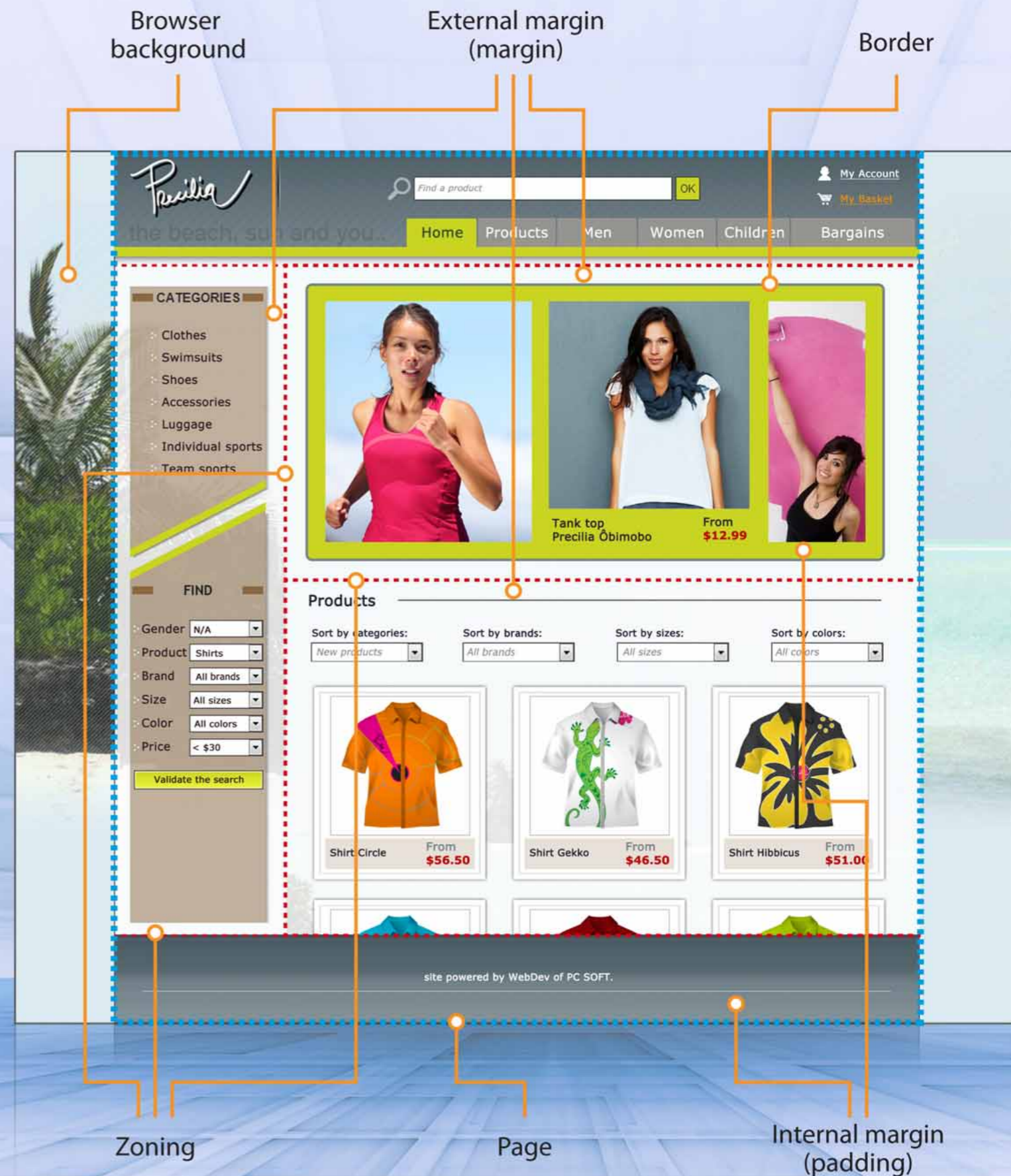
The "cut" tool lets you split a page's zone into two distinct zones. The "subdivide" tool on the other hand, will create two new zones, but keeping the original one. therefore there will be 3 zones at the end of the operation: the initial zone, and the two new zones inside the initial zone.



Cut or subdivide? Choose what's best for your site

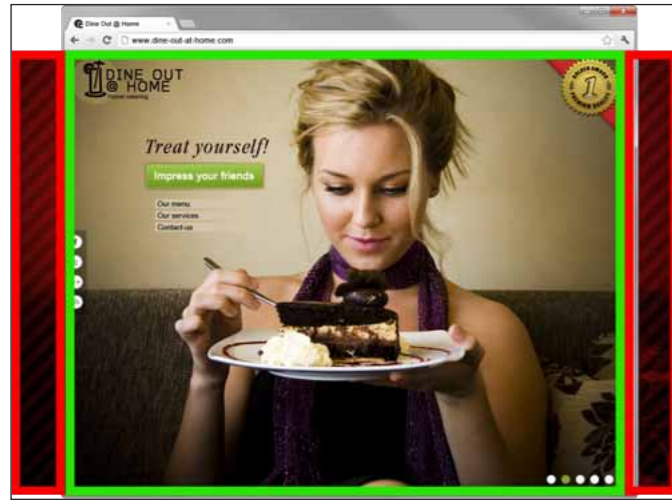
Benefit provided by this version 18 new feature:
The design of the page architecture is much more intuitive.

PAGE EDITION PHILOSOPHY



ADAPTIVE BACKGROUND (COVER & CONTAIN)

WEBDEV 18 lets you display, in a site's background, a large background image that will adapt to all the browser's sizes, proportionally to its original size without deformation.



In all cases, the image will fill the background and will be well proportioned (here the left and right size are trimmed)

Benefit provided by this version 18 new feature:
Dare slick pictures, and always of the right size, in the background of your sites.

CONTROL PERMUTATION

The WEBDEV editor already offers possibilities of control permutation, such as converting a check box into a radio button, while keeping all the control's information.

WEBDEV 18 offers new control permutation possibilities:

- "Link" and "Button"
- "Link" and "Clickable image"
- "Edit control" and "Formatted control"
- "Table" and "Treeview table"
- "Edit control" and "Combo box"
- "List box" and "Combo box"
- "Radio button" and "Combo box"

You can also swap:

- "an image control" with "a cell background image"

These permutations save time during the editing process by avoiding the entire re-entry of the controls when changing presentation, and preventing oversights.

Benefit provided by this version 18 new feature:
Transformation in 1 click.

ANCHORS

ANCHORING THE PAGE

In version 18, the page has its own anchoring mechanism. This allows you to define the page's behavior in case the browser window is resized by the end user.

As with controls, the anchor setting is done from the page description window.

By default pages are centered horizontally.

Benefit provided by this version 18 new feature:
Easy control of the pages' positioning.

ANCHORING POPUPS

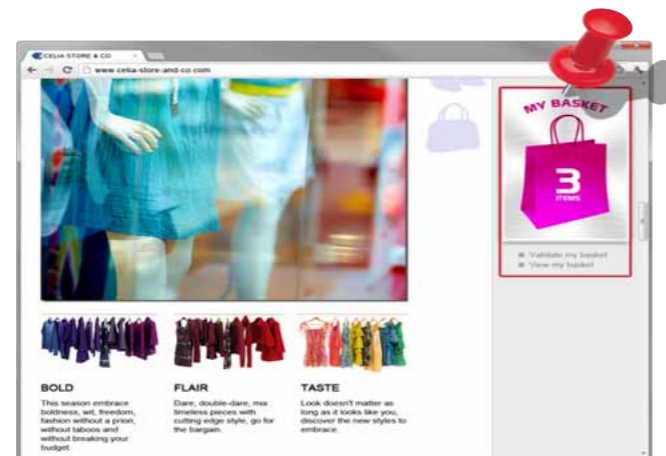
You can now define the anchoring of the popups in respect to the browser window.

This allows you to control the behavior of the popups in case the end user resizes the browser window.

Benefit provided by this version 18 new feature:
Total control of the popups positioning.

FIXED SCREEN AREAS

Important new feature in version 18, the fixed type anchor. This fixed anchor allows one or more controls to remain visible when the user scrolls.



Even if the user scrolls the page down, the basket will remain visible at the same position

The elements anchored in such a way move with the scrolling and therefore, remain visible while the rest of the page scrolls.

Benefit provided by this version 18 new feature:
Important information remains constantly visible to the user.

ANCHORING OVERLAYING CONTROLS

A control can be overlaid, i.e. it can be displayed on top of another control.

An overlaid control can be moved by the end user: Just specify it in the "7-tab".

Anchors are now also available for overlaid controls.

Benefit provided by this version 18 new feature:
Controls remain visible regardless of the browser layout.

SKINS AND PALETTES

2 NEW SKINS

Two new sophisticated skins are offered in version 18. Your choice of graphic charter increases!

And did you know? Each quarter, the tech support newsletter (LST) offers you a new skin based on a popular design.



By subscribing to the LST, you automatically benefit from these new skins, which you can freely use to customize your sites.

Benefit provided by this version 18 new feature:
New customization possibilities for your sites.

USE OF CUSTOM FONTS

By default, browsers support the following fonts: Verdana, Arial,... Version 18 of WEBDEV now lets you use other fonts than the ones supported by default.

Benefit provided by this version 18 new feature:
New customization possibilities for your sites.

SKINS BECOME MORE REFINED

A skin can now use different fonts. Light visual animations are present.

Benefit provided by this version 18 new feature:
Skins are more sophisticated.

PRESET TEMPLATES

In version 18, new preset templates are being introduced. The existing preset templates evolve. They're made of nested layout areas. Page layout is simpler, and operations are much easier to perform.

Benefit provided by this version 18 new feature:
Simplification of the architecture, easier operations.

APPLICATION RAD

EVOLUTIONS OF THE ECOMMERCE APPLICATION RAD

The eCommerce application RAD, which allows you to very quickly create an online store, has had great success. In version 18, a large number of evolutions make it even more efficient.

Among these evolutions, you'll find:

- hierarchy in the organization of products and families
- links between products
- inventory management, automatic alerts
- breadcrumbs in the product navigation
- version for mobile devices

Benefit provided by this version 18 new feature:
The eCommerce RAD is even more powerful.

NEW APPLICATION RAD: PHOTO GALLERY

A new application RAD is being introduced in version 18: the "Photo Gallery" RAD. This new RAD is meant for activities that revolve around a visual representations: art gallery, professional photography, travel notebook, press, etc.



A beautiful site in a few clicks

Benefit provided by this version 18 new feature:
Creating a site for managing photos is much easier.

CLASSIC RAD: EVOLUTIONS

The classic RAD lets you automatically create pages or a complete site from a given data model. The classic RAD evolves in version 18. In version 18, classic RAD is based on page templates using zoning. This allows the pages' size to be easily adapted for their content regardless of the number of controls generated, bringing added flexibility to the page layout.

Benefit provided by this version 18 new feature:
RAD pages are well proportioned and easy to modify.

SAAS

PASSWORD LIFE SPAN

A user connects to a SaaS application using an identifier and a password. You can specify a life span for the user's password.

At the end of the password's life span the user must change password. This feature is available in automatic mode and via programming for the custom mode.

Benefit provided by this version 18 new feature:
Access security is increased.

SERVICES TO WHICH A USER SUBSCRIBES

A new syntax is introduced for the `SaaSAdminListService` administration function. You can list the services to which an end user subscribes.

Benefit provided by this version 18 new feature:
Your applications offer more functionalities.

CLOUD



DEPLOY IN 1 CLICK

Deploying a site in the cloud has never been simpler: simply enter the login and password of the Cloud account, the deployment of a site, a web service or an http installation is done in 1 click! (www.pcsccloud.net)

Benefit provided by this version 18 new feature:
Deployment has never been easier.

AWP



REFERENCING: SUPPORT FOR DASHES IN THE PAGE'S PHYSICAL NAME

In version 18, you can now use the "-" (dash) character in page names. Using dashes in names is useful for page referencing. This is because search engines interpret the "-" character as a keyword separator.

Therefore the engine interprets each word separated by a dash independently. This way a page whose name is made of several keywords separated by "-" will usually be referenced more pertinently by search engines.

Benefit provided by this version 18 new feature:
Better page referencing.

OPENSSL SECURITY: PAYMENT

The OpenSSL library is used by several sites for secure payment, like PayBox, to certify the requests between the business site and the payment site. In version 18, the `OpenSSLCheck` function lets you easily check encrypted keys against the OpenSSL cryptographic library. This way you don't have to use an external module anymore to perform this check.

Benefit provided by this version 18 new feature:
Secure communication with native payment site.

REFERENCING: SCRIPTDISPLAY WITH PERMANENT REDIRECTION

The `ScriptDisplay` function returns:

- an Http code for the browser (301 or 302)
- a page address (WEBDEV page or other page: .awp, .asp, .php, ...), on which the browser will redirect.

The browser displays this new page.

In version 18, you can specify the http return code:

- either the found code (code 302), default value indicating that the redirection worked
- or the "permanently moved" code (code 301), which indicates that the redirection worked and is permanent.

This 301 code is useful for specifying to search engines that the original page (the one executing `ScriptDisplay`) should not be referenced.

This evolution also applies to the `PHPDisplay` and `ASPDdisplay` functions.

Benefit provided by this version 18 new feature:
Avoid referencing redirection pages.

PARALLEL PROCESSING; NEW FUNCTIONS: FREEAWPCONTEXT

In version 18, the new `FreeAWPContext` function specific to the AWP mode is being introduced.

This function allows you to force the freeing of the AWP context on the server. This allows you to optimize parallel processes in AWP pages with context for advance use cases. By freeing the useless context, parallel processes (Ajax, ...) are accelerated.

Benefit provided by this version 18 new feature:
Optimize parallel processes in pages.

PHP



NEW CONTROLS AND PHP EVOLUTIONS IN VERSION 18

All the new available controls in WEBDEV 18 are also available for PHP:

- calendar,
- social links,
- treeview table,
- slider,
- ...

Benefit provided by this version 18 new feature:
PHP development is even more powerful.

PHP: 38 NEW FUNCTIONS

38 new WLanguage functions are being introduced in PHP:

OrganizerDisplay	OrganizerDisplayPreviousPeriod	OrganizerDisplayNextPeriod	OrganizerAddAppointment
OrganizerChangeMode	OrganizerChangeZoom	OrganizerTimeDisplayed	OrganizerListAppointment
OrganizerMode	OrganizerPosition	OrganizerSelectMinus	OrganizerSelectPlus
OrganizerDeleteAppointment	OrganizerDeleteAll	OrganizerZoom	StringRetrieve
InWindowsPhoneEmulatorMode	InFactoryMode	InWindowsPhoneSimulatorMode	InWindowsPhoneMode
fCreateLink	fSeparator	LanguageToName	sComputeCrc16
SiteAddress	SQLChangeConnection	TableAddChild	ArraySwapLine
ArrayReverse	TableSeekChild	TableExpand	TableCollapse
TableItemStatus	TableInsertChild	TableGiveChild	TableGiveParent
TableDeleteChild	TableSortChild	TableTypeItem	UUDecode
UUEncode			

PHP: HFILTER SYNTAX ON COMPOSITE KEY

The new syntax offers by version 18 in PHP is useful for building a filter on a composite key without having to use the `HBuildKeyValue` fonction.

The composite key's bounds are directly passed as parameters to the `HFilter` function. For example:

```
HFilter(Customer, LastNameFirstName, ["DOE", "John"], ["DOE", "Paul"])
```

lets you search for all the customers whose last name and first name are found between "DOE John" and "DOE Paul".

Benefit provided by this version 18 new feature:

Composite keys management is easier in PHP.

HTML GENERATION

"GENERATE" HTML 5 CODE" OPTION



Version 18 of WEBDEV lets you choose between two HTML generation standards:

- the "HTML 4.0 transitional" standard
- the "HTML 5" standard.

The "HTML 4.0 transitional standard" ensures compatibility with older browsers ("Quirk" mode for the experts).

The "HTML 5" standard is being introduced in version 18. This standard lets you take advantage of the newer browsers' features, as well as the features defined by the W3C HTML 5 standard.

Benefit provided by this version 18 new feature:

Take advantage of the newer browsers' power.

POSITIONING BY CSS STYLE SHEET

By choosing the HTML 5 generation standard, WEBDEV 18 automatically generates optimized HTML code.

The positioning information of the page elements is then stored in the CSS style sheet associated with the page, and not with the page itself.

The HTML page is lighter.

The response times are improved.

Benefit provided by this version 18 new feature:
Better response time and page update during navigation.

COMPRESSION OF JAVASCRIPT FILES (.JS)

A dynamic HTML page comes with Javascript files (.js). These Javascript files are automatically generated by WEBDEV, from the WLanguage code.

In version 18, these files are compressed: their size is reduced. This allows you also to decrease the browser load time and therefore to reduce the amount of time it takes to bring up pages at first.

Benefit provided by this version 18 new feature:

First display of the pages is faster.

BROWSER CODE (WLANGUAGE)

On an Internet or Intranet site, the WLanguage code runs either on the server, or on the browser.

The developer chooses where to place the code.

The browser code is run, as its name indicates, by the browser on the user's machine. It avoids back and force trips with the sever.

Thanks to WEBDEV, this "browser" code is entered in WLanguage, as always!

DETECTION OF THE CAPS LOCK KEY

A new, very useful, browser function is being introduced in version 18: `CapsLockVerify`.

This function enables you to control whether the Caps Lock key is active on the end user keyboard.

This feature is mostly used when entering a masked password to notify the user that he's typing in caps.

Benefit provided by this version 18 new feature:

Assistance with password entry.

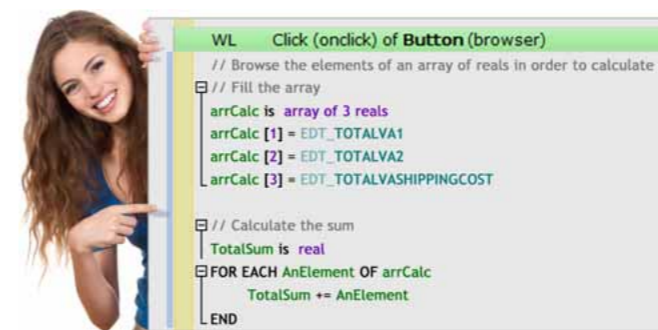
FOR EACH STATEMENT

The `FOR EACH` statement and its associated statements are available in browser code.

This instruction enables you to automatically read different types of variables.

`FOR EACH [element] on array` applies to array elements or associative array elements.

`FOR EACH STRING on string` and `FOR EACH POSITION on string` apply to character strings.



Benefit provided by this version 18 new feature:

Clearer and more concise browser code.

SWITCH STATEMENT WITH OPERATORS

In version 18, you can use operators inside the `SWITCH` statement in browser code.

Benefit provided by this version 18 new feature:

WLanguage's power is available for writing browser code.

OPTIONAL CONCATENATION OPERATOR

The optional concatenation operator for character strings is available in browser code.

This operator is made of the [and] characters.

It lets you concatenate a string with another one only if the original string is not empty and doesn't already end with the string to concatenate.



Benefit provided by this version 18 new feature:

More compact and efficient code.

AUTOMATIC TYPE CONVERSION

In WEBDEV 18, the browser WLanguage performs automatic type conversions during assignments.

You can for example assign a character string containing a number into an integer type, simply by using the = operator. The conversion is implicit and doesn't require a call to a conversion function.

Benefit provided by this version 18 new feature:
The power of WLanguage in browser code!

MISCELLANEOUS

The `maskSystemDate` constant is available in browser code. The `InfoBuild` and `ErrorBuild` functions let you display a piece of information or an error in a browser system window directly from the browser code.

Benefit provided by this version 18 new feature:

New features for browser code.

LINUX 80 NEW FUNCTIONS



80 NEW FUNCTIONS ARE AVAILABLE IN WEBDEV ON LINUX

OrganizerDisplay	OrganizerDisplayPreviousPeriod	OrganizerDisplayNextPeriod	OrganizerAddAppointment
OrganizerChangeMode	OrganizerTimeDisplayed	OrganizerListAppointment	OrganizerMode
OrganizerPosition	OrganizerSelectMinus	OrganizerSelectPlus	OrganizerDeleteAppointment
OrganizerDeleteAll	BufferToInteger	BufferToReal	CharactTypeOccurrence
CharactType	StringInsert	ChronoReset	dbgError
DecimalToSexagesimal	SwapLine	InWinRTMode	ExtractLine
fAddBuffer	fAddText	FTPAttribute	FTPConnect
FTPDate	FTPDisconnect	FTPSend	FTPTime
FTPListFile	FTPName	FTPGet	FTPRenameFile
FTPMakeDir	FTPCurrentDir	FTPRemoveDir	FTPDeleteFile
FTPSize	HDuplicateRecord	HListFullTextIndex	HNotifAddCCRecipient
HNotifAddEmailRecipient	HNotifConfigure	HNotifListCCRecipient	HNotifAddCCRecipient
HNotifDeleteCCRecipient	HNotifDeleteEmailRecipient	HRSAddConfig	HRSInit
HRSListConfig	HRSModifyConfig	HRSDeleteConfig	iPrintBarCode
iPrintPDF	iColumnNum	iColumnEnd	FreeAWPContext
PropertyExist	NoRightCharacter	NoLeftCharacter	SexagesimalToDecimal
TableAddChild	ArraySwapLine	ArrayReverse	TableSeekChild
TableExpand	TableCollapse	TableItemStatus	TableInsertChild
TableGiveChild	TableGiveParent	TableDeleteChild	TableSortChild
TableTypeItem	TimelineAddEvent	TimelineAddTrack	TimelineListEvent
TimelineDeleteEvent	TimelineDeleteAll	Truncate	UTF8ToAnsi
UTF8ToUnicode			

AUTOMATIC ANIMATION EFFECTS ON CONTROLS (CSS3)

953 new feature W D W B W M

VERY SOPHISTICATED EFFECTS IN A FEW CLICKS

Among the interesting new features of version 18 for your sites, the ability to easily add sophisticated animation effects on your sites' controls is offered.

In a few clicks, your sites adopt a very modern behavior. The choice of effects is done very easily in the "style" tab of the control. The technology used for these effects is based on the CSS3 standard.

Note that an "advanced" mode is also available for accomplished developers who want to configure these effects in details.

Benefit provided by this version 18 new feature:
Create effects in one click!

954 new feature W D W B W M

FADING EFFECT WHEN HOVERING AND SELECTING

When the mouse hovers the control, this effect produces a gradual change between the control's style defined for the regular state, and the control's style defined for hovering.

The effect can apply to one or more of the following properties:

- the control background color,
- the color and size of the font,
- the position of the background image,
- the internal or external margins,
- the opacity.

This effect is especially adapted to the following types of controls: link, buttons, menu sub-options, ...

This effect is also offered for row selection in a list or a table.

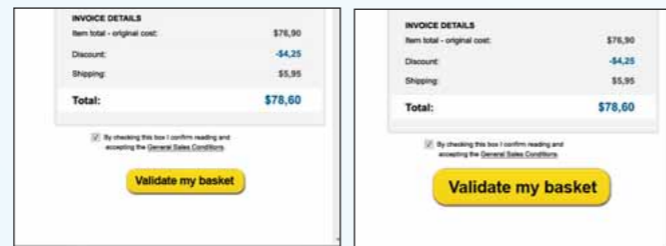
Benefit provided by this version 18 new feature:
Users are going to love this style!

955 new feature W D W B W M

MAGNIFYING EFFECT WHEN HOVERING

This effect applies a slight magnifying effect when hovering the control.

This effect is especially suited for the following types of controls: static, button, tab.



Here is a portion of an eCommerce site's page ...
When the mouse goes over the "Validate my basket" button, it automatically becomes slightly bigger

Benefit provided by this version 18 new feature:
The important elements can be emphasized this way, especially to drive to an action (button click).

956 new feature W D W B W M

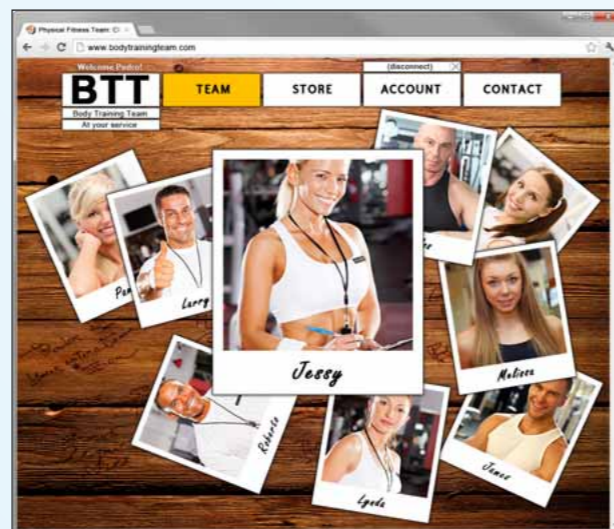
HOVERING EFFECT: 3D FLIP

This makes the control flip over itself in the direction of the hovering, then in the other direction when coming out of the control. This effect is available for the following types of controls: static, button, image.

Benefit provided by this version 18 new feature:
Attractive sites!

957 new feature W D W B W M

DOUBLE PHOTO EFFECT



Fun presentation of photos without any programming

The first step of this effect is to display the image control as a photo, slightly sideways, with a random angle. The second step happens when hovering the image: the photo straightens up, and zooms in slightly. By using this effects on several images in the same page, we easily create an impression of photos pleasantly scattered. This effect is available for image type controls.

Benefit provided by this version 18 new feature:
The photos are harmoniously displayed without any programming.

958 new feature W D W B W M

PANORAMIC SHOT EFFECT

This effect applies a zoom to part of the image and slowly moves the view inside the image. It gives the user the impression of moving inside the image.

This effect is available for the "large" photo type controls.

Benefit provided by this version 18 new feature:
The photos come to life.

959 new feature W D W B W M

BLINKING EFFECT

The control's content blinks.

This effect is useful for the static and button controls.

Benefit provided by this version 18 new feature:
Attract attention with blinking.

960 new feature W D W B W M

OFFSET WHEN HOVERED EFFECT

This effect creates a slight horizontal offset to the left or the right (your choice) when rolling the mouse cursor over the element. The result is especially interesting when this effect is applied to a list, a vertical menu or to several static controls in a serie.



The menu choice is automatically shifted when rolling the mouse over it

Benefit provided by this version 18 new feature:
The hovered line is highlighted, no risk of error.

961 new feature W D W B W M

EXPAND EFFECT ON A MENU

Sub-menus come up with horizontal or vertical scrolling effects depending on the direction it is expanded.

Benefit provided by this version 18 new feature:
Menu display is more fluid.

962 new feature W D W B W M

SWEEPING EFFECT

The sweeping effect brings up the elements in a sweeping movement until their final position.

The element moves from the outside of the page until it reaches its final position.

This effect is especially suited for tab control panes and can also

be used in sub-menus.



Sweeping effect: the tab pane comes from the side of the page

Benefit provided by this version 18 new feature:
The page gets animated.

963 new feature W D W B W M

INCLINATION EFFECT

This effect lets you incline the content of a control based on a given angle.

It allows you to give a slight italics effect to a static control. It is useful to create harmonious titles from a static control using a classic font.



Incline a control? 1 click in the "7-tab"! (here 2 clicks!)

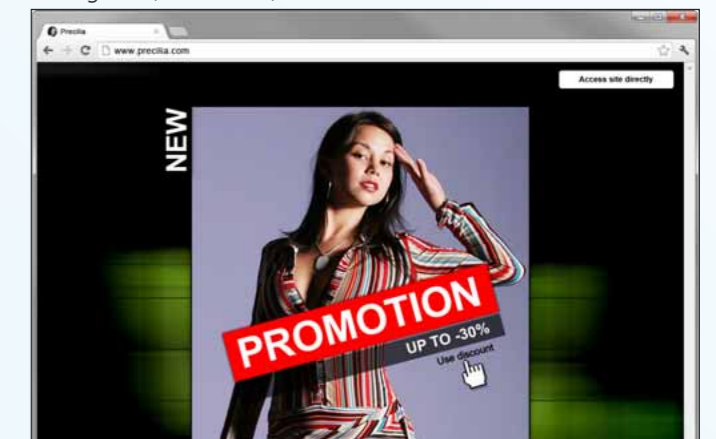
Benefit provided by this version 18 new feature:
Easily incline a control's content.

964 new feature W D W B W M

ROTATION EFFECT

This effect enables you to display an element by applying it a rotation of a given angle.

So it is possible for instance to display vertical text (90° or -90°), or in diagonal (45° or -45°).



Displaying "NEW" vertically and "PROMOTION" inclined, easily done: 1 click

Benefit provided by this version 18 new feature:
Easily incline one or more control.

ADVANCED EFFECT CUSTOMIZATION (TRANSFORMATION AND TRANSITION)

In addition to the automatic animation effects, the graphic artist or the web designer, can define effects himself. These are based on a geometric deformation of the control (rotation, sweep, change of scale, deformation, projection in perspective), or by transition effects (delay, time and acceleration curve).

Benefit provided by this version 18 new feature:
You can also create your own effect.



WLANGUAGE 75 NEW FUNCTIONS

WLANGUAGE: NEW SERVER FUNCTIONS

75 new WLanguage functions are being introduced in "server" mode:

OrganizerDisplay	OrganizerDisplayPreviousPeriod	OrganizerDisplayNextPeriod	OrganizerAddAppointment
OrganizerChangeMode	OrganizerTimeDisplayed	OrganizerListAppointment	OrganizerMode
OrganizerPosition	OrganizerSelectMinus	OrganizerSelectPlus	OrganizerDeleteAppointment
OrganizerDeleteAll	BufferToInteger	BufferToReal	StringInsert
ChronoReset	dbgError	DecimalToSexagesimal	SwapLine
InWinRTMode	ExtractLine	fAddBuffer	fAddText
ffind	gpwEnumControl	HDuplicateRecord	HNotifAddCCRecipient
HNotifAddEmailRecipient	HNotifConfigure	HNotifListCCRecipient	HNotifListEmailRecipient
HNotifDeleteCCRecipient	HNotifDeleteEmailRecipient	HRSAddConfig	HRSInit
HRSListConfig	HRSModifyConfig	HRSDeleteConfig	iPrintHTML
iPrintPDF	iPrintRTF	iPrintZoneHTML	FreeAWPContext
OpenSSLCheck	PropertyExist	NoRightCharacter	NoLeftCharacte
SexagesimalToDecimal	TableAddChild	ArraySwapLine	ArrayReverse
TableSeekChild	TableExpand	TableCollapse	TableItemStatus
TableInsertChild	TableGiveChild	TableGiveParent	TableDeleteChild
TableSortChild	TableTypeItem	TextToRTF	TimelineAddEvent
TimelineAddTrack	TimelineListEvent	TimelineDeleteEvent	TimelineDeleteAll
Truncate	UTF8ToAnsi	UTF8ToUnicode	

WLANGUAGE: NEW BROWSER FUNCTIONS

4 new WLanguage functions are added to the already available function in "browser" mode (Javascript):

ErrorBuild	InfoBuild	ToastDisplay	ToastDeleteAll
------------	-----------	--------------	----------------

DEPLOYMENT

FTPS SECURE INSTALLATION

In version 18, WEBDEV lets you deploy a site using the FTPS secure protocol (FTP over SSL). This protocol encrypts the data transfer for the installation on the host server.

Benefit provided by this version 18 new feature:
Increase your data's confidentiality.

PHYSICAL MEDIA INSTALLATION: CHOICE OF THE VIRTUAL SERVER

In version 18, the physical media installation lets you select the virtual server where to install the site.

Benefit provided by this version 18 new feature:
Deploy your site via physical media to any virtual server.

APPLICATION SERVER

NON BLOCKING PROCEDURE IN BACKGROUND TASK, INSTANT OR SCHEDULED

Let's imagine an eCommerce site. A customer places an order. The site continues to work, but now we need to send the invoice in FTP format via email to the customer, without blocking his navigation on the site: simply use the new "automatic scheduled pro-

cedure" new concept of WEBDEV 18. An automatic differed procedure is a project procedure that is executed in standalone mode, independently from the site. This procedure can be called:

- either by calling a site's process with the `ExecuteDelayedProcedure` fonction,
- or it can be scheduled from the code editor to run later and/or to be repeated.

This allows you to trigger processes in parallel to the site's execution.

Example: generate and send a .pdf file, send a confirmation email, consolidate data, purge a log, convert an image, ... without blocking the current site's session.



Benefit provided by this version 18 new feature:
The processes are not blocking anymore, easier programming.

AUTOMATIC IIS CONFIGURATION

In version 18, the WEBDEV setup (for either the editor or the Application server) automatically installs and configures the Windows Web IIS server. The development machine is instantly operational to test the sites created. For each "GO" on the project, WEBDEV checks the IIS configuration. If the IIS configuration is corrupted, WEBDEV automatically offers to repair this configuration. This automatic configuration is effective on Windows Vista and higher versions (IIS 7, IIS 8, ...).

Benefit provided by this version 18 new feature:
Rights are automatically assigned without any risk of error.

MANAGEMENT

SITES WITH THE SAME NAME ON DIFFERENT WEBDEV ACCOUNTS

In version 18, you can deploy several sites with the same name on different WEBDEV accounts but on the same host server. This evolution is especially useful for shared hosting.

Benefit provided by this version 18 new feature:
No more name conflicts on shared servers.

WEBDEV ACCOUNTS IN UNICODE

Version 18 of WebDev manages the WEBDEV accounts in Unicode format, this allows for hosting accounts from different languages on the same server.

Benefit provided by this version 18 new feature:
International shared hosting is easier.

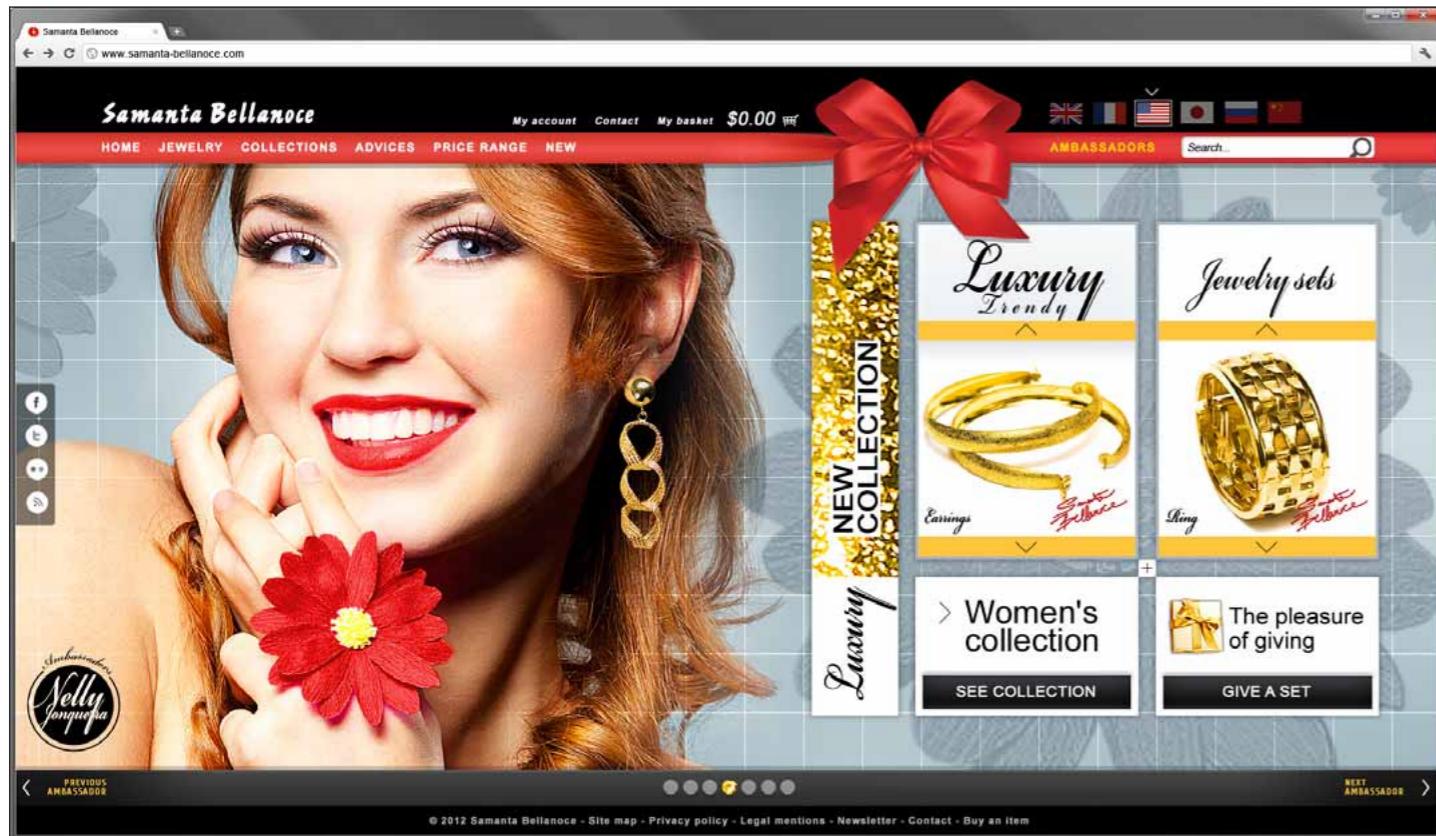
LOCAL AND REMOTE ADMINISTRATOR: NEW INTERFACE

The graphic interface for local and remote WEBDEV administrators evolves towards more clarity and simplicity.

Benefit provided by this version 18 new feature:
Administer your server with an intuitive interface.

AND MANY OTHER FEATURES

...And many other features, that you'll discover when you'll receive your version 18.



**TECHNOLOGY DOESN'T WAIT:
ORDER YOUR VERSION 18 TODAY**



Your code is unique: Windows, Internet, Linux, Mobile, Java, .Net, PHP, J2EE, Mac, Webservice, XML, Ajax, Android, iOS (iPhone), Windows Phone, Windows Mobile, Cloud,...

Order today! Version 18 has been announced. Some functions may not be available right away when the version is shipping, but will be offered later as downloads. Also note that additional improvements and new features other than the ones described in this document may be available in the new version. WINDEV, WEBDEV and WINDEV Mobile are professional software. Despite the care taken in creating this document, it is not contractual. The screen shots and lists are given for information purposes only. Don't hesitate to contact us if you need any additional information or to get confirmation of a feature. All the trademarks mentioned in this publication are registered trademarks of their respective owners.



WINDEV 18 WEBDEV 18 WINDEV Mobile 18 new features

I want it

**YOUR APPLICATIONS
ARE MORE EFFICIENT IN
VERSION 18**



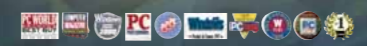
DEVELOP 10 TIMES FASTER

918 NEW FEATURES

TECHNOLOGY DOESN'T WAIT:
ORDER YOUR VERSION 18 TODAY



Your code is unique:
Windows, Internet, Linux,
Mobile, Java, .Net, PHP,
J2EE, Mac, Web service,
XML, Ajax, Android, iOS
(iPhone), Windows Phone,
Windows Mobile, Cloud,...



www.windev.com

